

# Migration Solutions



## PanelView™ Component Graphic Terminals to PanelView 800 Graphic Terminals

### Why Upgrade or Migrate

While PanelView Component graphic terminal has been a valuable part of our portfolio for the past eight years, this product is no longer available for sale after June 2018\* for PanelView Component C200 and C300 terminals. PanelView Component C400, C600 and C1000 terminals are discontinued and no longer available for sale.

Now is time to migrate to the newly launched series, PanelView 800 graphic terminals.

As the latest graphic terminals optimized for micro and small automation solutions, the PanelView 800 graphic terminals offer better performance and features to help improve your human machine interface design.

### PanelView 800 Graphic Terminal Features and Benefits

- Faster CPU processor speed
- Faster boot-up and screen-switching time
- Higher built-in memory (256MB)
- Higher resolution display with LED backlight and 65K color display
- Certification that is aligned with global standards, support hazardous locations and wider range of industrial applications (Class 1 Division 2 certified and IP65 NEMA 4X rated)
- Displays in landscape and portrait modes
- Enabled for remote monitoring via Virtual Network Computing (VNC) servers
- Connects to Micro800®, MicroLogix™ and CompactLogix™ 5370^ controllers

\*Discontinued date may be subject to change.

^CompactLogix 5370-L37 excluded



PanelView Component Graphic Terminals



PanelView 800 Graphic Terminals

### Identify, Mitigate and Eliminate the Risks of Automation Obsolescence

In today's economy, it is necessary to have migration solutions that help you to achieve increased productivity and lessen your risk of maintaining your legacy equipment. You need to work with a supplier that has the product, service, and industry knowledge to partner with you on an upgrade strategy that will help you maximize your competitive advantage.

Rockwell Automation and its partners will work with you to outline a plan that fits your application needs and long-term goals. We can help you migrate all at once or in phases, at the pace that is comfortable for you and fits your budget.

With your goals in mind, Rockwell Automation has developed a migration strategy that will allow you to quickly and easily migrate from PanelView Component graphic terminals to PanelView 800 graphic terminals. This approach will lower conversion time and engineering costs.

### Product Lifecycle

Use the [Product Lifecycle Status](#) search tool on the web to find specific lifecycle information by catalog number.



- **ACTIVE:** Most current offering within a product category.
- **ACTIVE MATURE:** Product is fully supported, but a newer product or family exists. Gain value by migrating.
- **END OF LIFE:** Discontinued date announced – actively execute migrations and last time buys. Product generally orderable until the discontinued date.<sup>1</sup>
- **DISCONTINUED:** New product no longer manufactured or procured.<sup>2</sup> Repair/exchange services may be available.

<sup>1</sup> - Outages on specific items may occur prior to the Discontinued date. <sup>2</sup> - Limited stock may be available in run-out mode, regionally.

LISTEN.  
THINK.  
SOLVE.®



Allen-Bradley • Rockwell Software

**Rockwell  
Automation**

## Recommended Migration

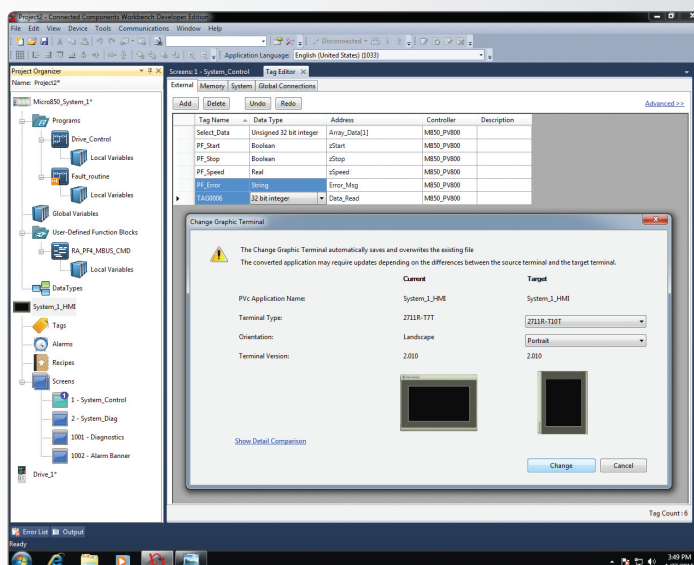
Existing PanelView Component Graphic Terminal	Recommended Migration to PanelView 800 Graphic Terminal	Accessories Needed
<b>2-inch and 3-inch PanelView Component C200 and C300 Graphic Terminal (Keypad)</b> Dimension: 119 x 139 x 55 Cutout Dimension: 100 x 120	<b>4-inch PanelView 800 Graphic Terminal (2711R-T4T)</b> Dimension: 116 x 138 x 43 Cutout Dimension: 99 x 119	Not Applicable
<b>2-inch and 3-inch PanelView Component C200 and C300 Graphic Terminal (Function Key and Touch)</b> C200 Function Key Dimension: 80 x 116 x 54 C300 Touch Dimension: 80 x 116 x 57 Cutout Dimension: 65 x 100		
<b>4-inch PanelView Component C400 Graphic Terminal</b> Dimension: 116 x 138 x 43 Cutout Dimension: 99 x 119		Not required
<b>6-inch PanelView Component C600 Graphic Terminal</b> Dimension: 154 x 209 x 57 Cutout Dimension: 135 x 189	<b>7-inch PanelView 800 Graphic Terminal (2711R-T7T)</b> Dimension: 144 x 197 x 54 Cutout Dimension: 125 x 179	Adapter plate kit 2711R-APK7
<b>10-inch PanelView Component C1000 Graphic Terminal</b> Dimension: 250 x 308 x 55 Cutout Dimension: 231 x 289	<b>10-inch PanelView 800 Graphic Terminal (2711R-T10T)</b> Dimension: 225 x 287 x 55 Cutout Dimension: 206 x 269	Adapter plate kit 2711R-APK10

Dimension (Height x Width x Depth) mm  
 Cutout Dimension (Height x Width) mm

## Connected Components Workbench™ Software

Change Graphic Terminal feature in DesignStation helps to facilitate application migration from PanelView Component to PanelView 800 graphic terminal.

Download [Connected Components Workbench Software](#).



## PanelView Component Graphic Terminals Compared to PanelView 800 Graphic Terminals

Feature	PanelView Component Graphic Terminals	PanelView 800 Graphic Terminals
Resolution	2 in. 122 x 32 / 3 in. 128 x 64 / 4 in. 480 x 272 / 6 in. 320 x 240 / 10 in. 640 x 480	4 in. 480 x 272 / 7 in. 800 x 480 / 10 in. 800 x 600
Colors	Monochrome and 256 colors	65K
Backlight	CCFL and LED	LED
Power Supply	24V DC	24V DC
Processor, CPU Speed	200 MHz	800 MHz
Internal Storage	64 MB	256 MB
RAM	64 MB	256 MB
Operation System	Microsoft Windows CE 5.0	Microsoft Windows CE 6.0
RS-232/RS-422/RS-485 (isolated)	RS-232 and RS-422/RS-485	RS-232 and RS-422/RS-485
Ethernet 10/100 Mbps	1	1
USB Host (USB 2.0)	Yes	Yes
SD™ Support	Yes, SD	Yes, microSD™
Certifications	cULus listed, CE, RoHS	cULus listed, Class 1 Div 2, Groups A,B,C,D, T4A, CE, RCM, KC, RoHS
Recipe	1 recipe file	50 recipe files
Graphics	Simple industrial symbols	Support industrial symbols
Portrait Mode	Landscape only	Landscape and portrait
Dimension and Aesthetics	Bigger dimension (integrated clamps)	Slimmer dimension

## Why Upgrade or Migrate

To better understand your options, contact your local authorized Allen-Bradley distributor or Rockwell Automation sales office or visit:

[www.rockwellautomation.com/go/lifecycle](http://www.rockwellautomation.com/go/lifecycle) and [www.rockwellautomation.com/go/migration](http://www.rockwellautomation.com/go/migration)

Allen-Bradley, Connected Components Workbench, Listen. Think. Solve., Micro800, MicroLogix, CompactLogix and PanelView are trademarks of Rockwell Automation, Inc. Trademarks not belonging to Rockwell Automation are property of their respective companies.

**[www.rockwellautomation.com](http://www.rockwellautomation.com)**

---

### Power, Control and Information Solutions Headquarters

Americas: Rockwell Automation, 1201 South Second Street, Milwaukee, WI 53204-2496 USA, Tel: (1) 414.382.2000, Fax: (1) 414.382.4444

Europe/Middle East/Africa: Rockwell Automation NV, Pegasus Park, De Kleetlaan 12a, 1831 Diegem, Belgium, Tel: (32) 2 663 0600, Fax: (32) 2 663 0640

Asia Pacific: Rockwell Automation, Level 14, Core F, Cyberport 3, 100 Cyberport Road, Hong Kong, Tel: (852) 2887 4788, Fax: (852) 2508 1846