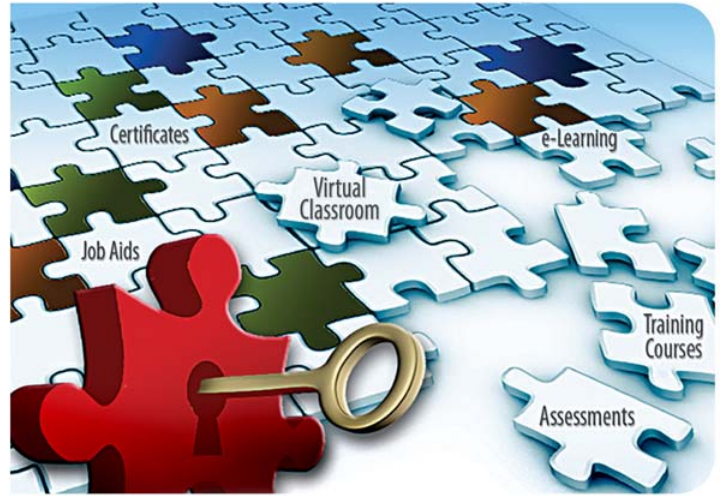
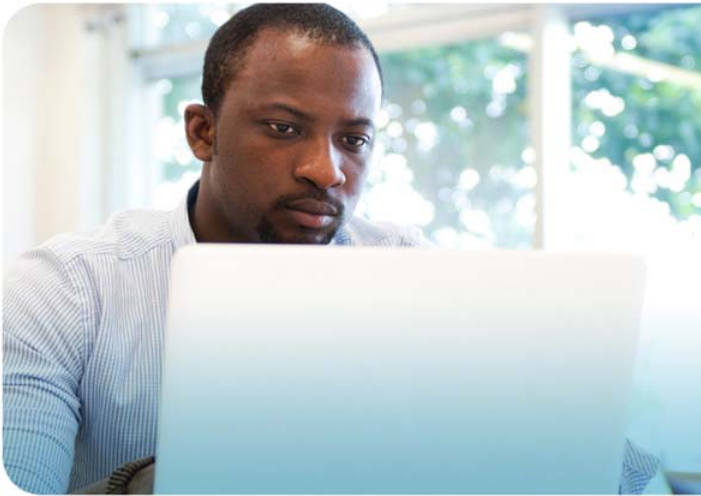


Virtual Classroom Course Description

Integrated Motion on EtherNet/IP: Configuration & Commissioning



Course Purpose

This course will teach you how to choose topology and components, configure controllers and axes, and add drives to your configuration. This course will also show you how to start up the network, test axes with motion direct commands, run hookup tests, and auto tune axes.

Course Number: VC-CCN300

Session 1: VC-CCN300-01

Integrated Motion on EtherNet/IP: Configuration

Session 2: VC-CCN300-02

Integrated Motion on EtherNet/IP: Commissioning

Sessions can be purchased separately or as a bundle using course number VC-CCN300.

Who Should Attend

Control engineers who design and develop motion control applications and who will be working with Integrated Motion on EtherNet/IP networks should attend this course.

Student Materials

You will receive the following materials, in electronic format, to print on your own and use during the course:

- Integrated Motion on EtherNet / IP Workbook
- Integrated Motion on EtherNet / IP Procedures Guide
- Popular Configuration Drawings

Hands-On Practice

During each session, your instructor will demonstrate how to perform tasks using RSLogix 5000 software and a hardware workstation. In the first session, you will practice tasks offline using RSLogix 5000 software. In the second session, you will take turns practicing tasks online by remotely sharing your instructor's software and hardware setup.

Prerequisites

Experience developing motion control applications and working with RSLogix 5000 software

Technology Requirements

- A computer and phone are required. For minimum computer requirements for the virtual classroom tool, please visit:

<http://support.webex.com/support/system-requirements.html>

- RSLogix 5000 software, version 19, must be installed and activated.

If you don't have RSLogix 5000 software, your virtual classroom invitation will provide details on how to obtain a temporary installation of the software.

LISTEN.
THINK.
SOLVE.

Next Learning Level

For instructor-led training related to integrated motion on EtherNet/IP networks, consider the following courses:

- CCP143 RSLogix 5000 Level 3: Project Development
- CCN142 RSLogix 5000 Level 4: Motion Programming Using Ladder Logic

Course Length

Session 1: 120 minutes

Session 2: 90 minutes

Virtual Classroom Learning Activities and Features

Rockwell Automation Virtual Classroom training is delivered by a live instructor using a blended learning style, which includes a combination of PowerPoint presentations, video, and/or animations, as well as interactive practice. Courses can include various learning activities and features:

- Polls/surveys
- Group and private chat
- White board
- Desktop sharing
- Passing control to students
- Break out rooms for small group discussion
- Check knowledge through testing



IACET CEUs

Session 1 = 0.20 CEUs

Session 2 = 0.15 CEUs

To Register

To register for this or any other Rockwell Automation training course, contact your local authorized Allen-Bradley Distributor or your local Sales/Support office for a complete listing of courses, descriptions, prices, and schedules.

COURSE AGENDA

Session 1: Integrated Motion on EtherNet/IP: Configuration (VC-CCN300-01)

- Choose topology and components
- Configure a controller for the network
- Add drives
- Configure axes

Session 2: Integrated Motion on EtherNet/IP: Commissioning (VC-CCN300-02)

- Start up the network
- Test axes with motion direct commands
- Run hookup tests
- Autotune axes

Trademark Copy. The trademark disclaimer must contain any trademarks of Rockwell Automation Inc. that were used /discussed in the piece.

www.rockwellautomation.com

Power, Control and Information Solutions Headquarters

Americas: Rockwell Automation, 1201 South Second Street, Milwaukee, WI 53204 USA, Tel: (1) 414.382.2000, Fax: (1) 414.382.4444

Europe/Middle East/Africa: Rockwell Automation, Vorstlaan/Boulevard du Souverain 36, 1170 Brussels, Belgium, Tel: (32) 2 663 0600, Fax: (32) 2 663 0640

Asia Pacific: Rockwell Automation, Level 14, Core F, Cyberport 3, 100 Cyberport Road, Hong Kong, Tel: (852) 2887 4788, Fax: (852) 2508 1846