

# RSTestStand™ Software

## RSTestStand™ Enterprise Project Development Course Description

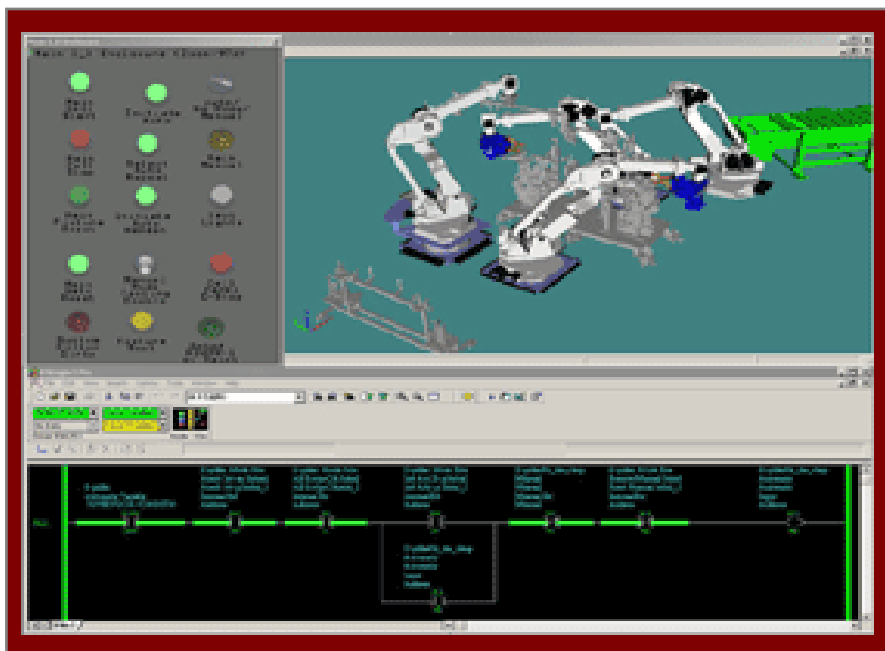
### COURSE AGENDA

#### Day 1

- Getting Started with RSTestStand software
- Creating a Project Model
- Creating and Modifying Resources
- Building Operator Consoles and Creating a Connection Diagram
- Simulating and Validating a Project Model

#### Day 2

- Creating Run-Time Scenarios
- Creating, Animating, and Controlling Scenes
- Creating and Running a Part Flow Model and Binding Actions to Resources
- Building Logical Views
- Troubleshooting and Tuning RSTestStand Enterprise Projects Using Productivity Tools



### COURSE NUMBER RS-RSTS101-LD

#### Course Purpose

This course provides engineers and programmers with a working knowledge of the RSTestStand Enterprise control systems simulation software. Upon completion of this course, engineers and programmers will gain the skills to create, validate, troubleshoot, and tune RSTestStand Enterprise Projects using RSTestStand simulation software.

This course also provides hands-on practices to reinforce the tasks involved in designing, testing, and implementing an effective simulation model of a machine and/or process. From creating and running project models and run-time scenarios to animating scenes and binding actions to resources, students will have the opportunity to fully understand the capabilities of RSTestStand Enterprise simulations and the benefits of this virtual modeling process with regard to start-up time, design flaw identification, problem resolution, and end-user training.

#### Who Should Attend

Controls engineers and programmers who are responsible for designing, starting up, installing, and troubleshooting automation control systems and equipment should attend this course.

LISTEN.  
THINK.  
SOLVE.™

### ***Prerequisites***

To successfully complete this course, the following prerequisites are required:

- Familiarity with Microsoft® Windows® user interface
- Basic understanding of PLC® processors or completion of the *PLC-5®/SLC™500 and RSLogix™ Fundamentals* course (CCP122)
- Knowledge of basic VB scripting concepts
- Familiarity with basic OPC and detailed understanding of RSLinx software is recommended

### ***Hands-On Practice***

Hands-on practice is necessary for building skills. Throughout this course, students will have the opportunity to practice the skills they learn through a variety of hands-on exercises. In specific, students will practice the following RSTestStand software tasks:

- Configure basic components of an RSTestStand project
- Analyze an application to develop a project model
- Add and modify resources to a project
- Build an operator console and check inputs and outputs to the simulated control system
- Test the RSTestStand project for error conditions and system responses
- Create unique run-time scenarios
- Add 3-D images to scenes and animate an object
- Develop a part flow model for feedback and part-in-place detection
- Create data scopes, traces, test scripts, etc. to troubleshoot and tune RSTestStand projects

### ***Student Materials***

To enhance and facilitate students' learning experience, the following materials are provided to each student as part of the course package:

- Student Manual, which contains the key concepts, definitions, and examples presented in the course and includes the hands-on exercises.

### ***Course Length***

This is a two-day course.

### ***Course Number***

The course number is RS-RSTS101-LD.

### ***To Register***

To register for this or any other Rockwell Automation training course, contact your local authorized Allen-Bradley Distributor or your local Sales/Support office for a complete listing of courses, descriptions, prices, and schedules.

You can also access course information via the Web at <http://www.rockwellautomation.com/training>

**[www.rockwellautomation.com](http://www.rockwellautomation.com)**

---

### **Power, Control and Information Solutions**

Americas: Rockwell Automation, 1201 South Second Street, Milwaukee, WI 53204-2496 USA, Tel: (1) 414.382.2000, Fax: (1) 414.382.4444

Europe/Middle East/Africa: Rockwell Automation SA/NV, Vorstlaan/Boulevard du Souverain 36, 1170 Brussels, Belgium, Tel: (32) 2 663 0600, Fax: (32) 2 663 0640

Asia Pacific: Rockwell Automation, Level 14, Core F, Cyberport 3, 100 Cyberport Road, Hong Kong, Tel: (852) 2887 4788, Fax: (852) 2508 1846