

SELF-PACED LESSONS

RSTrainer Introduction

- Course Introduction

Configuring Communications

- Identifying the Hardware
- Configuring RSLinx Communications Software
- Interactive Practice

Transferring an RSLogix 500 Project File

- Transferring an RSLogix 500 Project between a Computer and a Processor
- Using RSLogix Emulator 500 Software
- Interactive Practice

Editing Ladder Logic Online

- Editing Ladder Logic while Online with an RSLogix 500 Project

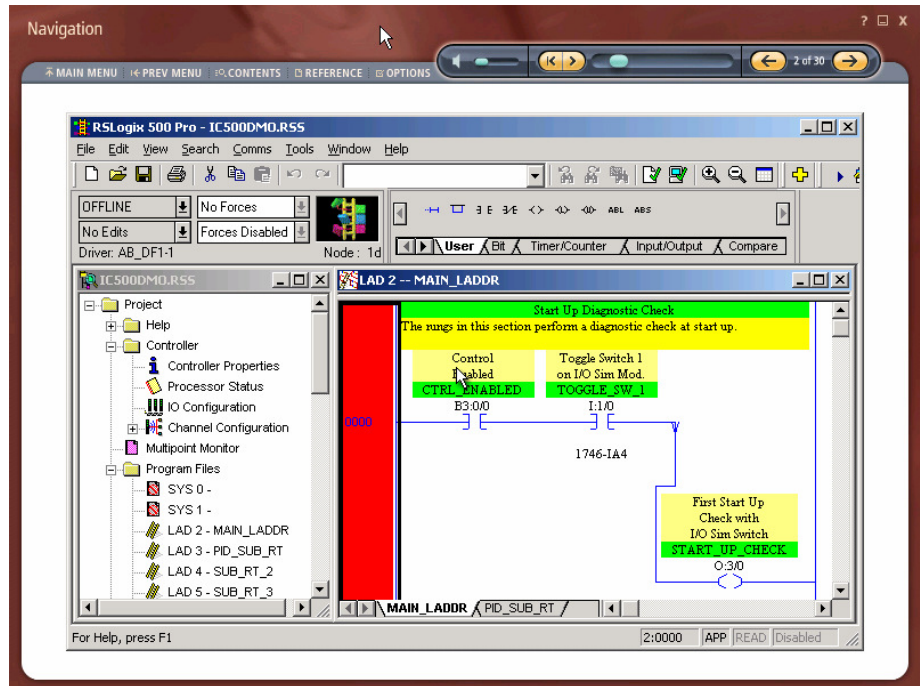
Data Monitoring

- Creating and Interpreting Data Table Monitors
- Creating and Configuring Trends and Histograms
- Using Workspace Manager
- Interactive Practice

Forcing Inputs and Outputs

- Forcing Inputs and Outputs

RSTrainer® for RSLogix 500 Software – Online Monitoring e-Learning Courses



Course Purpose

This interactive, self-based training course teaches you the core tasks required for communicating with and monitoring an online RSLogix 500 project. During this course, you will learn how to configure communication drivers and upload, download, and go online with an RSLogix 500 project. You will also learn how to go online and use RSLogix Emulator 500 software, which will allow you to test your project in a non-production environment. This course also covers how to enter ladder logic online and use a variety of data monitoring tools, such as histograms and trends.

Helpful animations, background information, and links to other reference materials provide you with a variety of knowledge and learning tools. These tools, combined with step-by-step demonstrations and interactivity, will provide you with the knowledge and skills required to perform each task. You will also have the opportunity to practice performing software tasks through interactive simulations. These simulations will guide you through the required steps and give you immediate feedback on your performance to reinforce learning.

You will also be given multiple opportunities to test your knowledge through question and answer sessions. These question and answer sessions will allow you to gauge your knowledge level and help you identify areas for improvement.

Intended Audience

These e-learning courses are intended for the following audiences:

- Individuals who prefer self-paced instruction
- Individuals who cannot attend classroom training
- Users of Rockwell Automation RSLogix 500 Software who need refresher training
- Individuals who need to configure and navigate through RSLogix 500 software
- Individuals interested in the features and capabilities of RSLogix 500 software

Prerequisites

To successfully complete this course, you should be able to perform basic Microsoft® Windows® tasks. Prerequisite knowledge of common processor and ladder logic terms and operation is suggested.

Web-Based or Computer-Based Training

Choose the training delivery method that best suits your needs:

- RA University Online web-based training is stored on a server and accessed across a network via the Internet. Web-based training permits unlimited usage for a single, licensed user.
- The RSTrainer computer-based CD-ROM format permits unlimited usage on a single, licensed computer. Computer-based training does not require an Internet connection; therefore, learning can take place anytime and anywhere a computer is available.

Learning Activities & Features

Rockwell Automation e-learning courses include the following features:

- Information overviews
- Discussions of basic principles and/or concepts
- Descriptive and detailed technical explanations
- Animated sequences
- Interactive and integrated practice exercises
- Interactive simulations
- Online help
- Index to locate specific course topics
- Embedded Adobe® Acrobat® PDF files of User Manuals and Installation Guides
- Links to useful reference material
- Glossary of terms

In addition, the RA University Online web-based training courses offer the following unique features:

- Pre- and post-testing
- Embedded learning management system
- Administrative features

To Purchase

To register for this or any other Rockwell Automation training course, contact your local authorized Allen-Bradley Distributor or your local Sales/Support office.

You can also access course information via the Web at <http://www.rockwellautomation.com/training>

Catalog Numbers

- RSTrainer for RSLogix 500 Software – Online Monitoring: **9393-RST500ONENE**
- RSTrainer Enterprise Edition for RSLogix 500 Software – Online Monitoring: **9393-RST500ONENF**
- Web-based RSLogix 500 Software – Online Monitoring ePass: **WBT1PACK** (equivalent to 1 course)

www.rockwellautomation.com

Power, Control and Information Solutions

Americas: Rockwell Automation, 1201 South Second Street, Milwaukee, WI 53204-2496 USA, Tel: (1) 414.382.2000, Fax: (1) 414.382.4444

Europe/Middle East/Africa: Rockwell Automation SA/NV, Vorstlaan/Boulevard du Souverain 36, 1170 Brussels, Belgium, Tel: (32) 2 663 0600, Fax: (32) 2 663 0640

Asia Pacific: Rockwell Automation, Level 14, Core F, Cyberport 3, 100 Cyberport Road, Hong Kong, Tel: (852) 2887 4788, Fax: (852) 2508 1846