

COURSE DESCRIPTION

FactoryTalk View Machine Edition – Drawing Objects

SELF-PACED LESSONS

RSTrainer Introduction

*Course Pre-Test**

Introducing Basic Graphic Objects

- Object Overview
- Drawing Objects
- Object Properties

Working with Basic Graphic Objects

- Arranging Objects
- Adding Objects from the Graphic Library
- The Object Explorer
- Animating Drawing Objects

Frequently Asked Questions

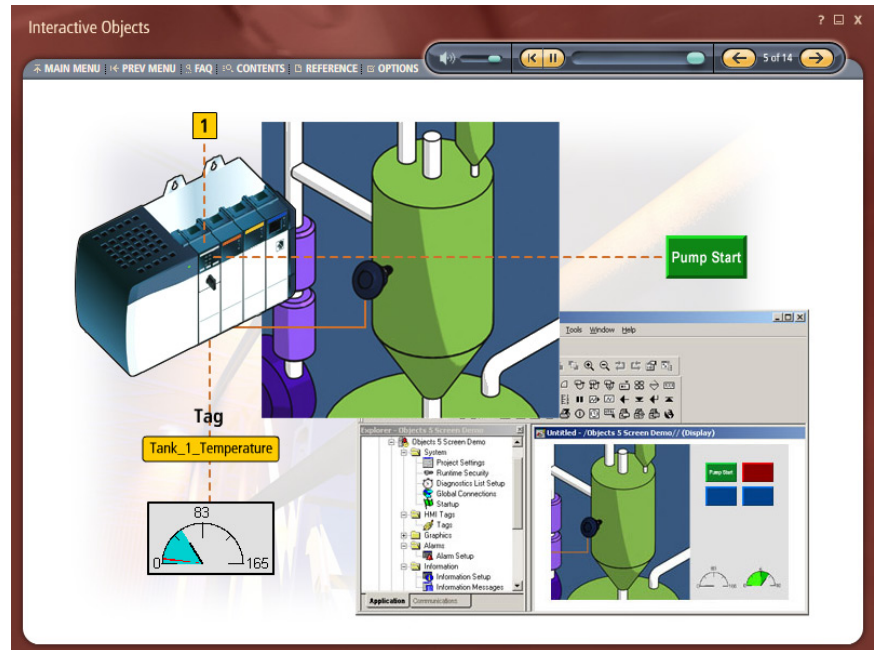
- Answers to the questions most frequently submitted to Rockwell Automation technical support presented using conceptual animations and software simulations

*Course Post-Test**

*Pre- and Post-Tests**

- * To access the pre- and post-tests, this course must be used with *RSTrainer Enterprise Edition Student Manager*.

RSTrainer® for FactoryTalk View Machine Edition – Drawing Objects



Course Purpose

This interactive, self-paced training course provides information about creating FactoryTalk View Machine Edition drawing objects in graphic displays. During the course, you will be introduced to a variety of basic graphic objects and learn how to modify their properties, animate them, and arrange them on the displays. You will also learn how to use objects from the Graphic Library.

Helpful animations, background information, answers to frequently asked questions, and links to other reference materials provide you with a variety of knowledge and learning tools. These tools will provide you with the knowledge required to use drawing objects in graphic displays.

You will also be given multiple opportunities to test your knowledge through question and answer sessions. These question and answer sessions allow you to gauge your knowledge level and help you identify areas for improvement.

COURSE DESCRIPTION

FactoryTalk View Machine Edition – Drawing Objects

Intended Audience

These e-learning courses are intended for the following audiences:

- Individuals who prefer self-paced instruction
- Individuals who cannot attend classroom training
- Individuals who are responsible for designing FactoryTalk View Machine Edition displays
- Individuals interested in learning about basic drawing objects

Prerequisites

To successfully complete this course, you should be able to perform basic Microsoft® Windows® tasks.

Learning Activities & Features

Rockwell Automation e-learning courses include the following features:

- Information overviews
- Discussions of basic principles and/or concepts
- Descriptive and detailed technical explanations
- Answers to the questions most frequently submitted to Rockwell Automation technical support
- Animated sequences and interactive simulations
- Interactive and integrated practice exercises
- Question and answer sessions
- Online help
- Index to locate specific course topics
- Embedded technical manuals
- Links to useful reference material
- Glossary of terms

In addition, the RA University Online web-based training courses offer the following unique features:

- Embedded learning management system
- Administrative features

Web-Based or Computer-Based Training

Choose the training delivery method that best suits your needs:

- RA University Online web-based training is stored on a server and accessed across a network via the Internet. Web-based training permits unlimited usage for a single, licensed user.
- The RSTrainer computer-based CD-ROM format permits unlimited usage on a single, licensed computer. Computer-based training does not require an Internet connection; therefore, learning can take place anytime and anywhere a computer is available.

To Purchase

To register for this or any other Rockwell Automation training course, contact your local authorized Allen-Bradley Distributor or your local Sales/Support office.

You can also access course information via the Web at <http://www.rockwellautomation.com/training>

Catalog Numbers

- *RSTrainer for FactoryTalk View Machine Edition – Drawing Objects: 9393-RSTVMEPT2*
- *RSTrainer Enterprise Edition for FactoryTalk View Machine Edition - Drawing Objects: 9393-RSTMEPT2ENF*
- *Web-based FactoryTalk View Machine Edition - Drawing Objects: ePass: WBT1PACK (equivalent to 1 course)*

www.rockwellautomation.com

Power, Control and Information Solutions

Americas: Rockwell Automation, 1201 South Second Street, Milwaukee, WI 53204-2496 USA, Tel: (1) 414.382.2000, Fax: (1) 414.382.4444

Europe/Middle East/Africa: Rockwell Automation SA/NV, Vorstlaan/Boulevard du Souverain 36, 1170 Brussels, Belgium, Tel: (32) 2 663 0600, Fax: (32) 2 663 0640

Asia Pacific: Rockwell Automation, Level 14, Core F, Cyberport 3, 100 Cyberport Road, Hong Kong, Tel: (852) 2887 4788, Fax: (852) 2508 1846