

# PRODUCT PROFILE

## RSTRAINER™ STUDENT MANAGER

### QUICKLY ACCESS YOUR EMPLOYEES' RESULTS

RSTrainer Student Manager can be used anywhere, so it offers you greater convenience and quick access to progress information and results for employees completing computer-based training courses. More importantly, it reduces the amount of time spent typically verifying your employees training!

RSTrainer Student Manager is ideal for individuals who:

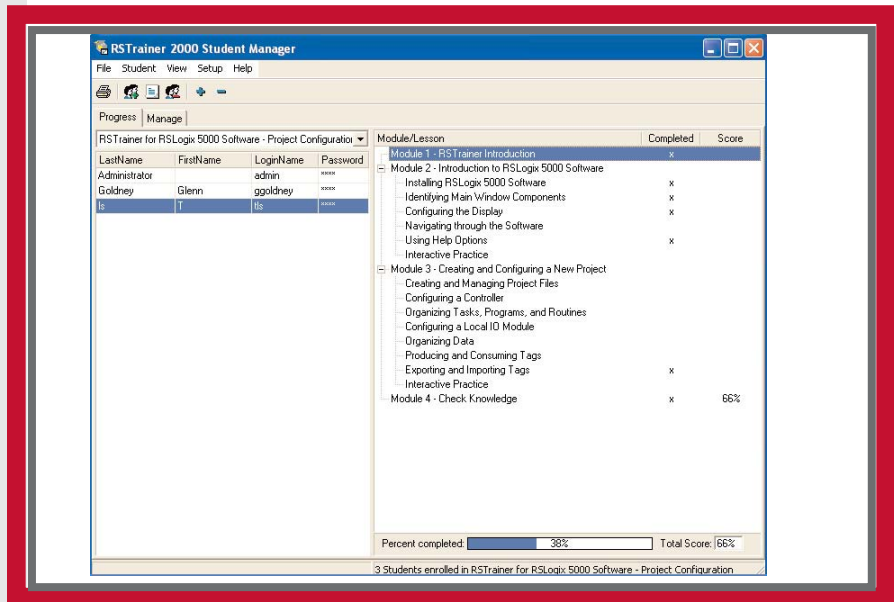
- Are responsible for tracking and managing daily progress of employees participating in an RSTrainer computer-based training course or courses
- Set up and manage an RSTrainer course(s)

### FEATURES AND FUNCTIONALITY

RSTrainer Student Manager includes the following features and capabilities:

- Navigational aids that allow you to change views between the Student Progress tab and the Manage courses tab to add and remove student and course data
- Reporting feature that allows you to print and preview an enrollment summary, student summary, or course summary
- Built-in wizards that walk you through setting up a course or student
- Online Help
- Quick access icons that allow you to easily enroll students, edit student information, or remove students from a course
- Screen views that show you student progress and course completion information, a listing of installed RSTrainer courses, and an overall student roster

## TRACKING MADE EASY FOR COMPUTER-BASED TRAINING



### *Is administering a corporate computer-based training program a daunting task?*

With RSTrainer Student Manager, we've got you covered! RSTrainer Student Manager is the learning management solution for use with Rockwell Automation's award-winning computer-based RSTrainer courses. Student Manager is designed for training administrators to effectively manage their RSTrainer courses, in addition to tracking and managing the daily progress of employees participating in an RSTrainer course or series of courses.

The RSTrainer Student Manager tracking and reporting utility provides you the capability to manage any number of RSTrainer courses and any number of students. For each student who has access to an RSTrainer course, RSTrainer Student Manager tracks the courses each student is assigned to, maintains a record of their progress, and gives you a view of their progression through each course. This view provides administrators with information on overall percentage of course completion, the specific lessons that have been viewed, and students' final scores on the Check Knowledge section of a course.

RSTrainer Student Manager is compatible with Rockwell Automation RSTrainer products and can be configured to run on a network server. Using this configuration, student data is managed via a network with RSTrainer courses that are installed locally on a personal computer. Or, RSTrainer Student Manager can be configured to run on a single standalone computer. Multiple configuration options give you the flexibility to track and manage your students from any location!

LISTEN. THINK. SOLVE.™

## COMPATABILITY

RSTrainer Student Manager is compatible with all RSTrainer products with the exception of:

- 9393-RSLX500 - *RSTrainer for RSLogix 500 Software* - Versions prior to 1.50.00 only

## SYSTEM REQUIREMENTS

RSTrainer Student Manager requires the following minimum system configuration:

- 233 MHz Pentium processor or above
- 64 MB RAM & 150 MB hard disk space
- CD-ROM drive & floppy disk drive
- SVGA graphics adapter (800x600)
- Sound card with speakers or headphones
- Windows 95®, Windows 98®, Windows NT 4.0®, or Windows 2000®



## PRICING AND ORDERING INFORMATION

### ***Catalog Numbers and Pricing***

To order, use the following catalog number:

- 9393-RSTSMGRENF - *RSTrainer Enterprise Edition Student Manager* (\$700)

### ***Ordering Information***

For ordering information or questions about Rockwell Automation training products, contact your local Rockwell Automation sales office or Allen-Bradley distributor.



### **For More Information**

For more information about Rockwell Automation Training Services go to [www.rockwellautomation.com/training](http://www.rockwellautomation.com/training). To learn which other Rockwell Automation Services & Support will be most beneficial to your maintenance strategy, contact your local Allen-Bradley distributor or Rockwell Automation sales office or go to [www.rockwellautomation.com/services](http://www.rockwellautomation.com/services).

**[www.rockwellautomation.com](http://www.rockwellautomation.com)**

### **Power, Control and Information Solutions Headquarters**

Americas: Rockwell Automation, 1201 South Second Street, Milwaukee, WI 53204-2496 USA, Tel: (1) 414.382.2000, Fax: (1) 414.382.4444

Europe/Middle East/Africa: Rockwell Automation, Vorstlaan/Boulevard du Souverain 36, 1170 Brussels, Belgium, Tel: (32) 2 663 0600, Fax: (32) 2 663 0640

Asia Pacific: Rockwell Automation, Level 14, Core F, Cyberport 3, 100 Cyberport Road, Hong Kong, Tel: (852) 2887 4788, Fax: (852) 2508 1846