

### SELF-PACED LESSONS

#### *RSTrainer Introduction*

- Course Introduction

#### *Navigating through RSLogix 500 Software*

- Configuring the display
- Navigating through the Menus, Ladder View, and Project View
- Using Help Options
- Interactive Practice

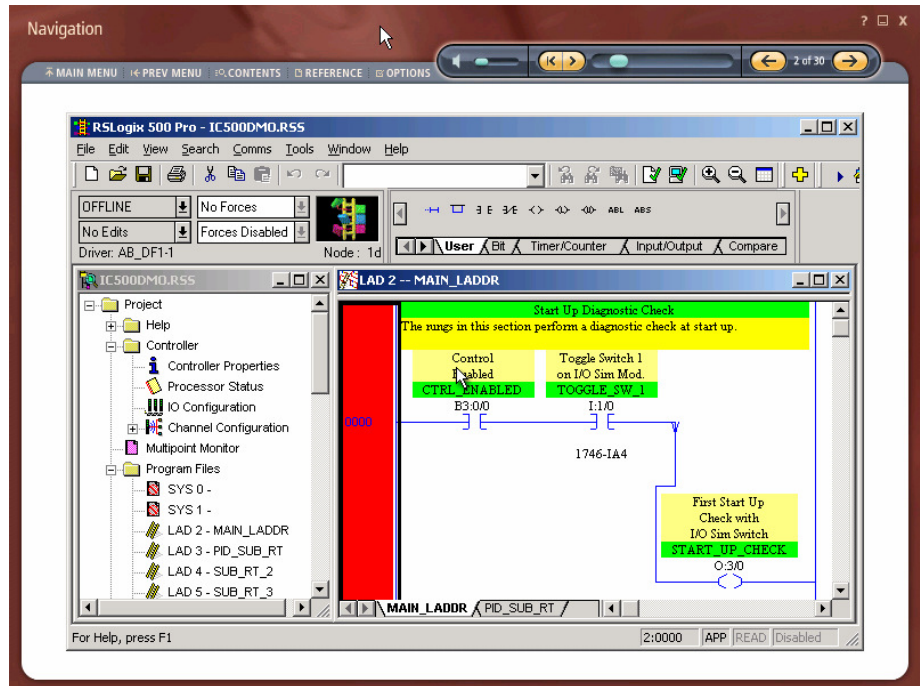
#### *Creating and Configuring a New RSLogix 500 Project*

- Creating a New Project
- Configuring I/O Modules in an RSLogix 500 Project
- Creating Program and Data Files
- Interactive Practice

#### *Entering Ladder Logic in an RSLogix 500 Project*

- Entering Ladder Logic
- Assigning Addresses to Ladder Logic
- Verifying a Project
- Copying, Pasting and Moving Rungs
- Editing with .SLC Library Files
- Interactive Practice

## RSTrainer® for RSLogix 500 Software - Offline Programming e-Learning Courses



#### *Course Purpose*

This interactive, self-based training course teaches you the core tasks required for programming an RSLogix 500 project offline. During this course, you will learn how to create and navigate through an RSLogix 500 project, configure I/O modules, and create program and data files. You will also learn how to enter ladder logic using a variety of methods and verify a project so it will be ready to download.

Helpful animations, background information, and links to other reference materials provide you with a variety of knowledge and learning tools. These tools, combined with step-by-step demonstrations and interactivity, will provide you with the knowledge and skills required to perform each task. You will also have the opportunity to practice performing software tasks through interactive simulations. These simulations will guide you through the required steps and give you immediate feedback on your performance to reinforce learning.

You will also be given multiple opportunities to test your knowledge through question and answer sessions. These question and answer sessions will allow you to gauge your knowledge level and help you identify areas for improvement.

### ***Intended Audience***

These e-learning courses are intended for the following audiences:

- Individuals who prefer self-paced instruction
- Individuals who cannot attend classroom training
- Users of Rockwell Automation RSLogix 500 Software who need refresher training
- Individuals who need to configure and navigate through RSLogix 500 software
- Individuals interested in the features and capabilities of RSLogix 500 software

### ***Prerequisites***

To successfully complete this course, you should be able to perform basic Microsoft® Windows® tasks. Prerequisite knowledge of common processor and ladder logic terms and operation is suggested.

### ***Web-Based or Computer-Based Training***

Choose the training delivery method that best suits your needs:

- RA University Online web-based training is stored on a server and accessed across a network via the Internet. Web-based training permits unlimited usage for a single, licensed user.
- The RSTrainer computer-based CD-ROM format permits unlimited usage on a single, licensed computer. Computer-based training does not require an Internet connection; therefore, learning can take place anytime and anywhere a computer is available.

### ***Learning Activities & Features***

Rockwell Automation e-learning courses include the following features:

- Information overviews
- Discussions of basic principles and/or concepts
- Descriptive and detailed technical explanations
- Animated sequences
- Interactive and integrated practice exercises

### ***Learning Activities & Features (cont'd)***

- Interactive simulations
- Online help
- Index to locate specific course topics
- Embedded Adobe® Acrobat® PDF files of User Manuals and Installation Guides
- Links to useful reference material
- Glossary of terms

In addition, the RA University Online web-based training courses offer the following unique features:

- Pre- and post-testing
- Embedded learning management system
- Administrative features

### ***To Purchase***

To register for this or any other Rockwell Automation training course, contact your local authorized Allen-Bradley Distributor or your local Sales/Support office.

You can also access course information via the Web at <http://www.rockwellautomation.com/training>

### ***Catalog Numbers***

- RSTrainer for RSLogix 500 Software – Offline Programming: **9393-RST500OFENE**
- RSTrainer Enterprise Edition for RSLogix 500 Software – Offline Programming: **9393-RST500OFENF**
- **Spanish** RSTrainer for RSLogix 500 Software – Offline Programming: **9393-RST500OFESE**
- **Spanish** RSTrainer Enterprise Edition for RSLogix 500 Software – Offline Programming: **9393-RST500OFESF**
- Web-based RSLogix 500 Software – Offline Programming ePass: **WBT1PACK** (equivalent to 1 course)

**[www.rockwellautomation.com](http://www.rockwellautomation.com)**

---

### **Power, Control and Information Solutions**

Americas: Rockwell Automation, 1201 South Second Street, Milwaukee, WI 53204-2496 USA, Tel: (1) 414.382.2000, Fax: (1) 414.382.4444

Europe/Middle East/Africa: Rockwell Automation SA/NV, Vorstlaan/Boulevard du Souverain 36, 1170 Brussels, Belgium, Tel: (32) 2 663 0600, Fax: (32) 2 663 0640

Asia Pacific: Rockwell Automation, Level 14, Core F, Cyberport 3, 100 Cyberport Road, Hong Kong, Tel: (852) 2887 4788, Fax: (852) 2508 1846