

# COURSE DESCRIPTION

## Logix5000™ Controllers

### RSTrainer® for ControlLogix® Fundamentals

#### SELF-PACED LESSONS

##### *RSTrainer Introduction*

- ControlLogix Overview
- RSLogix™ 5000 Overview

##### *Hardware*

- Chassis and Power Supplies
- Controllers
- I/O Modules
- Communications Modules
- Motion Modules

##### *Module Configuration*

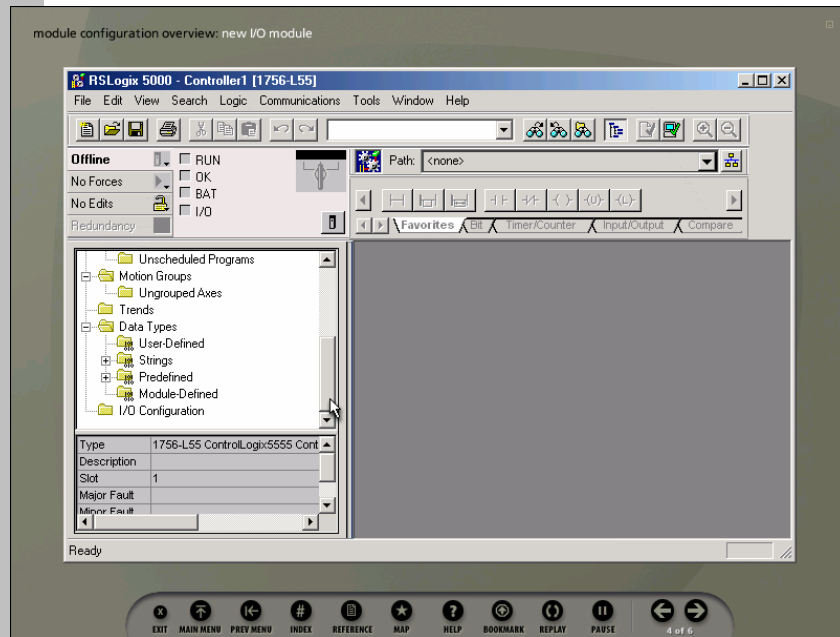
- Connections
- Configuring a Module

##### *Tag Structures*

- Digital
- Analog
- DeviceNet™
- DH/RIO

##### *Programming Overview*

- Project File Overview
- Numbering Systems
- Programming Languages



#### *Course Purpose*

This interactive, computer-based training course teaches you the core tasks required when working with a ControlLogix control system. This course provides an overview of the Logix5550®, Logix5555®, and Logix5563® controllers, I/O modules, communications modules, and motion modules.

During the course, you will learn how to navigate through RSLogix™ 5000 software and learn about the four RSLogix 5000 programming languages. Through the step-by-step demonstrations, you will learn about the various settings and options in the software and see how to perform the required tasks for example control applications.

Helpful animations, background information, and links to other reference materials provide you with a variety of knowledge and learning tools. These tools, combined with the step-by-step demonstrations, will provide you with the knowledge and skills required to perform task. You will also have the opportunity to practice performing software tasks through interactive simulations. These simulations will guide you through the required steps and give you immediate feedback on your performance to reinforce learning.

You will also be given multiple opportunities to test your knowledge through question and answer sessions. These question and answer sessions will allow you to gauge your knowledge level and help you identify areas for improvement.

# COURSE DESCRIPTION

## Logix5000™ Controllers

### ***Intended Audience***

This RSTrainer course is intended for the following audiences:

- Individuals who prefer self-paced instruction
- Individuals who cannot attend classroom training
- Users of the Rockwell Automation ControlLogix family of programmable controllers who need refresher training
- Individuals interested in the features and capabilities of the Rockwell Automation ControlLogix family of programmable controllers and RSLogix 5000 software

### ***Learning Activities & Features***

RSTrainer courses include the following features:

- Information overviews
- Discussions of basic principles and/or concepts
- Descriptive and detailed technical explanations
- Animated sequences
- Interactive and integrated practice exercises
- Interactive simulations
- Online help
- Index to locate specific course topics
- Embedded Adobe® Acrobat® PDF files of technical manuals
- Links to useful reference material
- Glossary of terms

### ***Prerequisites***

To successfully complete this course, you should be able to perform basic Microsoft® Windows® tasks.

### ***To Purchase***

To register for this or any other Rockwell Automation training course, contact your local authorized Allen-Bradley Distributor or your local Sales/Support office.

You can also access course information via the Web at <http://www.rockwellautomation.com/services>

### ***Catalog Numbers***

- *RSTrainer for ControlLogix Fundamentals:*  
**9393-RSTCLX.**

**[www.rockwellautomation.com](http://www.rockwellautomation.com)**

---

### **Power, Control and Information Solutions**

Americas: Rockwell Automation, 1201 South Second Street, Milwaukee, WI 53204-2496 USA, Tel: (1) 414.382.2000, Fax: (1) 414.382.4444

Europe/Middle East/Africa: Rockwell Automation SA/NV, Vorstlaan/Boulevard du Souverain 36, 1170 Brussels, Belgium, Tel: (32) 2 663 0600, Fax: (32) 2 663 0640

Asia Pacific: Rockwell Automation, Level 14, Core F, Cyberport 3, 100 Cyberport Road, Hong Kong, Tel: (852) 2887 4788, Fax: (852) 2508 1846