

PRODUCT PROFILE

PremierSystems Suite

Monitor, control, diagnose, and trend your coordinated control systems with the new HMI interface tool from Global Drive Systems

For any application where users need to interface with the controls, Global Drive Systems brings their experience and high level of application understanding to provide you with the most robust pre-engineered HMI solution in today's market place—PremierSystems Suite.

Designed for easy implementation into your process, PremierSystems Suite allows you to monitor, control, diagnose and trend your applications systems via a robust operator interface. This flexible HMI solution leverages Rockwell Automation technologies to provide a single comprehensive package to meet all of your drive system visualization needs.

Leveraging Global Drive Systems experience and knowledge PremierSystems Suite has been designed to be applied to almost any application in a wide range of industries from pulp and paper, metals, crane and hoist, oil and gas, converting and transportation to test stands, winders and OEM converting machines.

- *PremierSystems Suite provides drive-focused monitoring and control as part of a total HMI system.*
- *Powerful diagnostics enable extensive troubleshooting to be performed right at the HMI.*
- *Pre-defined navigation on displays and banners are maintained across the top of all displays.*
- *PremierSystems Suite contains templates of standardized graphics.*
- *PremierSystems Suite consists of pre-engineered applications, yet can also be customized.*
- *High speed data acquisition options for real time data.*



Pre-Engineered Solutions Increases Productivity

PremierSystems Suite builds on the capabilities of FactoryTalk View (RSView) and delivers to you a fully engineered and functional HMI solution. Reduce time in training and operator learning of new HMI systems with a consistent operator interface throughout your plant. Troubleshooting time can also be reduced by allowing you to get to the source of a problem with extensive diagnostics and easy access to system and hardware documentation

Standard User Interface Design Yield Consistency

By using an intuitive screen template, users can easily navigate through the PremierSystems Suite where each function screen presents the same window allowing consistent information across functions.

Common Platform Delivers Information

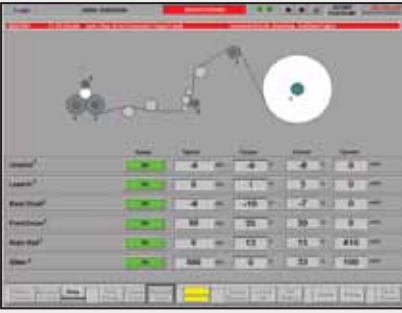
One of the most important links you can have in your system is the link to information. This common platform provides you with consistency between monitor points whether located on your machine or in your control room.

Robust Diagnostics Yield Productivity

Designed to keep your system operating the PremierSystems Suite allows for quick system diagnose and solutions.

Built-in diagnostic capabilities reduce troubleshooting with system hardware documentation and drawings linked to fault and alarm diagnostics.

Monitor



Control



Diagnose



Data Acquisition & Trending



Built on Rockwell Automation Technologies for:

- *Standardized controls*
- *Easy navigation and help*
- *Drives centric monitor and control*
- *System and subsystem screens*
- *Machine permissive and diagnostics*

Monitor

Provides the operator with direct access to key and critical operating conditions of each drive or machine in the process.

Operators can monitor operating characteristics and receive diagnostic information via a set of specific drive diagnostic fault and alarm screens.

- Direct access to all drive controls allow easy monitoring of actual conditions and status
- Monitor machine and drive section conditions
- Drive running status and conditions
- Dynamic and historical faults and alarms

Control

The control screen allows you to control your entire process from the “top floor” or scale down to control a single section of your machine. Operators can set control variables such as speed, torque or stop/start commands.

- Visualization and methods for collecting and transforming and integrating production actions
- Manage line speed, material requirements and key control functions
- Event process or master data collection and storage (data logging)
- High level systems and sub systems controls

Diagnose

Provides the user with a variety of means to thoroughly explore, troubleshoot and diagnose problematic conditions in the control system. Unique to this system are the interlock/permissive screens intended to guide the user through the signals that may be preventing a section of the machine from operating. Fault screens and summaries are also integrated into this section. Drive specific fault screens contain hotlinks to drive operating manuals along with a notepad so operators can take notes for corrective action.

- Analyze machine, production, and line conditions
- Easy diagnose drill down to troubleshooting guidelines
- Available event handling
- Robust permissive controls and diagnostics
- Line stop conditions and diagnostics
- Hot links to system schematics products manuals and ControlLogix ladder logic for permissive
- Standardize navigation for easy operator actions

Data Acquisition & Trending

In order to make critical operating decisions control system operators require operational feedback in a timely and understandable manner. The PremierSystems Suite HMI provides powerful data logging of system variables, parameters, for analysis of operating conditions. This built in feature provides a trend application allowing data and variable graphical analysis which will soon become the core analysis process for any system condition or process dynamic.

Optional high speed data logging at 1000 tags/10msec, allows users to monitor real time data as well as provide the historical trending analysis using RSTrend.

- Ensure operational processes and procedures meet standards or specifications
- Automated and manual data collection
- Core data logging or high speed data options
- Off the shelf Rockwell Automation/FactoryTalk applications
- Trend and trend analysis
- Enhance product and process consistency





Engineered Solutions

PremierSystems Suite is only available as part of an engineered solution provided by Rockwell Automation Global Drive Systems. Committed to providing you with the highest quality with local expertise, manufacturing and support, our engineers work with your team to design and implement the most effective HMI solution.

Unmatched Application Expertise

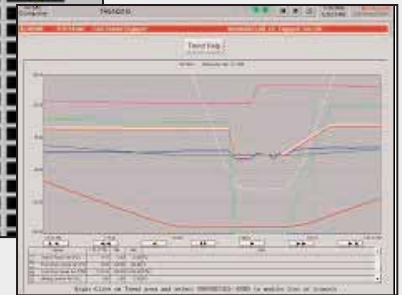
For over 50 years Global Drive Systems personnel have been applying HMI control solutions to applications from the simple to very complex. Our highly trained and experienced systems and control engineers can design and implement human machine interface controls to specifically meet your demanding processes and machine system needs.



Paper and Paper Processing

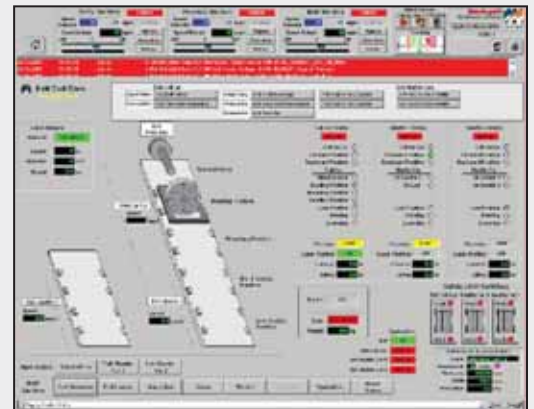
Global Drive Systems is a leader in the pulp and paper industry offering comprehensive paper machine based AC technology. We bring that experience to the operator by bringing advanced controls specifically designed and tailored for the paper technology process.

Station	Direction	Control	Speed	Yards	Minutes	Waste	Peak
1st Drive	SEMI	0.00	0.00	0.00	0.00	0.00	0.00
2nd Drive	SEMI	0.00	0.00	0.00	0.00	0.00	0.00
3rd Drive	SEMI	0.00	0.00	0.00	0.00	0.00	0.00
4th Drive	SEMI	0.00	0.00	0.00	0.00	0.00	0.00
5th Drive	SEMI	0.00	0.00	0.00	0.00	0.00	0.00
6th Drive	SEMI	0.00	0.00	0.00	0.00	0.00	0.00
7th Drive	SEMI	0.00	0.00	0.00	0.00	0.00	0.00
8th Drive	SEMI	0.00	0.00	0.00	0.00	0.00	0.00
9th Drive	SEMI	0.00	0.00	0.00	0.00	0.00	0.00
10th Drive	SEMI	0.00	0.00	0.00	0.00	0.00	0.00
11th Drive	SEMI	0.00	0.00	0.00	0.00	0.00	0.00
12th Drive	SEMI	0.00	0.00	0.00	0.00 </tr		



Metals

Regardless of your metals application, Global Drive Systems has the experience to offer metals processing, extruding, rolling and material preparation for all core metal compositions.



PremierSystems Suite Offerings

Three levels of functionality are available:

Core

The Core set contains the full complement of displays for a complete HMI system. It includes monitoring, control, diagnostics, faults, alarms, data logging, and trending.

Semi-Custom Option

The “Semi-Custom” option uses the Core set of standard displays, yet customizes them to meet individual customer requirements.

Full Custom

Additionally, custom displays are provided as an “Engineered To Order” (ETO) option.

PremierSystems Suite Platforms

PremierSystems can be applied across three topologies:

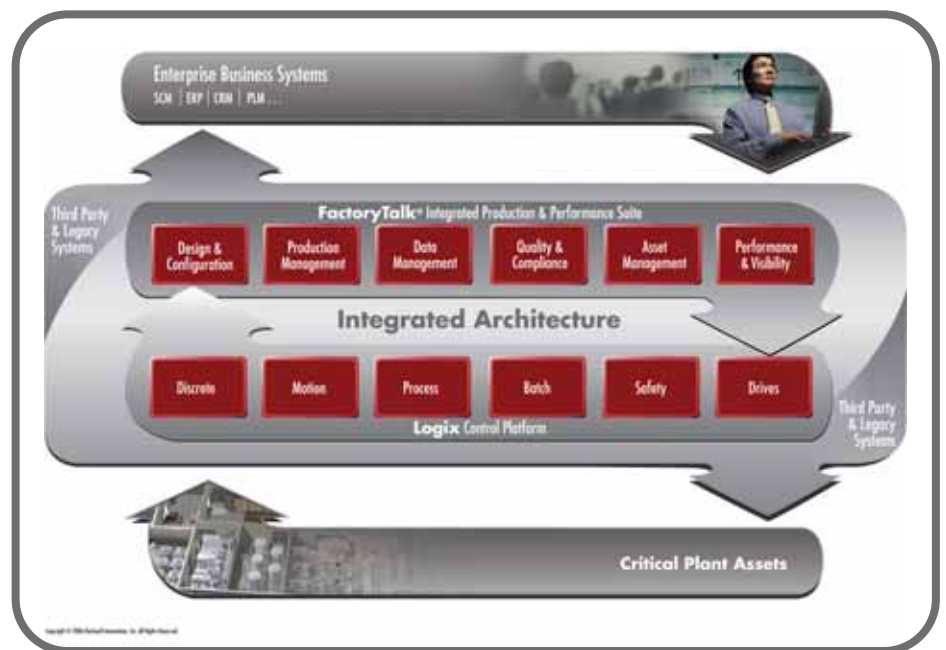
- **Machine-based** solution that uses a local Operator Interface, such as FactoryTalk Machine Edition (RSView ME) on a PanelView Plus or VersaView CE unit
- **PC-based** solution that provides centralized control, such as FactoryTalk View ME or FactoryTalk View Supervisory Edition (RSView ME or SE)
- A **distributed client-server** configuration for larger scale applications, or a system with remote connections between client and server, such as FactoryTalk View SE (RSView SE).

Control and Information Across Your Enterprise

Whatever your application, we can help you improve productivity and reduce costs. The Rockwell Automation Integrated Architecture™ provides unparalleled functionality, flexibility and scalability. Using sophisticated control, networking, visualization and information technologies, the Integrated Architecture helps you reduce development time and cost, respond more quickly to customer or market demands, reduce maintenance costs and downtime – and easily access actionable plant and production information to improve management and decision-making.

Unlike conventional architectures, the Integrated Architecture provides you with a fully integrated, scalable solution for the complete range of automation disciplines including discrete, motion, process, batch, safety and drive applications through a single control platform. The Logix control platform provides this functionality using a single development environment and a single, open communication protocol.

The Integrated Architecture also addresses your plant information needs with the FactoryTalk™ production and performance software suite. This software suite provides control and information functionality including design and configuration, production



management, data management, quality and compliance, asset management and performance and visibility.

By emphasizing third party connectivity, interoperability and use of today's open industry standards, the Integrated Architecture provides seamless integration with the rest of your site or enterprise.

www.rockwellautomation.com

Power, Control and Information Solutions Headquarters

Americas: Rockwell Automation, 1201 South Second Street, Milwaukee, WI 53204-2496 USA, Tel: (1) 414.382.2000, Fax: (1) 414.382.4444

Europe/Middle East/Africa: Rockwell Automation, Vorstlaan/Boulevard du Souverain 36, 1170 Brussels, Belgium, Tel: (32) 2 663 0600, Fax: (32) 2 663 0640

Asia Pacific: Rockwell Automation, Level 14, Core F, Cyberport 3, 100 Cyberport Road, Hong Kong, Tel: (852) 2887 4788, Fax: (852) 2508 1846