

RSLogix™ Architect

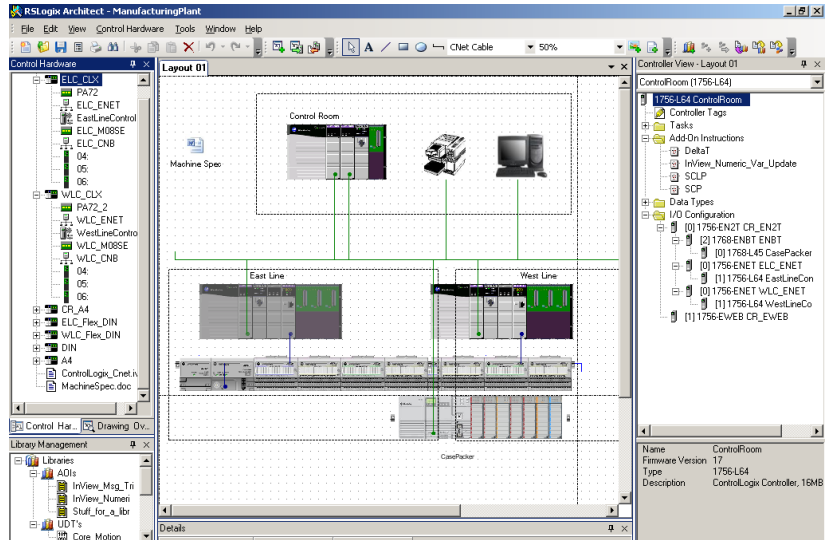
Efficient Management of Controller Configurations

Advantages

- Faster controller configuration
- Ease of troubleshooting
- Central storage of controller code
- Reduced time to manage multiple controller projects
- Faster configuration of produced and consumed tags

If you're like most users, the drawings of your automation system networks are out of date or lost among multiple revisions. So using them to make changes or locate problems is often hit or miss. What if there was a way to associate the latest network drawing with control and communication configurations?

Now there is RSLogix™ Architect software.



RSLogix™ Architect

Overview

Take a larger view of your Rockwell Automation Integrated Architecture™ with RSLogix™ Architect software. The RSLogix Architect package allows you to configure your control system through visual layouts. Then, using the power of Integrated Architecture and RSLogix™ 5000, RSLogix Architect software integrates your layouts with configured RSLogix 5000 projects.

With the RSLogix Architect package, you create drawings called Control Hardware Layout pages. These layout pages are where you “draw” your control hardware layout — the chassis, controllers, I/O and communication modules that you will use in your automation system. You can also draw network trunks that allow you to connect communication modules.

Control Hardware Layout pages allow you to set up communications for your automation system visually. Through a simple drag-and-drop mechanism, you move control hardware to a Control Hardware Layout page. Through layout pages, it becomes simple to define a communications network, I/O aliasing and configuration and even to define producer/consumer tag relationships between controllers. Utilizing the Library Management capability, you can drag and drop

LISTEN.
THINK.
SOLVE.™

reusable pieces of code from one controller to the next.

RSLogix Architect is designed to be simple to use and easy to deploy.

It offers you tools for:

- Managing controller configurations
- Viewing the system as a whole, instead of a collection of configuration files
- Library management of Add On Instructions (AOI's) and user-defined tags (UDT's)
- Global controller search
- Communications and network management
- Produced and consumed tag management
- I/O configuration and tag aliasing

Benefits

Faster controller configuration

Your current system requires you to manually ensure proper configuration in multiple project files. RSLogix Architect software allows you to configure communications for your controllers from one location.

Ease of troubleshooting

With the RSLogix Architect package, you can also manage your controller projects from one location. Finding a file is as easy as double-clicking on a drawing. You can also perform a global text search on all of the controllers in your system, making it easier to find where a tag is located and used.

Central storage of controller code

The library management capability provides one central place to store

AOI's and UDT's, enabling greater code reuse and cross-project consistency.

Reduced time to manage multiple controller projects

With faster communication configuration, project file management and a living drawing, you can eliminate time spent finding project files and time wasted working from outdated drawings.

Faster configuration of produced and consumed tags
RSLogix Architect software gives you one location to create and manage produced and consumed tags, eliminating the need to switch between controller projects to do creation.

Features

- Full Logix5000™ system layout
- Library management of AOI's and UDT's
- Creation of projects for existing systems
- Global controller search
- Launch appropriate editing tools with context
 - RSLogix 5000
 - RSNetWorx™ for ControlNet™
 - Third-party tools
- Produced/consumed tag relationship management
 - One location instead of individual controller configuration files
- Custom file type and graphics support
 - For any files not natively handled by RSLogix Architect

- System level produced/consumed tag report
 - Can be exported to .doc, .rtf, .csv and .pdf
- Support Factory Talk Security

Hardware Requirements

- 600MHz or greater Intel Pentium® II, or Pentium-compatible microprocessor (1GHz or greater recommended)
- 256 MB of RAM (512 MB or more recommended)
- CD-ROM drive
- 250 MB of free hard disk space (or more depending on application requirements)

Catalog Numbers

RSLogix Architect is bundled with RSLogix 5000 Professional or can be purchased stand alone.

9326-LGXARCHENE – RSLogix Architect

9324-RLD700NXENE – RSLogix 5000 Professional

Logix5000, RSLogix Architect, RSLogix 5000, and RSNetWorx for ControlNet are trademarks of Rockwell Automation, Inc. All other trademarks and registered trademarks are the property of their respective companies.

www.rockwellautomation.com

Power, Control and Information Solutions Headquarters

Americas: Rockwell Automation, 1201 South Second Street, Milwaukee, WI 53204 USA, Tel: (1) 414.382.2000, Fax: (1) 414.382.4444

Europe/Middle East/Africa: Rockwell Automation, Vorstlaan/Boulevard du Souverain 36, 1170 Brussels, Belgium, Tel: (32) 2 663 0600, Fax: (32) 2 663 0640

Asia Pacific: Rockwell Automation, Level 14, Core F, Cyberport 3, 100 Cyberport Road, Hong Kong, Tel: (852) 2887 4788, Fax: (852) 2508 1846