

PRODUCT PROFILE

POCKET DRIVEEXPLORER™ FOR POCKET PC

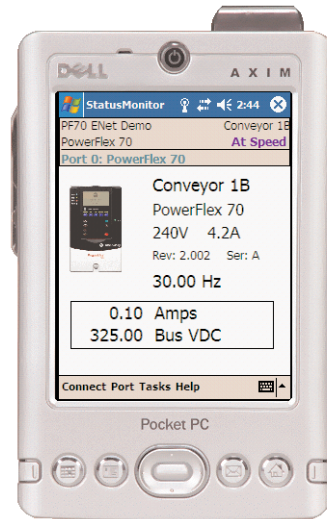
DRIVE SOFTWARE FOR MOBILE USERS

Pocket DriveExplorer for Pocket PC software allows Pocket PC devices, such as Dell Axim's and HP iPAQ's, to be used to program and maintain Allen-Bradley drives. Serial, Wi-Fi® and Bluetooth® wireless technology connectivity options, and DriveExplorer features provide versatility and high functionality in a portable PDA platform.

Pocket DriveExplorer comes on a CD (9306-4XP01ENE) containing both Pocket PC and Windows CE versions.

Product Highlights

- Status Monitor - Displays important device information and status (see picture), such as:
 - An image of the device
 - Device user text
 - Device name, product type, firmware revision, and series
 - Device status
 - Output frequency (Host only)
 - Two user selectable Process Display parameters (Host only)
- Parameter List Editor - Use a linear list to view and change parameters
- File & Group Display Editor - Grouped parameter access using File & Group folder views
- Upload / Download - Store and retrieve complete drive and peripheral configuration settings
- Device Properties - View additional device information
 - Component details
 - Logic Status and Feedback
 - Fault / Event queue
 - Alarms
 - Diagnostics
 - Language selection
- Device Flash - Download new firmware to the drive and/or attached peripherals
- Configuration Manager - a utility tool to disable features if desired
 - Use a Pocket PC for upload/download only (no editing)



Pocket DriveExplorer for Pocket PC

- Limit the Pocket PC to existing saved connections (no new connections are allowed)

Communications

- Serial
 - Local - access the device physically connected to the serial cable (Point-to-Point)
 - Remote - access the device physically connected to the serial cable, and can also 'route' over DeviceNet™, ControlNet™, EtherNet™/IP, DF1 (DPI), or Modbus RTU (DSI) to access other devices
- Wi-Fi (EtherNet/IP)
- Bluetooth wireless technology
 - Local - access a single device (Point-to-Point)
 - Remote - access a device using Bluetooth wireless technology and 'route' over DeviceNet, ControlNet, EtherNet/IP, DF1 (DPI), or Modbus RTU (DSI) to access other devices

Supported Products

- PowerFlex® 4, 4M, 40, 40P, 400 (Component Class) drives
- PowerFlex® 70, 700, 700H, 700S (Architecture Class) drives
- SCANport™ products and select peripherals
- SMC Flex™

System Requirements

- Pocket PC with Windows® Mobile 2003, Windows Mobile 2003 Second Edition or Windows Mobile 5.0
- 64MB RAM

Serial Connectivity

| | | Point-to-Point/Multi-drop | Serial to DeviceNet | Serial to ControlNet | Serial to EtherNet/IP |
|-----------|---|---|--|---|---|
| DSI™ | PowerFlex Component Class Drives | Point-to-Point: 22-SCM-232 serial converter or 1203-USB with 3rd party Pocket PC serial cable (a null modem adapter (1203-SNM) may also be required) Multi-drop: add AK-UO-RJ45-TB2P and serial cable for each node | Includes Point-to-Point hardware plus: • 22-COMM-D DeviceNet adapter in the local device | Includes Point-to-Point hardware plus: • 22-COMM-C ControlNet adapter in the local device | Includes Point-to-Point hardware plus: • 22-COMM-E EtherNet/IP adapter in the local device |
| DPI™ | PowerFlex Architecture Class Drives | Point-to-Point: 1203-SSS (Series B or higher) serial converter or 1203-USB with 3rd party Pocket PC serial cable (a null modem adapter (1203-SNM) may also be required) Multi-drop: add 20-COMM-S and serial cable for each node | Includes Point-to-Point hardware plus: • 20-COMM-D DeviceNet adapter in the local device | Includes Point-to-Point hardware plus: • 20-COMM-C or 20-COMM-Q ControlNet adapter in the local device | Includes Point-to-Point hardware plus: • 20-COMM-E EtherNet/IP adapter in the local device |
| SCANport™ | 1305 AC Drive 1336 PLUS Drive 1336 PLUS II 1336 IMPACT Drive 1336 FORCE Drive 1336 REGEN 1397 DC Drive 1557 MV Drive, etc. | Point-to-Point: 1203-SSS serial converter or 1203-USB with 3rd party Pocket PC serial cable (a null modem adapter (1203-SNM) may also be required) Multi-drop: N/A | • 1203-SFC serial cable (supplied with 1203-SSS) • 3rd party Pocket PC serial cable - a null modem adapter (1203-SNM) may also be required • 1203-GU6, 1336-GM6, 1203-GK5, or 1336-GM5 DeviceNet adapter with the local device | • 1203-SFC serial cable (supplied with 1203-SSS) • 3rd party Pocket PC serial cable - a null modem adapter (1203-SNM) may also be required • 1203-CN1 ControlNet module with the local device | • 1203-SFC serial cable (supplied with 1203-SSS) • 3rd party Pocket PC serial cable - a null modem adapter (1203-SNM) may also be required • 1203-EN1 EtherNet/IP adapter with the local device |

Wireless Connectivity

| | | EtherNet/IP | Bluetooth Technology |
|-----------|---|--|---|
| DSI™ | PowerFlex Component Class Drives | • 3rd party Ethernet wireless access point • 22-COMM-E EtherNet/IP adapter in the drive | • 22-WIM-N1 Nema 1 or 22-WIM-N4 Nema 4 Wireless Interface Module Note: Supports routing over DeviceNet, ControlNet, EtherNet/IP or Modbus RTU (DSI). |
| DPI™ | PowerFlex Architecture Class Drives | • 3rd party Ethernet wireless access point • 20-COMM-E EtherNet/IP adapter in the drive | • 20-WIM-N1 Nema 1 or 20-WIM-N4 Nema 4 Wireless Interface Module, or PowerFlex 70 Nema 4/12 drive with WIM cover option Note: Supports routing over DeviceNet, ControlNet, EtherNet/IP or DF1. |
| SCANport™ | 1305 AC Drive 1336 PLUS Drive 1336 PLUS II 1336 IMPACT Drive 1336 FORCE Drive 1336 REGEN 1397 DC Drive 1557 MV Drive, etc. | • 3rd party Ethernet wireless access point • 1203-EN1 EtherNet/IP module with the drive | • 20-WIM-N1 Nema 1 Wireless Interface Module (typically used with 20-HIM-B1 Nema 1 Bezel Kit), or 20-WIM-N4S Nema 4 Wireless Interface Module Note: Only the drive connected to by the 20-WIM can be accessed. Routing over DeviceNet, ControlNet or EtherNet/IP is not possible. |

Ethernet is a trademark of Digital Equipment Corporation, Intel, and Xerox Corporation. Bluetooth is a registered trademark of the Bluetooth SIG, Inc. Wi-Fi is a registered trademark of the Wi-Fi Alliance.

DriveExplorer, SCANport, DPI, DSI, PowerFlex, 1336 IMPACT, 1336 FORCE, SSC, SMP, DSI, DPI, and SMC are trademarks of Rockwell Automation.

ControlNet is a trademark of ControlNet International, Ltd.

DeviceNet is a trademark of the Open DeviceNet Vendor Association.

Windows and Microsoft are registered trademarks of Microsoft Corporation. Windows Mobile is a trademark of Microsoft Corporation.

www.rockwellautomation.com

Power, Control and Information Solutions

Americas: Rockwell Automation, 1201 South Second Street, Milwaukee, WI 53204-2496 USA, Tel: (1) 414.382.2000, Fax: (1) 414.382.4444

Europe/Middle East/Africa: Rockwell Automation SA/NV, Vorstlaan/Boulevard du Souverain 36, 1170 Brussels, Belgium, Tel: (32) 2 663 0600, Fax: (32) 2 663 0640

Asia Pacific: Rockwell Automation, Level 14, Core E, Cyberport 3, 100 Cyberport Road, Hong Kong, Tel: (852) 2887 4788, Fax: (852) 2508 1846