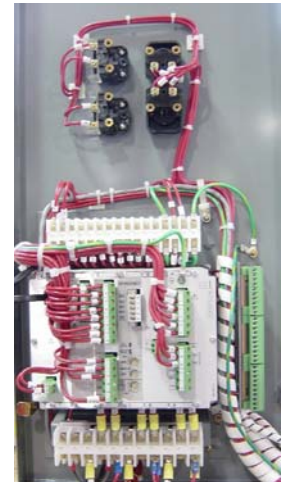




# Motor Protection System Conversion Kit GE Multilin to Bulletin 825-P Motor Protection Relay

## Product Profile

*The Allen-Bradley Motor Protection System Conversion Kit allows customers to convert an existing GE Multilin (ie. 169, 269, 269 Plus, 369) motor protection relay to a Bulletin 825 Plus using existing space,, no additional wiring and the latest communication capabilities. The 825-P conversion kit is a cost competitive solution that provides the features and functionality of the GE Multilin with additional benefits.*



*Bulletin 825-P Motor Protection System Conversion Kit with all available options.*

### Easy Installation

The 825-P Modular Protection System Conversion Kit is a standard kit with a modular design that allows easy installation that uses the existing low voltage door and panels and requires no additional wiring. The kit easily fits into the existing GE Multilin space.

### Increased Communication

The Bulletin 825-P offers options for DeviceNet™ or Modbus™ communication methods (Option card required).

It also provides programmable analog output and 12 RTD inputs with remote RTD Scanner.

### Personnel Safety

The Bulletin 825-P reflects the increased safety regulatory requirements by providing the following protection:

- Equipment construction:
  - Touch protection
  - Insulated housing
- Motor protective functions:
  - Earth (ground) fault
  - High overload, stalling and jam
  - Phase reversal

### Reliable Motor Protection

The Bulletin 825-P Motor Protection System for medium voltage motor starters offers a compact, modular design that allows configuration of the device's functional capabilities to match the application requirements. It helps eliminate potential problems before major repairs are necessary and production loss occurs by providing the following protective functions:

- High overload, stalling
- Underloading
- Wrong direction of rotation

For details options and pricing, please contact your local Rockwell Automation representative.

## Bulletin 825-P Features:

Function Description	GE Multilin		Bul. 825-P Parameters
	169/269/269 Plus	369	
Current Transformer (Primary)	20A – 1500A	1A – 5000A	0.5 A – 5000 A
Full Load Current (FLC)	10A – 1000A	1A – 5000A	0.5 A – 5000 A
Thermal Overload Protection	Yes	Yes	Yes
Overcurrent Protection	Yes	Yes	Yes
Allowable Acceleration Time	0.5 – 125 s	1 – 250 s	1s – 240s
Allowable RTD types	10 Ω Cu, 100 Ω Ni, 120 Ω Ni, 100 Ω Pt	10 Ω Cu, 100 Ω Ni, 120 Ω Ni, 100 Ω Pt	10 Ω Cu, 100 Ω Ni, 120 Ω Ni, 100 Ω Pt
Number of Winding RTDs	1 – 6	1 – 6 w/RTD option	1 – 12 ❶
Number of Bearing RTDs	1 – 2	1 – 4 w/RTD option	1 – 12 ❶
Allowable Number of Starts	1 – 5 (starts per hour)	1 – 5 (starts per hour)	1 – 15 (starts per hour)
Phase Unbalance Trip Current	4 – 30 (percent of FLC)	4 – 30 (percent of FLC)	5 – 80 (percent of FLC)
Phase Unbalance Alarm Current	4 – 30 (percent of FLC)	4 – 30 (percent of FLC)	5 – 80 (percent of FLC)
Phase Reversal Protection	Yes (w/metering option)	Yes (w/metering option)	Yes

❶ Total of twelve (12) inputs for winding, ambient or other RTD.

Function Description	GE Multilin		Bul. 825-P Parameters
	169/269/269 Plus	369	
Jam Protection	Yes	Yes	Yes
Undervoltage Protection	Yes (w/metering option)	Yes (w/metering option)	Yes
Ground Fault Alarm Current ❶	1 – 10 A	0.25 – 25 A	0.01 – 25 A
Ground Fault Trip Current ❶	1 – 10 A	0.25 – 25 A	0.01 – 25 A
Ground Fault Trip Delay Time	1 – 255 s	0 – 255 s	0 s – 5 s
Short Circuit Protection	Yes	Yes	Yes
Jam Circuit Current	1.5 – 6 (multiple of FLC)	1 – 6 (multiple of FLC)	1 – 6 (multiple of FLC)
Underload Trip Current	1 – 1000 A	10 – 99 (percent of FLC)	10 – 100 (percent of FLC)
Underload Trip Time Delay	1 – 255 s	1 – 255 s	1 – 120 s
Ultimate Trip Current	4 – 12 (multiple of FLC)	2 – 20 (multiple of FLC)	4 – 12 (multiple of FLC)
Winding Alarm Temperature	0 – 200°C	1 – 200°C	0°C – 200°C
Winding Trip Temperature	0 – 200°C	1 – 200°C	0°C – 200°C
Bearing Alarm Temperature	0 – 200°C	1 – 200°C	0°C – 200°C
Bearing Trip Temperature	0 – 200°C	1 – 200°C	0°C – 200°C
Ambient Temperature Sensor Input	No	Yes	Yes
Reset Condition	Auto / Manual	Auto / Manual	Auto / Manual
Speed Switch Input	169/269 – No 269 Plus – Yes	Yes	Yes
Analog Output	Yes	Yes	Yes
Communication	Modbus	Modbus	DeviceNet, Modbus
Trip Contacts	1 form C	1 form C	1 form C
Alarm Contacts	1 form C	1 form C	1 form A or B

❶ The 825-PI core balance/ground fault current transformer (GFCT) input has an operating range of 5 to 500 mA. Care is required to ensure this input range is not exceeded. When existing CT has a ratio of 50:0.025 (2000:1), the minimum trip level is 10A primary. For lower trip levels, the core balance/GFCT will need to be replaced with a 100:1 ratio CT. Refer to the catalog number breakdown for part numbers of various donut CT window sizes.

[www.rockwellautomation.com](http://www.rockwellautomation.com)

**Corporate Headquarters**

Rockwell Automation, 777 East Wisconsin Avenue, Suite 1400, Milwaukee, WI, 53202-5302 USA, Tel: (1) 414.212.5200, Fax: (1) 414.212.5201

**Headquarters for Allen-Bradley Products, Rockwell Software Products and Global Manufacturing Solutions**

Americas: Rockwell Automation, 1201 South Second Street, Milwaukee, WI 53204-2496 USA, Tel: (1) 414.382.2000, Fax: (1) 414.382.4444

Europe/Middle East/Africa: Rockwell Automation SA/NV, Vorstlaan/Boulevard du Souverain 36, 1170 Brussels, Belgium, Tel: (32) 2 663 0600, Fax: (32) 2 663 0640

Asia Pacific: Rockwell Automation, 27/F Citicorp Centre, 18 Whitfield Road, Causeway Bay, Hong Kong, Tel: (852) 2887 4788, Fax: (852) 2508 1846

**Headquarters for Dodge and Reliance Electric Products**

Americas: Rockwell Automation, 6040 Ponders Court, Greenville, SC 29615-4617 USA, Tel: (1) 864.297.4800, Fax: (1) 864.281.2433

Europe/Middle East/Africa: Rockwell Automation, Brühlstraße 22, D-74834 Elztal-Dallau, Germany, Tel: (49) 6261 9410, Fax: (49) 6261 17741

Asia Pacific: Rockwell Automation, 55 Newton Road, #11-01/02 Revenue House, Singapore 307987, Tel: (65) 6356-9077, Fax: (65) 6356-9011

**Medium Voltage Products**, 135 Dundas Street, Cambridge, ON, N1R 5X1 Canada, Tel: (1) 519.740.4100, Fax: (1) 519.623.8930, [www.ab.com/mvb](http://www.ab.com/mvb)