

PRODUCT PROFILE

X-Y PLOTTER SERIES E MARKING SYSTEM

The flexible marking tool of the Allen-Bradley terminal block product line is the X-Y Plotter. This marking solution accommodates the low to medium volume marking users.

ADVANTAGES

- Plot partial marker card
- Load up to 5 cards at a time (mix and match)
- Easy to use AB-Plot software
- Character customization
- Supported by Allen-Bradley and its extensive network of distributors
- Can print markers for Terminal Blocks, contactors, relays, and more

SYSTEM REQUIREMENTS

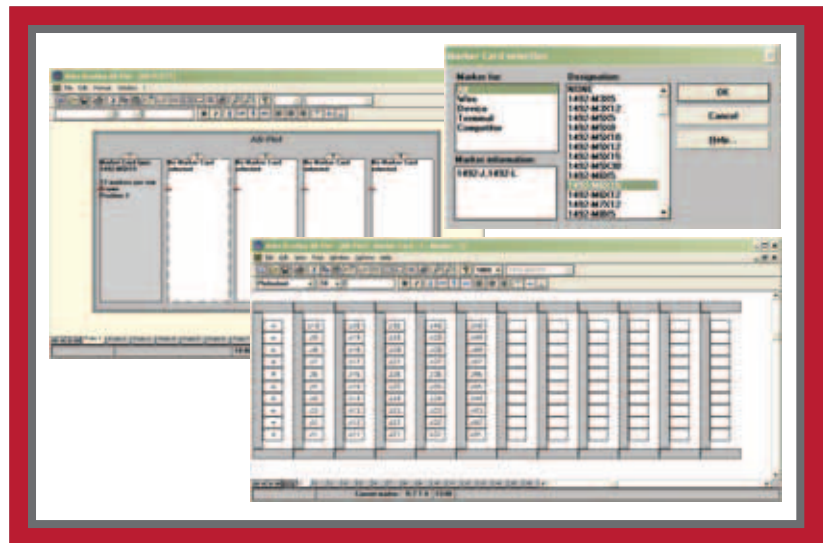
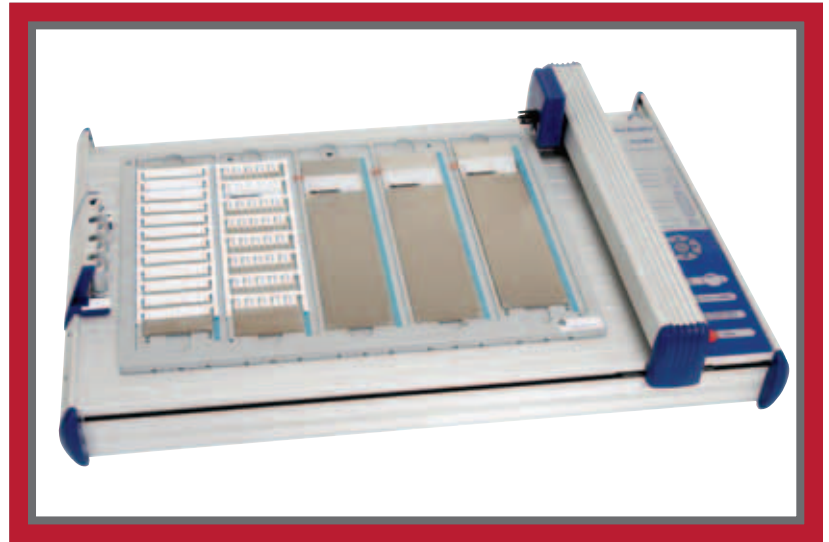
- Personal computer with at least an 80486 processor
- Microsoft Windows™ 95 or later
- Hard drive with at least 50 MB space available
- One open parallel or USB communication port

THE X-Y PLOTTER KIT INCLUDES:

- Plotter
- Adapter Plate
- AB-Plot software
- Disposable 0.25 mm ink pen
- Parallel port cable
- Power cable
- User manuals

All you need to supply are the marker cards and your personal computer!

PLOTTER, SOFTWARE AND ACCESSORIES



ADDITIONAL ACCESSORIES INCLUDE:

- Pen adapters
- Refillable pens and ink
- Service kit
- 0.25 or 0.35 mm pens
- Cleaning kit

PRODUCT SELECTION

X-Y Plotter Series E, 1492-PLTKIT



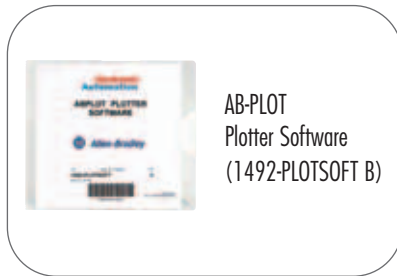
Plotter Kit includes: Plotter, Parallel port communication cable, Power cable, Disposable ink pen, Adapter plate, AB-Plot software



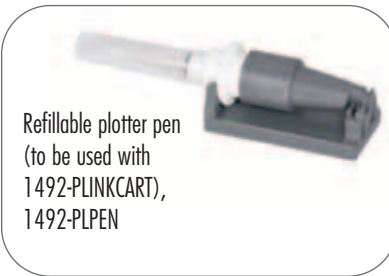
Disposable plotter ink pen, 0.25 mm
1492-PLOTPEN25



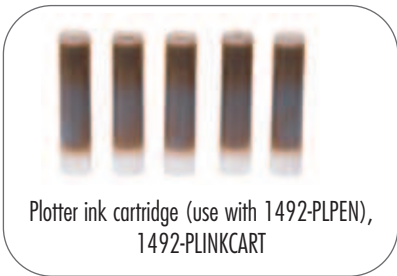
Disposable plotter ink pen, 0.35 mm
1492-PLOTPEN35



AB-PLOT Plotter Software (1492-PLOTSOFT B)



Refillable plotter pen (to be used with 1492-PLINKCART), 1492-PLPEN



Plotter ink cartridge (use with 1492-PLPEN), 1492-PLINKCART



Adapter and pen 1492-PLOTADPT



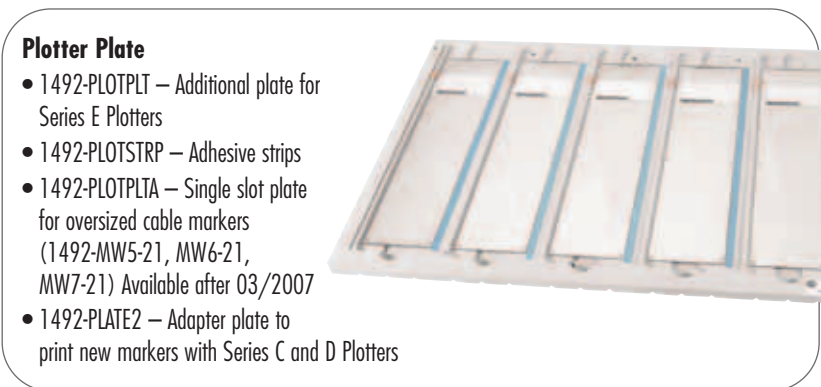
Plotter cleaning solution, 1492-PLSOLN



Plotter cleaning container and cloth, 1492-PLCLEAN



Service kit 1492-PLOTSERV



Plotter Plate

- 1492-PLOTPLT – Additional plate for Series E Plotters
- 1492-PLOTSTRP – Adhesive strips
- 1492-PLOTPLTA – Single slot plate for oversized cable markers (1492-MW5-21, MW6-21, MW7-21) Available after 03/2007
- 1492-PLATE2 – Adapter plate to print new markers with Series C and D Plotters

www.rockwellautomation.com

Power, Control and Information Solutions Headquarters

Americas: Rockwell Automation, 1201 South Second Street, Milwaukee, WI 53204-2496 USA, Tel: (1) 414.382.2000, Fax: (1) 414.382.4444
 Europe/Middle East/Africa: Rockwell Automation, Vorstlaan/Boulevard du Souverain 36, 1170 Brussels, Belgium, Tel: (32) 2 663 0600, Fax: (32) 2 663 0640
 Asia Pacific: Rockwell Automation, Level 14, Core F, Cyberport 3, 100 Cyberport Road, Hong Kong, Tel: (852) 2887 4788, Fax: (852) 2508 1846