



Allen-Bradley

140U Molded Case Circuit Breakers

100A G-Frame

The 140U-G Frame Molded Case Circuit Breakers are available in 2 and 3 pole versions, meeting the market needs for lower cost and functionality molded case circuit breakers. These thermal magnetic circuit breakers are ideal for use on applications of 480V or less.

Features

Global Approvals & Certifications

- UL489
- HACR
- CSA C22.2

Current Ranges

- Up to 100 A on the 3 pole
- Up to 50 A on the 2 poles

Field Accessories

- Locking attachments
- DIN rail mounting adapters
- Variable depth rotary operating mechanism

Factory Installed Options

- Auxiliary contacts for the 2 pole
- Auxiliary contacts and a shunt plate



140U Molded Case Circuit Breakers 2 and 3 Poles

Number of poles	Interrupt Ratings (kA)				
	AC 50/60HZ			DC	
	208V	240V	480V	125V	250V
2	65	65	14	10	10
3	65	65	22	10	10

Note for DC ratings

1. Require an 8 millisecond time constant for the load.
2. For 250V, require the use of 2 poles.



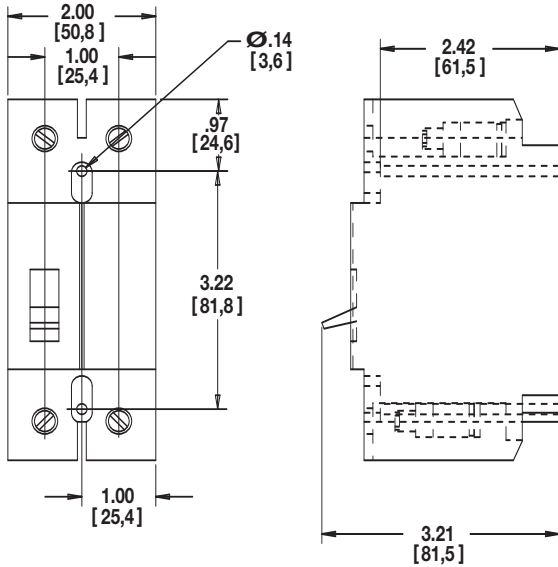
DIN Rail Adapter 140U-G-DRA2

Product Profile

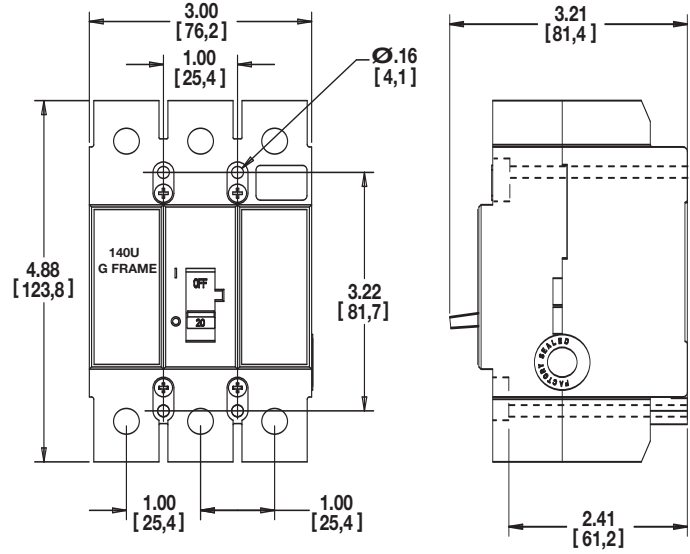
Rockwell Automation

Product Selection

2 Pole Dimensions



3 Pole Dimensions



Specifications

Operating range -20°C to 60°C

Wire size

Circuit Breaker Amperes	Terminal Material	Wire Type	Wire Range – AWG (Metric)
15-100	Plated Steel Box Clamp	75° Cu Only	#14-3 (2.5 - 26 mm)

www.rockwellautomation.com

Corporate Headquarters

Rockwell Automation, 777 East Wisconsin Avenue, Suite 1400, Milwaukee, WI, 53202-5302 USA, Tel: (1) 414.212.5200, Fax: (1) 414.212.5201

Headquarters for Allen-Bradley Products, Rockwell Software Products and Global Manufacturing Solutions

Americas: Rockwell Automation, 1201 South Second Street, Milwaukee, WI 53204-2496 USA, Tel: (1) 414.382.2000, Fax: (1) 414.382.4444

Europe/Middle East/Africa: Rockwell Automation SA/NV, Vorstlaan/Boulevard du Souverain 36, 1170 Brussels, Belgium, Tel: (32) 2 663 0600, Fax: (32) 2 663 0640

Asia Pacific: Rockwell Automation, 27/F Citicorp Centre, 18 Whitfield Road, Causeway Bay, Hong Kong, Tel: (852) 2887 4788, Fax: (852) 2508 1846

Headquarters for Dodge and Reliance Electric Products

Americas: Rockwell Automation, 6040 Ponders Court, Greenville, SC 29615-4617 USA, Tel: (1) 864.297.4800, Fax: (1) 864.281.2433

Europe/Middle East/Africa: Rockwell Automation, Brühlstraße 22, D-74834 Elztal-Dallau, Germany, Tel: (49) 6261 9410, Fax: (49) 6261 17741

Asia Pacific: Rockwell Automation, 55 Newton Road, #11-01/02 Revenue House, Singapore 307987, Tel: (65) 6356-9077, Fax: (65) 6356-9011