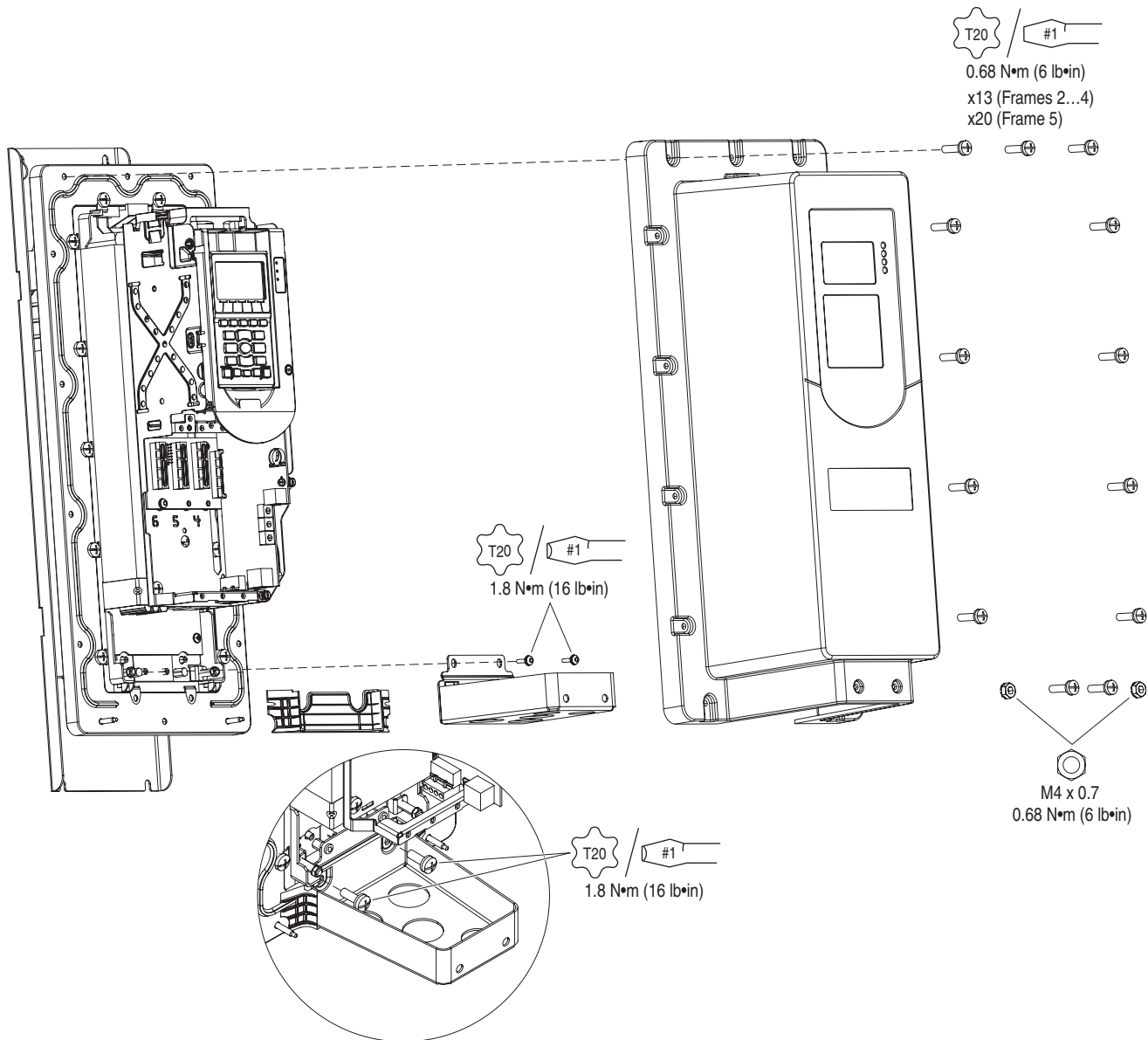
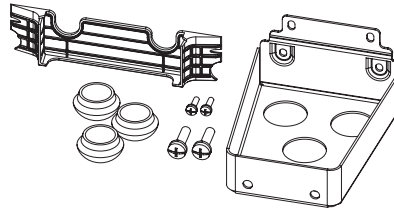


IP54, NEMA/UL Type 12 Conduit Plate

Installation Instructions

Drive Frame	Kit Number
2	SK-R1-CPLT12-F2
3	SK-R1-CPLT12-F3
4	SK-R1-CPLT12-F4
5	SK-R1-CPLT12-F5



www.rockwellautomation.com



PN-42013

Power, Control and Information Solutions Headquarters

Americas: Rockwell Automation, 1201 South Second Street, Milwaukee, WI 53204 USA, Tel: (1) 414.382.2000, Fax: (1) 414.382.4444

Europe/Middle East/Africa: Rockwell Automation, Vorstlaan/Boulevard du Souverain 36, 1170 Brussels, Belgium, Tel: (32) 2 663 0600, Fax: (32) 2 663 0640

Asia Pacific: Rockwell Automation, Level 14, Core F, Cyberport 3, 100 Cyberport Road, Hong Kong, Tel: (852) 2887 4788, Fax: (852) 2508 1846

Rockwell Automation Publication RA-IN025A-EN-P – August 2009

