

DriveExplorer PC Software System Requirements / Installation Instructions

System Requirements

Windows® 2000 (Service Pack 4 or later) or Windows XP (Service Pack 3 or later)

PC with 486 66MHz processor or better with at least 16 MB of RAM and 6 MB of hard disk space, VGA monitor, CD-ROM drive (for installation only), mouse or other pointing device, keyboard, serial communications or Ethernet connection.

Windows Vista Business or Basic versions

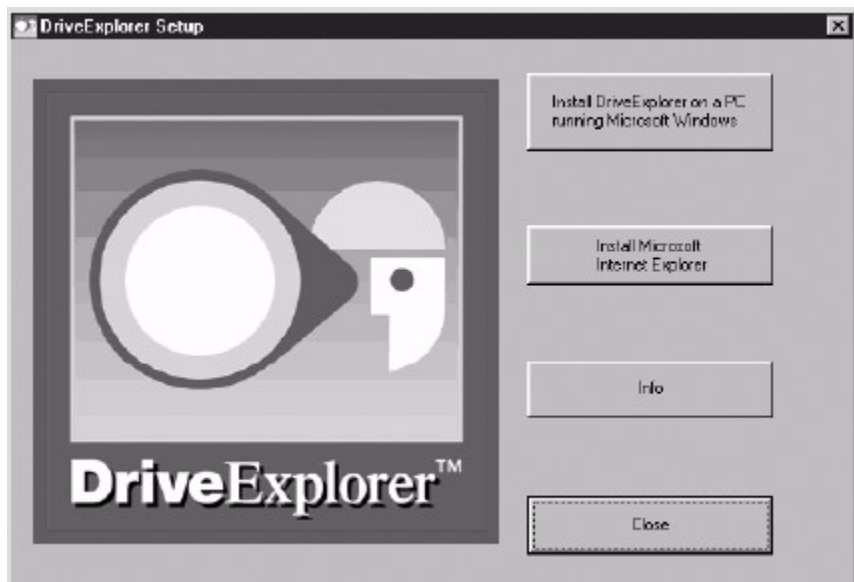
PC with 800MHz 32-bit (x86) or 64-bit (x64) processor or better with at least 512 MB of RAM and 20 GB hard drive, SVGA graphics with 800x600 resolution or higher, CD-ROM drive (for installation only), mouse or other pointing device, keyboard, serial communications or Ethernet connection.

Internet Explorer version 6.0 (included on CD) or later must be installed on your PC.

Installation Instructions

Note: It is strongly recommended that you quit all Windows programs before running this Setup program.

1. Insert the DriveExplorer installation CD into the PC's CD-ROM drive. The installation application should open automatically. If the installation application does not open automatically, run Setup.exe at the root of the installation CD. The DriveExplorer Setup screen appears:



2. Click the **Install DriveExplorer on a PC running Microsoft Windows** button.
3. Follow the instructions in the Setup Wizard and respond to the prompts on the PC.
4. If you do not have Microsoft Internet Explorer installed on your PC:
 - a. Click the **Install Microsoft Internet Explorer** button.
 - b. Follow the instructions in the Setup Wizard and respond to the prompts on the PC.
5. When installation finishes, click **Close**.

U.S. Allen-Bradley Drives Technical Support - Tel: (1) 262.512.8176, Fax: (1) 262.512.2222, Email: support@drives.ra.rockwell.com, Online: www.ab.com/support/abdrives

www.rockwellautomation.com

Power, Control and Information Solutions Headquarters

Americas: Rockwell Automation, 1201 South Second Street, Milwaukee, WI 53204 USA, Tel: (1) 414.382.2000, Fax: (1) 414.382.4444

Europe/Middle East/Africa: Rockwell Automation, Vorstlaan/Boulevard du Souverain 36, 1170 Brussels, Belgium, Tel: (32) 2 663 0600, Fax: (32) 2 663 0640

Asia Pacific: Rockwell Automation, Level 14, Core E, Cyberport 3, 100 Cyberport Road, Hong Kong, Tel: (852) 2887 4788, Fax: (852) 2508 1846