

Installation Instructions

Original Instructions

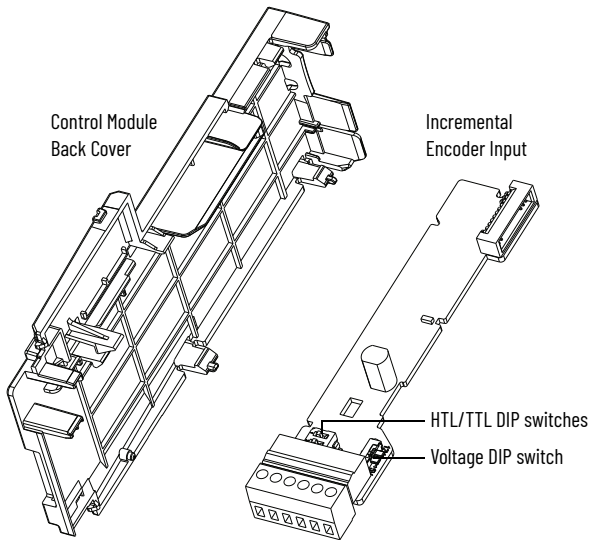


Allen-Bradley

by ROCKWELL AUTOMATION

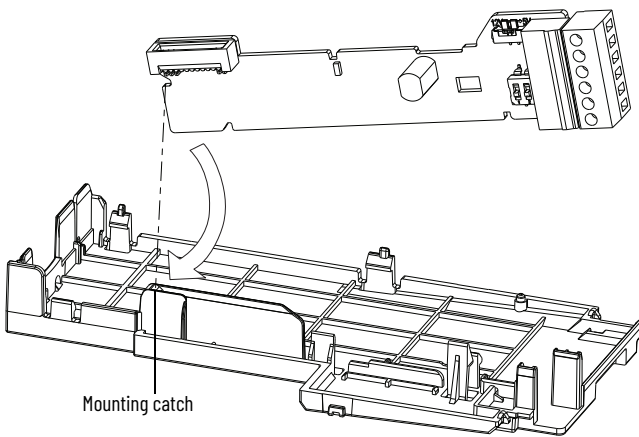
PowerFlex 525 Incremental Encoder Input

Catalog Number: 25-ENC-1



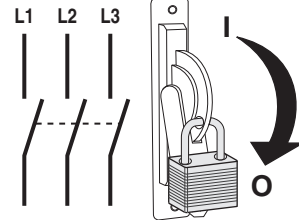
Note: HTL/TTL DIP switch has two positions configured as HTL. The Voltage DIP switch 5V/12 selection is configured as 5V.

3 Mount the Incremental Encoder onto the Control Module Back Cover

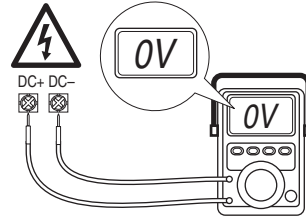


Note: Incremental Encoder Input is for PowerFlex® 525 only. You can install both the communication adapter and optional Incremental Encoder Input on the same Control Module Back Cover.

1



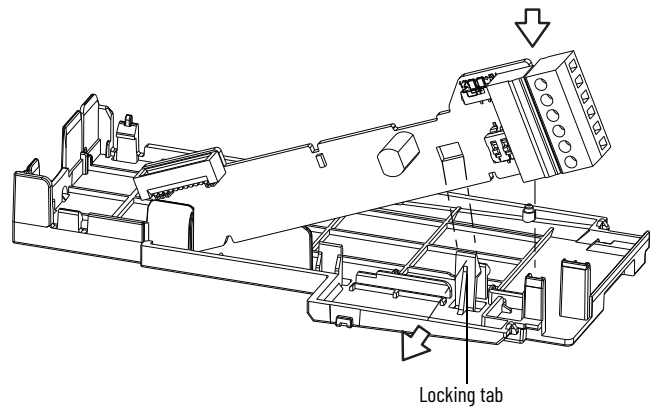
2



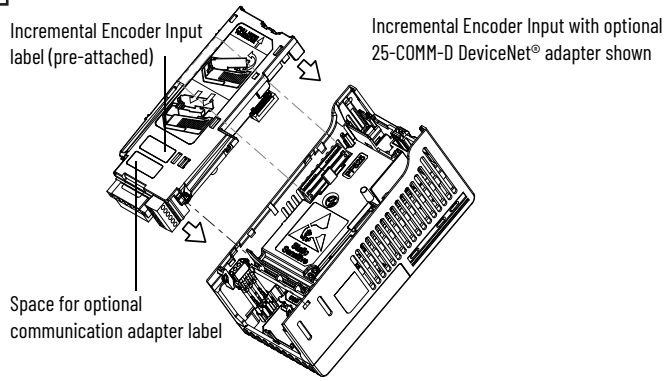
Wait three minutes after shutdown for capacitors to discharge to safe voltage levels.

4

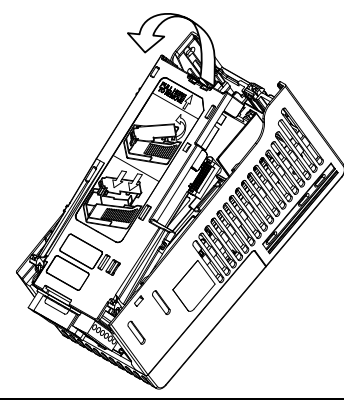
4 Lock the Incremental Encoder onto the Control Module Back Cover



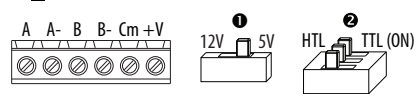
5 Attach the Control Module Back Cover



How to Remove the Control Module Back Cover if Required



6 Wiring the Incremental Encoder



Maximum Wire Size	Minimum Wire Size	Torque
2.08 mm ² (14 AWG)	0.08 mm ² (28 AWG)	0.18...0.22 N•m (1.56...1.9 lb•in)

No.	Signal	Description
A	Encoder A	Single channel, pulse train or quadrature A input.
A-	Encoder A (NOT)	
B	Encoder B	Quadrature B input.
B-	Encoder B (NOT)	
Cm	Power Return	Internal power source 250 mA
+V	5...12V Power ⁽¹⁾	(isolated).
1	Output	DIP switch selects 12 volt or 5 volt power that is supplied at terminals "+V" and "Cm" for the encoder.
2	HTL/TTL DIP switches	Set the position of the DIP switches based on the type of encoder signal used. You must set all switches to the same position.

I/O	Connection Example	I/O	Connection Example
Encoder Power - Internal Drive Power Internal (drive) 12V DC, 250 mA		Encoder Power - External Power Source	
Encoder Signal - Single-Ended, Dual Channel		Encoder Signal - Differential, Dual Channel	

(1) If Encoder requires 24V power, it must be supplied by an external power source

Compatible Encoder Output Voltage

Switch Position	Low Level (UL)	High Level (UH)
TTL	<1.5V	>2.5V
HTL	<3.5V	>5V

Waste Electrical and Electronic Equipment (WEEE)

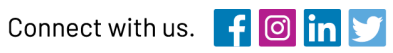


At the end of life, this equipment should be collected separately from any unsorted municipal waste.

Rockwell Automation maintains current product environmental compliance information on its website at rok.auto/pec.

Your comments help us serve your documentation needs better. If you have any suggestions on how to improve our content, complete the form at rok.auto/docfeedback. For technical support, visit rok.auto/support.

Rockwell Otomasyon Ticaret A.Ş. Kar Plaza İş Merkezi E Blok Kat:6 34752 İçerenköy, İstanbul, Tel: +90 (216) 5698400 EEE Yönetmeliğine Uygundur



rockwellautomation.com — expanding human possibility™

AMERICAS: Rockwell Automation, 1201 South Second Street, Milwaukee, WI 53204-2496 USA, Tel: (1) 414.382.2000, Fax: (1) 414.382.4444

EUROPE/MIDDLE EAST/AFRICA: Rockwell Automation NV, Pegasus Park, De Kleetlaan 12a, 1831 Diegem, Belgium, Tel: (32) 2 663 0600, Fax: (32) 2 663 0640

ASIA PACIFIC: Rockwell Automation, Level 14, Core F, Cyberport 3, 100 Cyberport Road, Hong Kong, Tel: (852) 2887 4788, Fax: (852) 2508 1846

Allen-Bradley, expanding human possibility, FactoryTalk, PowerFlex, Rockwell Automation, and TechConnect are trademarks of Rockwell Automation, Inc. DeviceNet is a trademark of ODVA, Inc.

Trademarks not belonging to Rockwell Automation are property of their respective companies.

Publication 520-IN009D-EN-P - May 2021 | Supersedes Publication 520-IN009-EN-P-July 2014
Copyright © 2021 Rockwell Automation, Inc. All rights reserved.

5012621703
25-ENC-1_2020-10

