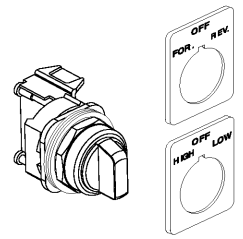




"Forward-Off-Reverse" / "High-Off-Low" Selector Switch Installation Kit

Jeu d'installation pour sélecteur «Avant-Arrêt-Arrière» «Haut-Arrêt-Bas»



(Cat 599-SS09R _)

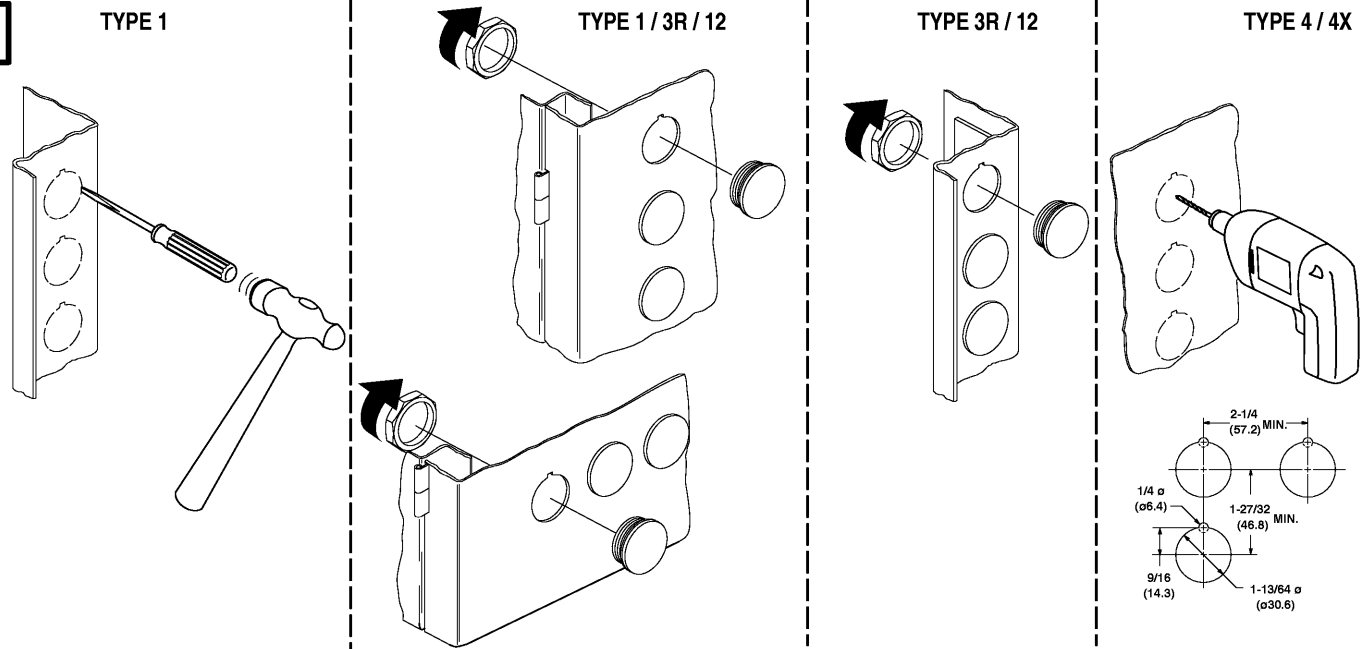
Installation



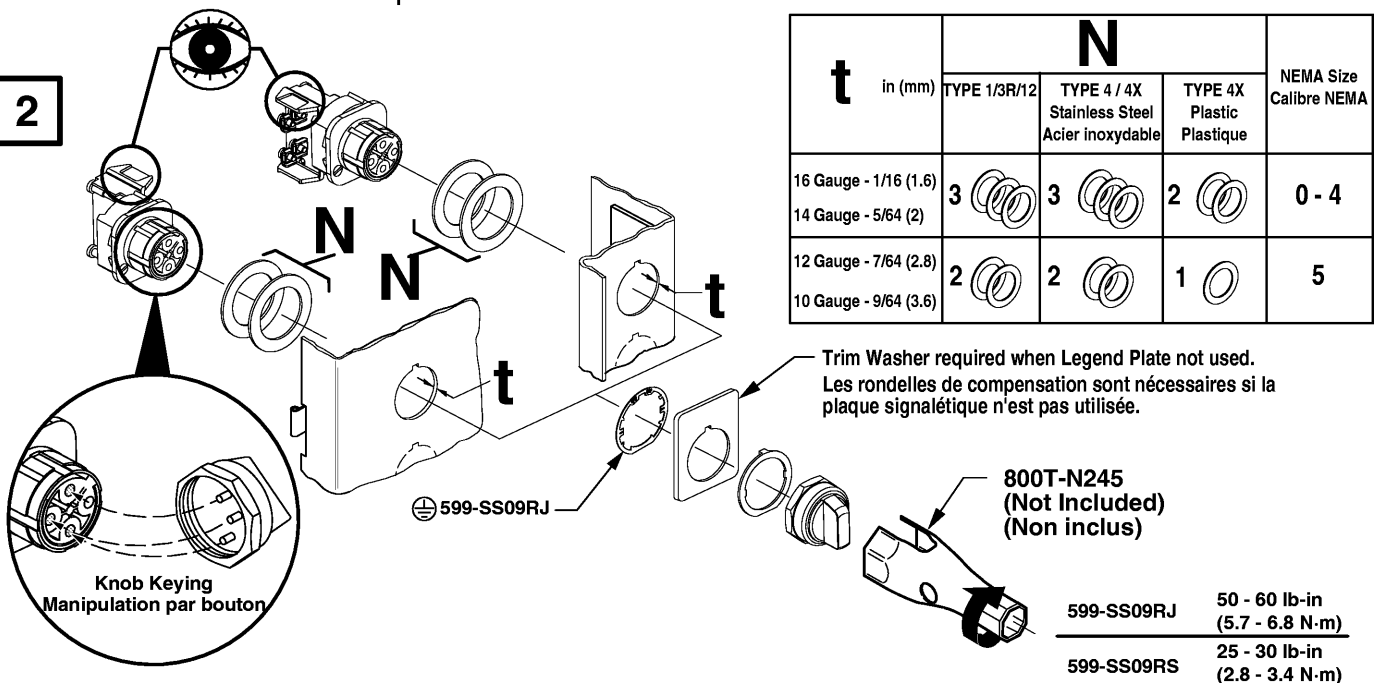
ATTENTION: To prevent electrical shock, disconnect from power source before installing or servicing. Install in suitable enclosure. Keep free from contaminants.

ATTENTION: Avant le montage et la mise en service, couper l'alimentation secteur pour éviter toute décharge. Prévoir une mise en coffret ou armoire appropriée. Protéger le produit contre les environnements agressifs.

1

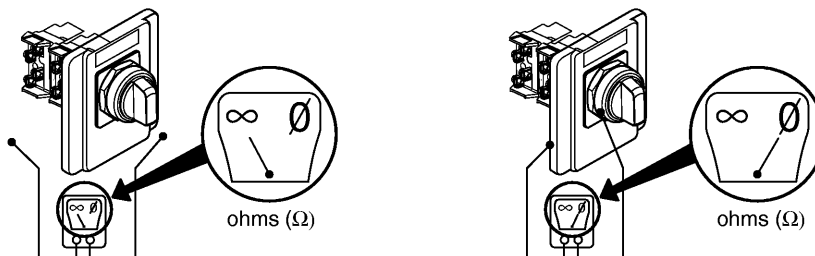


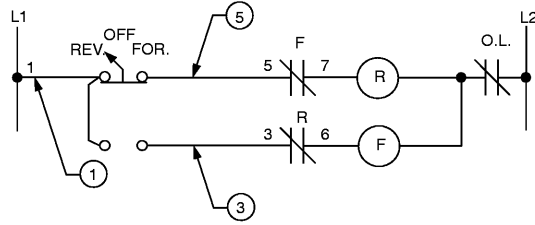
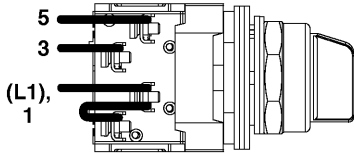
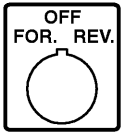
2



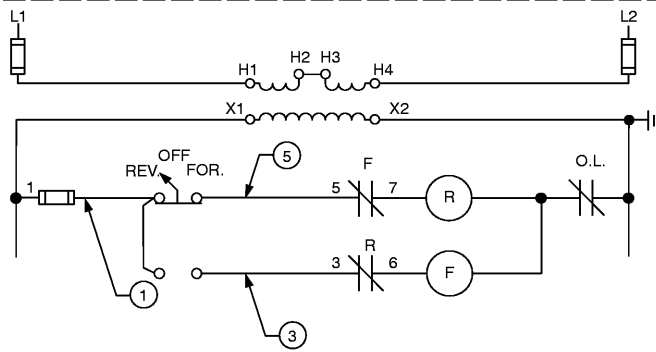
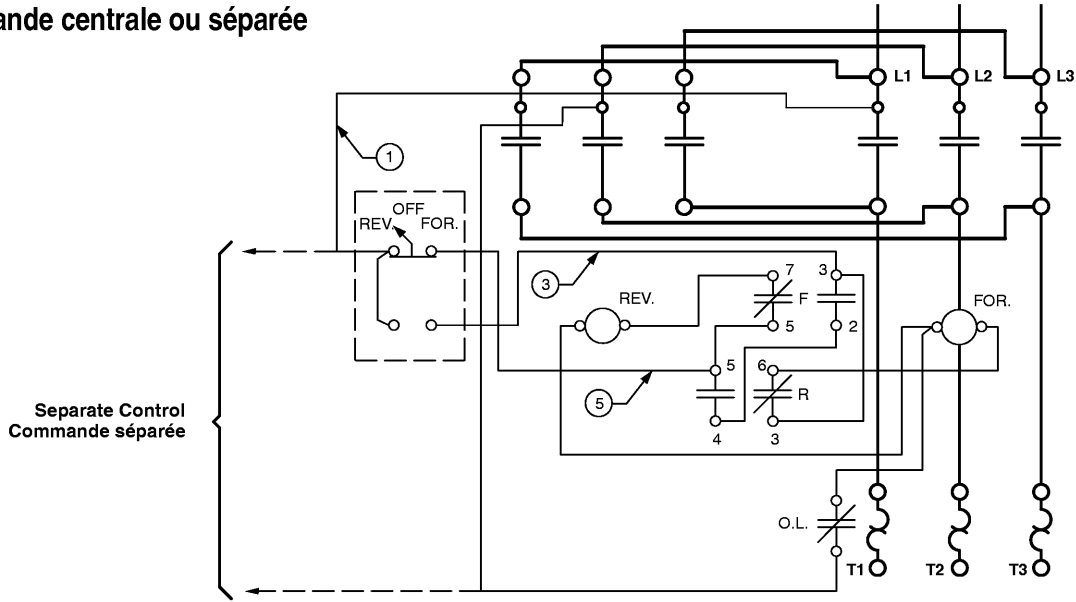
3

Test Essai

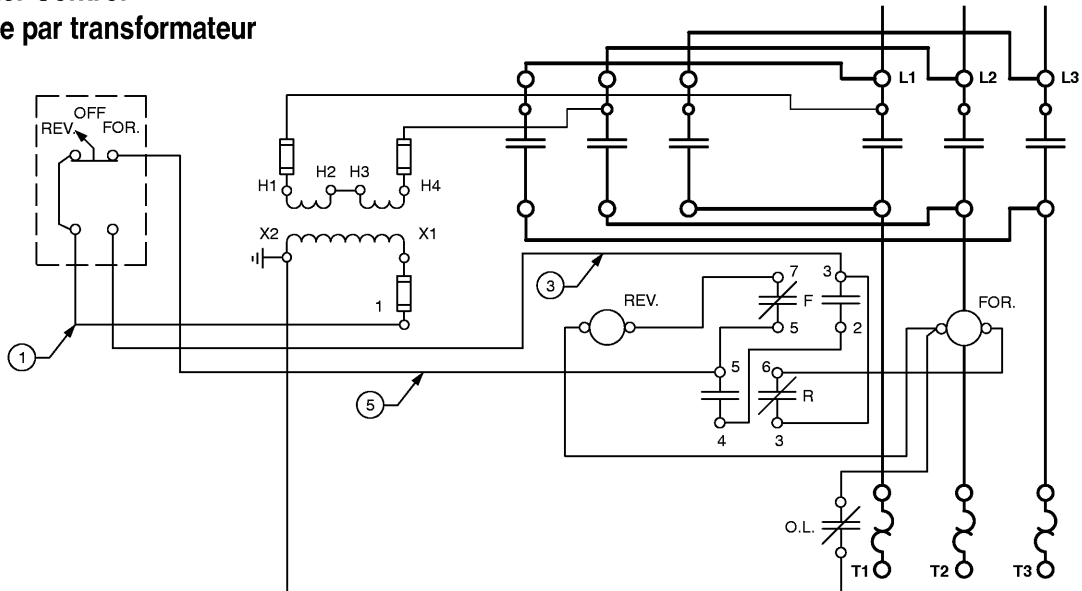


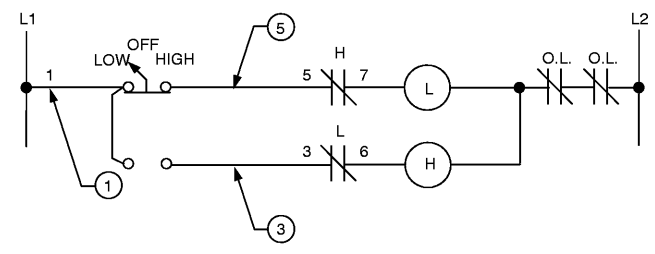
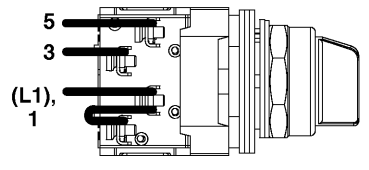
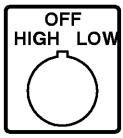


Common or Separate Control
Commande centrale ou séparée

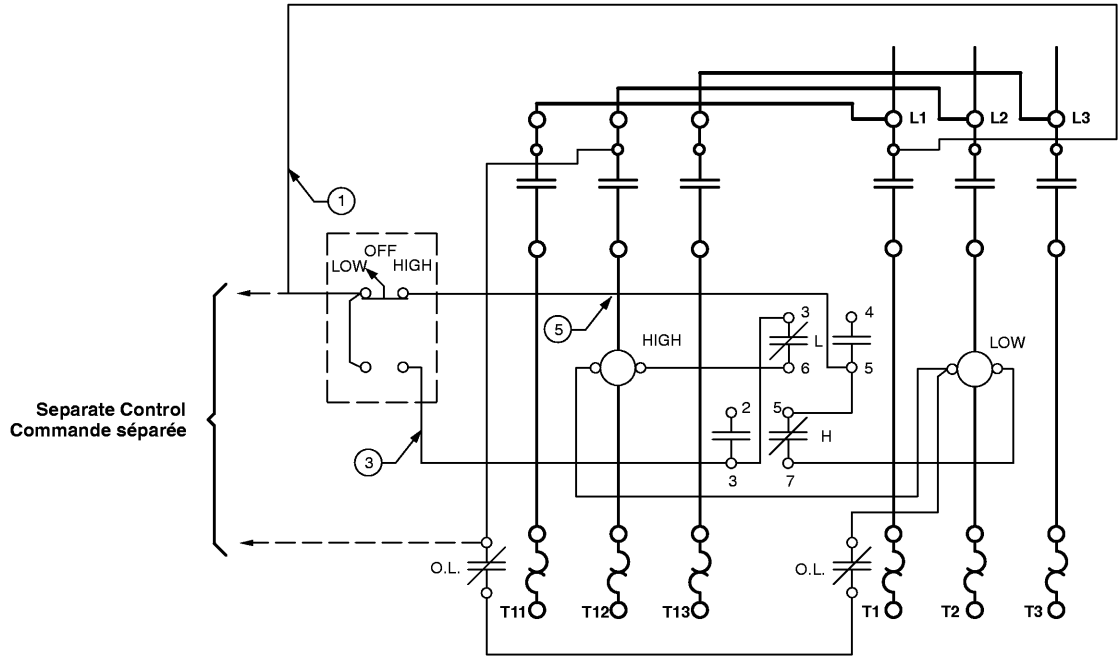


Transformer Control
Commande par transformateur

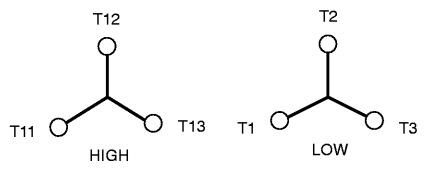


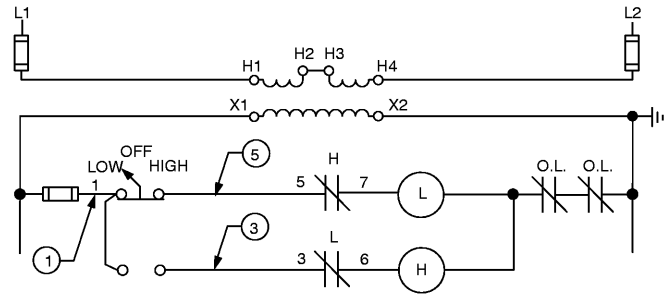
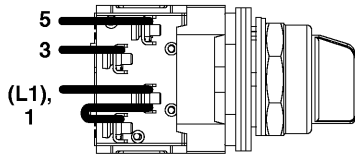
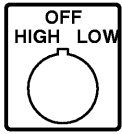


Common or Separate Control for Bulletin 520E Multi-speed Controller, 2-Speed Separate Winding Motors
Commande centrale ou séparée pour processeur à vitesses multiples de Bulletin 520E, moteur de bobinage séparée à deux vitesses

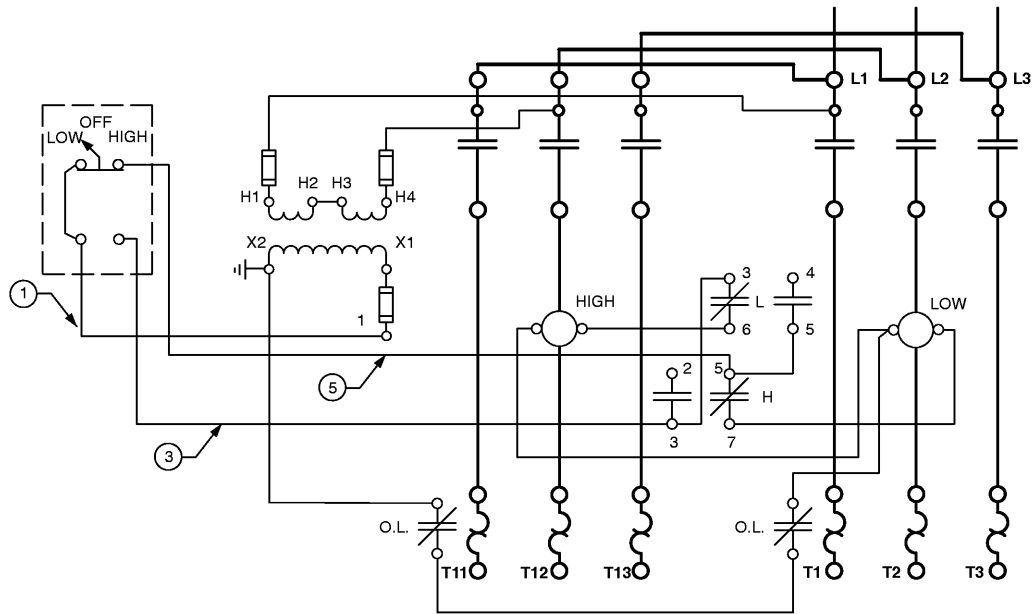


MOTOR TERMINAL MARKINGS
MARQUAGE DU TERMINAL DU MOTEUR

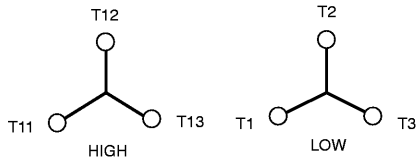


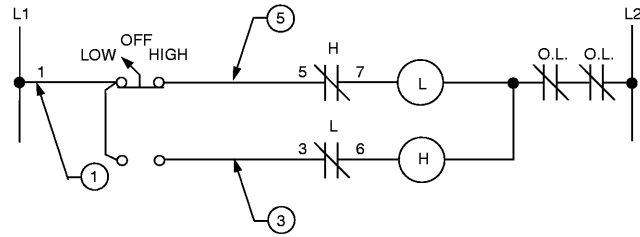
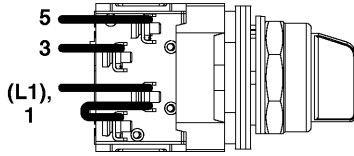
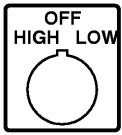


Transformer Control for Bulletin 520E Multi-speed Controller, 2-Speed Separate Winding Motors
Commande par transformateur pour processeur à vitesses multiples de Bulletin 520E, moteur de bobinage séparée à deux vitesses

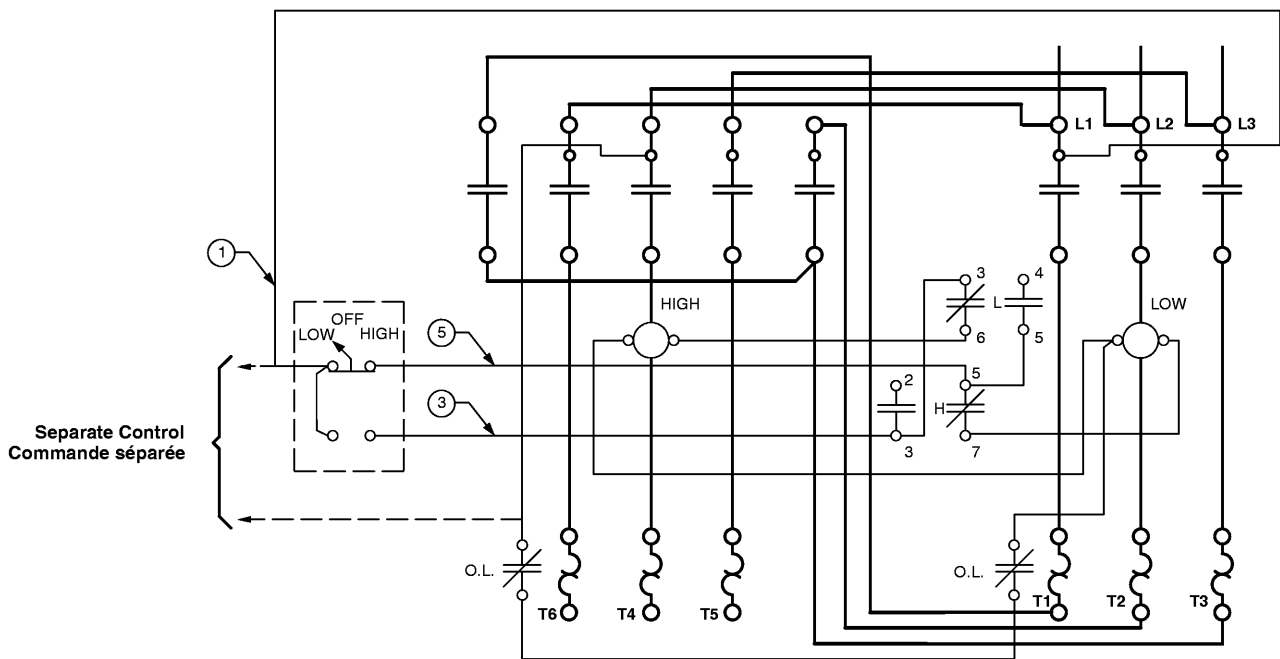


MOTOR TERMINAL MARKINGS
MARQUAGE DU TERMINAL DU MOTEUR

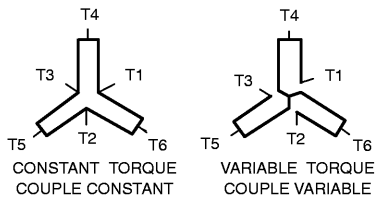




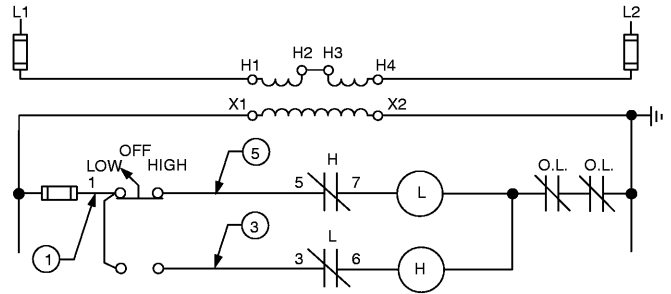
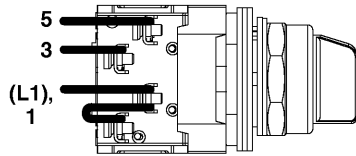
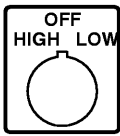
Common or Separate Control for Bulletin 520F Multi-speed Controller, 2-Speed Consequent Pole-Constant or Variable Torque
Commande centrale ou séparée pour processeur à vitesses multiples de Bulletin 520F, constante à pôle conséquent à deux vitesses ou couple variable



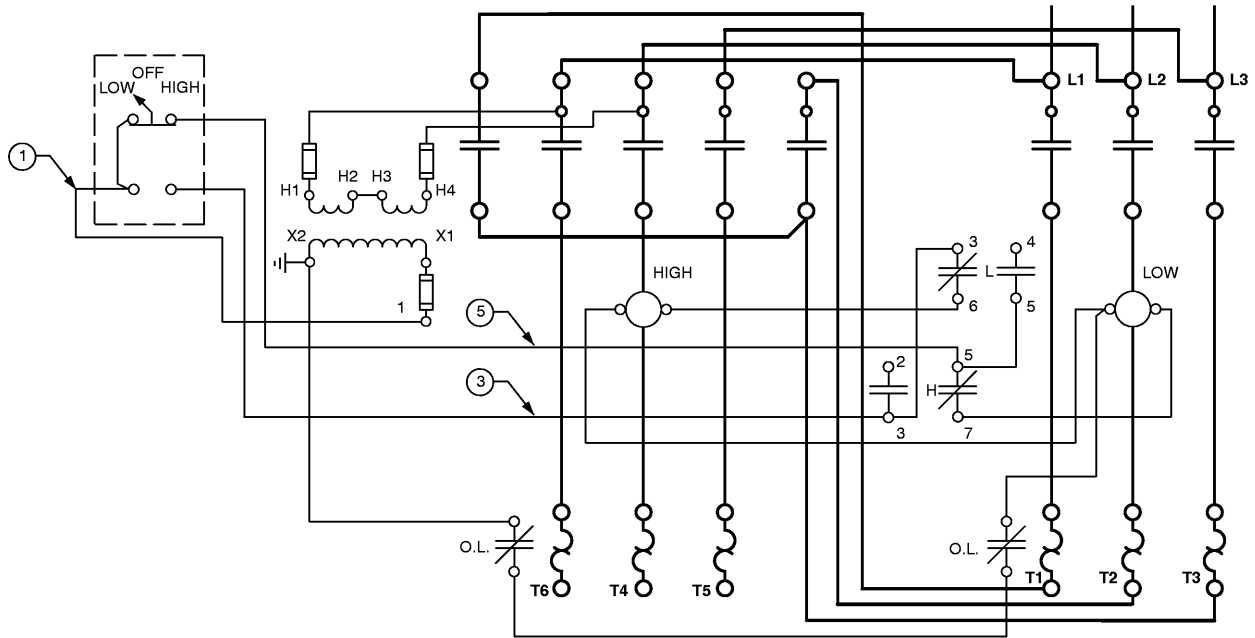
MOTOR TERMINAL MARKINGS
MARQUAGE DU TERMINAL DU MOTEUR



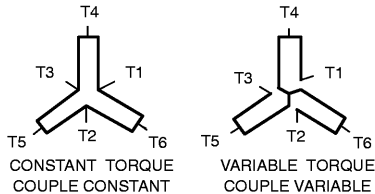
SPEED VITESSE	SUPPLY LINES LIGNES D'ALIMENTATION			OPEN OUVERT	TOGETHER ENSEMBLE		
	L1	L2	L3				
LOW	T1	T2	T3	T4	T5	NONE	
HIGH	T6	T4	T5	NONE	T1	T2	T3



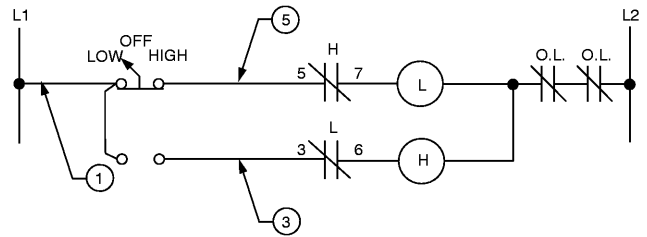
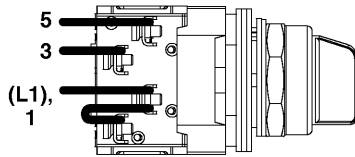
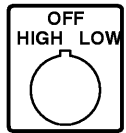
Transformer Control for Bulletin 520F Multi-speed Controller, 2-Speed Consequent Pole-Constant or Variable Torque
Commande par transformateur pour processeur à vitesses multiples de Bulletin 520F, constante à pôle conséquent à deux vitesses ou couple variable



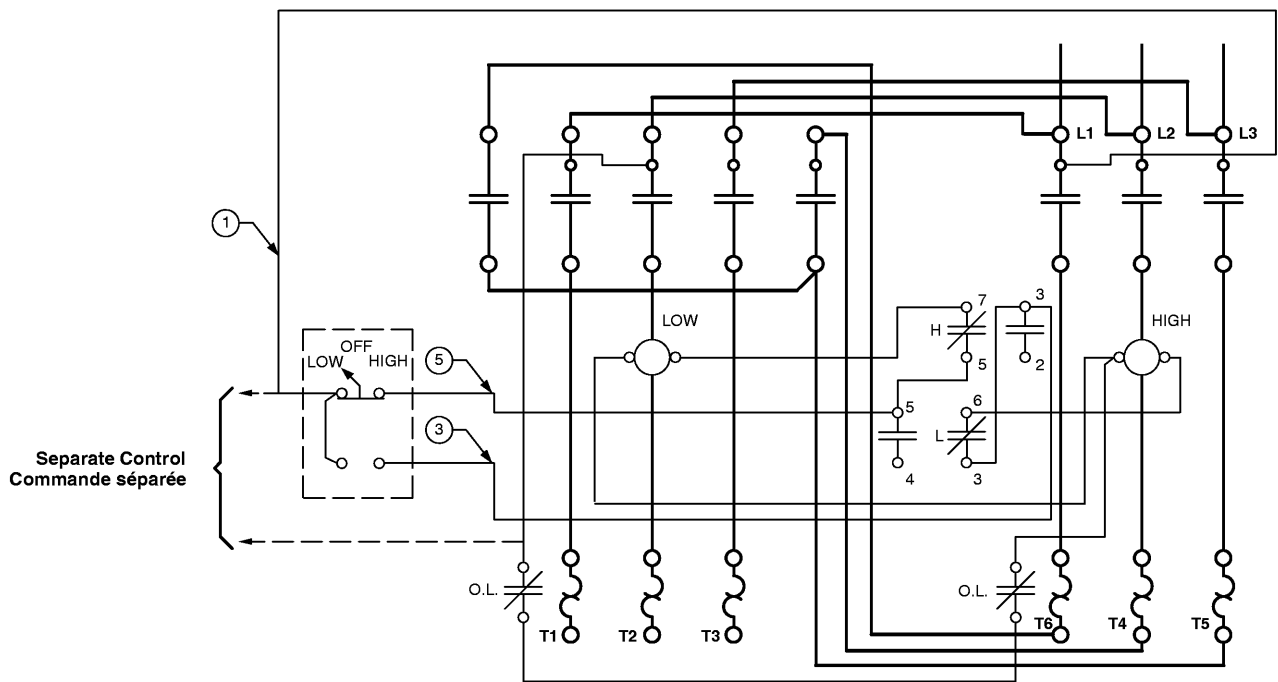
MOTOR TERMINAL MARKINGS
MARQUAGE DU TERMINAL DU MOTEUR



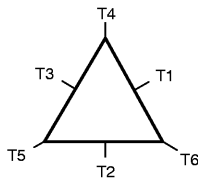
CONNECTIONS MADE BY CONTROLLER CONNEXIONS PAR AUTOMATE			
SPEED VITESSE	SUPPLY LINES LIGNES D'ALIMENTATION L1 L2 L3	OPEN OUVERT	TOGETHER ENSEMBLE
LOW	T1 T2 T3	T4 T5 T6	NONE
HIGH	T6 T4 T5	NONE	T1 T2 T3



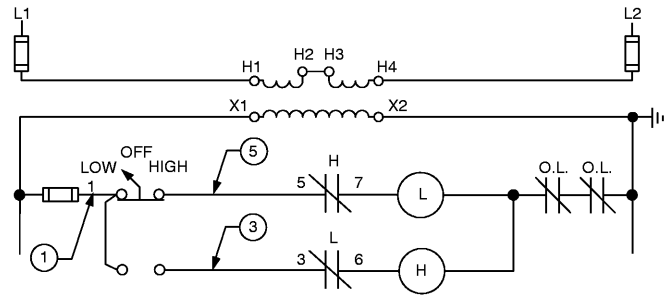
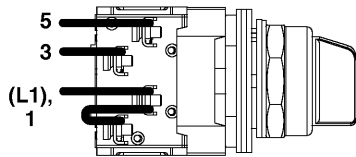
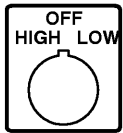
Common or Separate Control for Bulletin 520G Multi-speed Controller, 2-Speed Consequent Pole-Constant Horsepower
Commande centrale ou séparée pour processeur à vitesses multiples de Bulletin 520G, constante à pôle conséquent à deux vitesses, hp constant



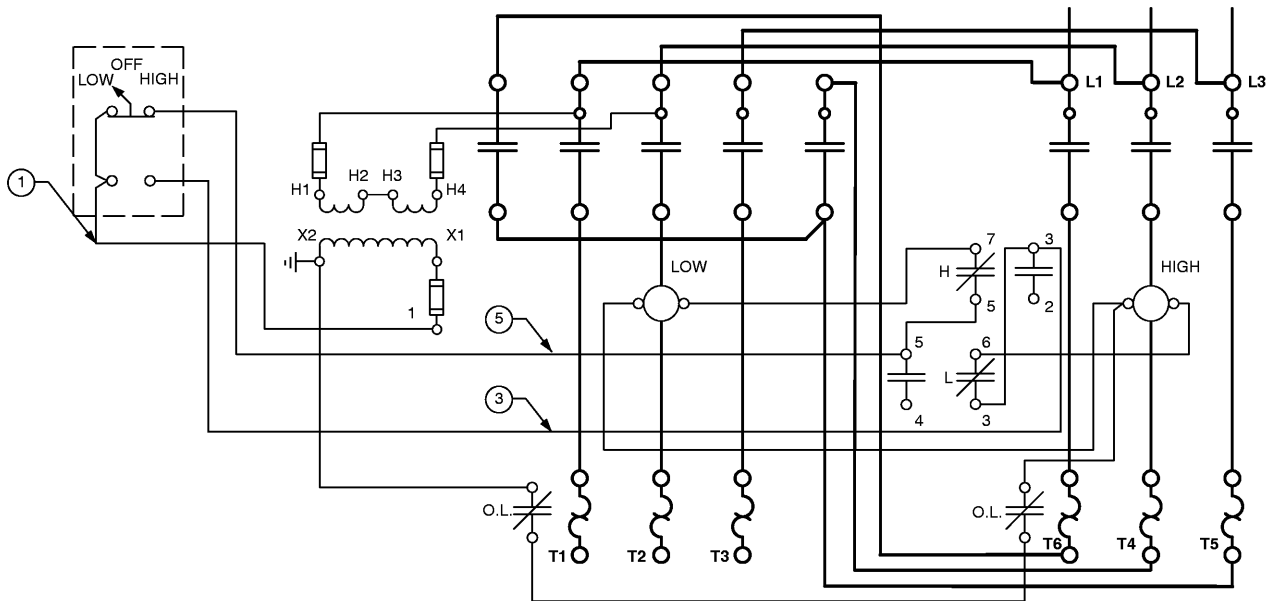
MOTOR TERMINAL MARKINGS
MARQUAGE DU TERMINAL DU MOTEUR



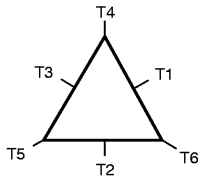
CONNECTIONS MADE BY CONTROLLER CONNEXIONS PAR AUTOMATE			
SPEED VITESSE	SUPPLY LINES LIGNES D'ALIMENTATION		TOGETHER ENSEMBLE
	L1	L2 L3	
LOW	T1 T2 T3	NONE	T4 T5 T6
HIGH	T6 T4 T5	T1 T2 T3	NONE



**Transformer Control for Bulletin 520G Multi-speed Controller, 2-Speed Consequent Pole-Constant Horsepower
 Commande par transformateur pour processeur à vitesses multiples de Bulletin 520G, constante à pôle conséquent
 à deux vitesses, hp constant**



**MOTOR TERMINAL MARKINGS
 MARQUAGE DU TERMINAL DU MOTEUR**



CONNECTIONS MADE BY CONTROLLER CONNEXIONS PAR AUTOMATE			
SUPPLY LINES LIGNES D'ALIMENTATION			
SPEED VITESSE	L1 L2 L3	OPEN OUVERT	TOGETHER ENSEMBLE
LOW	T1 T2 T3	NONE	T4 T5 T6
HIGH	T6 T4 T5	T1 T2 T3	NONE