

# BULLETIN 800T INSTALLATION AND MOUNTING INSTRUCTIONS

for Standard and Jumbo Mushroom Head Push Buttons

This device is for use on a flat, smooth surface of a NEMA Type 4 or 13 enclosure.

**WARNING:** To prevent injury, this device must be disconnected from all power sources prior to initiating work.

**CAUTION:** When installing in a metal enclosure, maintain 1/2" (12.7) min. clearance between exposed metal parts of contact block and enclosure.

## INSTALLATION

1. Place the unit (less mushroom head, mounting ring, thrust washer, legend plate) with proper number of gaskets per Figure 1 on mounting hole.
2. Install legend plate (if legend plate is not used, install trim washer). Use legend plate with notch instead of tang, (800T-X500 and X600 Series).
3. Install thrust washer and mounting ring. (45 LB.-IN.)
4. Install and tighten mushroom head. (15 LB.-IN.)
5. Tighten set screw in stem or mushroom head. See Figure 2 for illustrated assembly. (8 LB.-IN.)

A device bonding kit, Catalog No. 800T-N300 is available to meet the bonding requirements of CSA Standard C22.2 No.0.4.

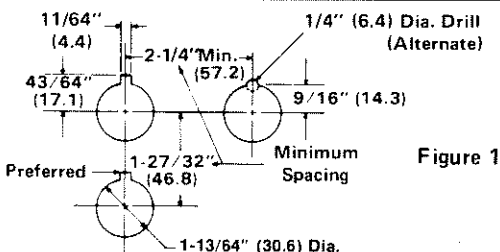


Figure 1

### Number of Gaskets to be Mounted on Bushing behind Panel for various Panel Thicknesses.

1/16" (1.6)	3	
1/8" (3.2)	2	
3/16" (4.8)	1	

Panels thicker than 3/16" (4.8) must be counterbored.

**NOTE:** Dimensions shown in parentheses are in millimeters.

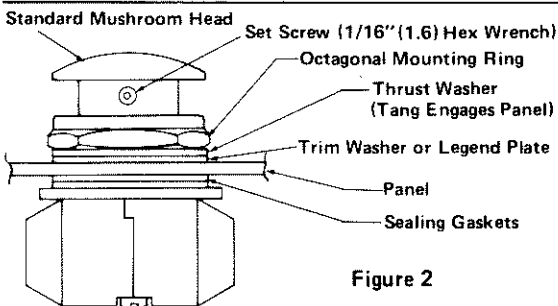
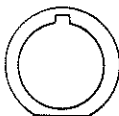


Figure 2

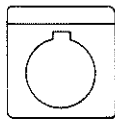


Thrust Washer



Trim Washer

or



Legend Plate