

PowerMonitor 1000 Unit Firmware Revision Update

Catalog Numbers 1408-BC3, 1408-TS3, 1408-EM3

Topic	Page
Access Product Firmware Revision	3
Update the Device Firmware Revision with the ControlFLASH Software Utility	8

This publication provides instructions for updating the firmware revision for the PowerMonitor™ 1000 unit.

IMPORTANT Before starting, verify that the appropriate network connections are made and that a driver for the network is configured in RSLinx® Classic software.

Important User Information

Read this document and the documents listed in the additional resources section about installation, configuration, and operation of this equipment before you install, configure, operate, or maintain this product. Users are required to familiarize themselves with installation and wiring instructions in addition to requirements of all applicable codes, laws, and standards.

Activities including installation, adjustments, putting into service, use, assembly, disassembly, and maintenance are required to be carried out by suitably trained personnel in accordance with applicable code of practice.

If this equipment is used in a manner not specified by the manufacturer, the protection provided by the equipment may be impaired.

In no event will Rockwell Automation, Inc. be responsible or liable for indirect or consequential damages resulting from the use or application of this equipment.

The examples and diagrams in this manual are included solely for illustrative purposes. Because of the many variables and requirements associated with any particular installation, Rockwell Automation, Inc. cannot assume responsibility or liability for actual use based on the examples and diagrams.

No patent liability is assumed by Rockwell Automation, Inc. with respect to use of information, circuits, equipment, or software described in this manual.

Reproduction of the contents of this manual, in whole or in part, without written permission of Rockwell Automation, Inc., is prohibited.

Throughout this manual, when necessary, we use notes to make you aware of safety considerations.



WARNING: Identifies information about practices or circumstances that can cause an explosion in a hazardous environment, which may lead to personal injury or death, property damage, or economic loss.



ATTENTION: Identifies information about practices or circumstances that can lead to personal injury or death, property damage, or economic loss. Attentions help you identify a hazard, avoid a hazard, and recognize the consequence.

IMPORTANT

Identifies information that is critical for successful application and understanding of the product.

Labels may also be on or inside the equipment to provide specific precautions.



SHOCK HAZARD: Labels may be on or inside the equipment, for example, a drive or motor, to alert people that dangerous voltage may be present.



BURN HAZARD: Labels may be on or inside the equipment, for example, a drive or motor, to alert people that surfaces may reach dangerous temperatures.

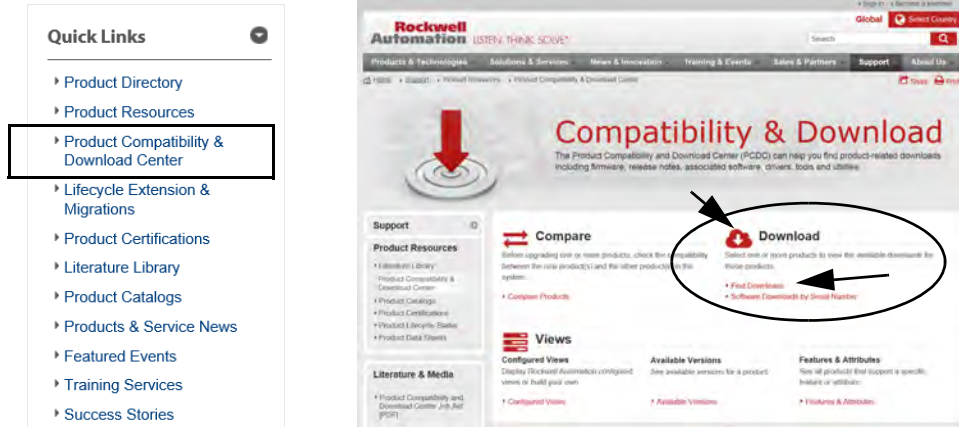


ARC FLASH HAZARD: Labels may be on or inside the equipment, for example, a motor control center, to alert people to potential Arc Flash. Arc Flash will cause severe injury or death. Wear proper Personal Protective Equipment (PPE). Follow ALL Regulatory requirements for safe work practices and for Personal Protective Equipment (PPE).

Access Product Firmware Revision

All PowerMonitor 1000 firmware release notes are available online with the Product Compatibility and Download Center.

1. From the Quick Links list on <http://www.ab.com>, choose Product Compatibility and Download Center.



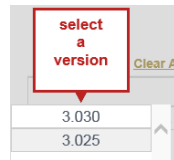
2. From the Product Compatibility and Download Center, select Download or Find Downloads and search for and choose your product.

Start by selecting products

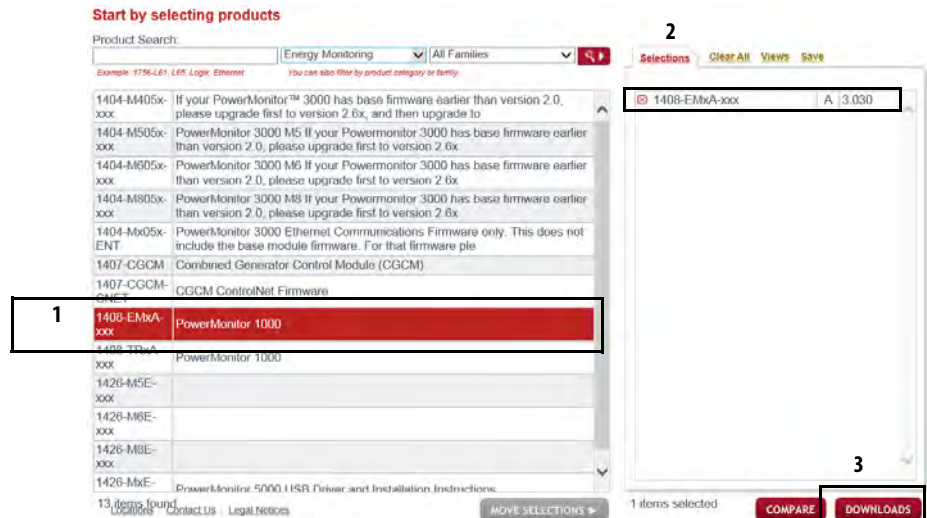



3. Select the device catalog number (1).
4. Select the desired version from the Selections tab (2).

The available versions are shown.



5. When the correct catalog number appears on the Selections tab (2), click Downloads (3).



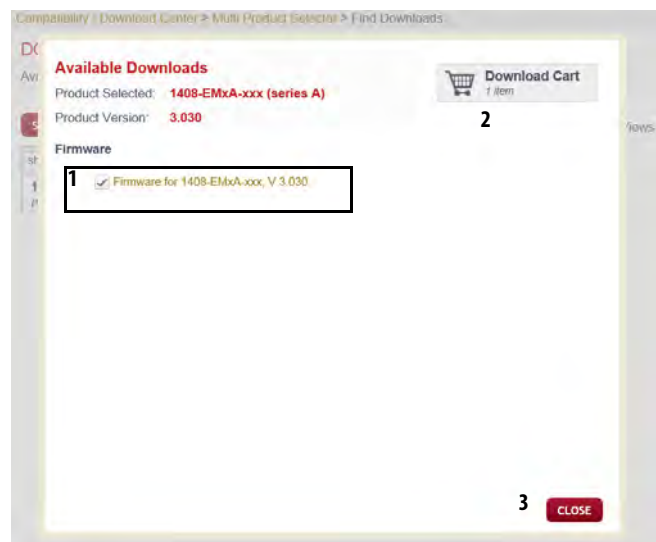
6. Under Downloads, click  .



7. Click the checkbox for the firmware update link (1).

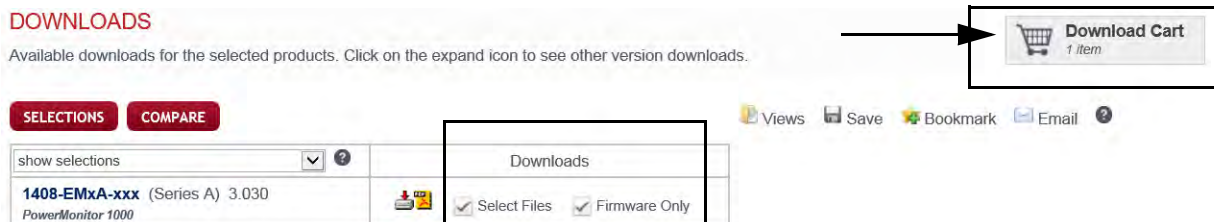
One item is added to the Download Cart (2).

8. Click Close in the Available Downloads dialog box (3).

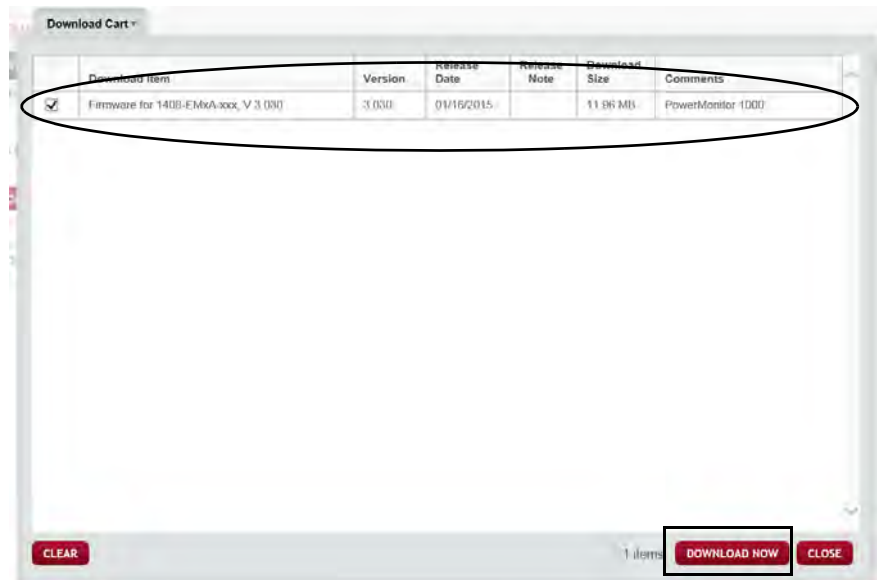


9. Verify the selected downloads (1).

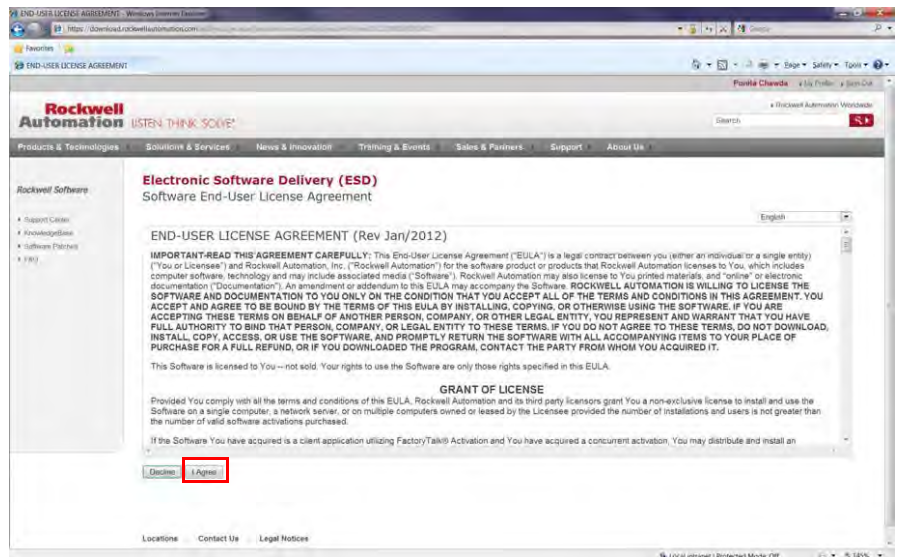
10. Click Download Cart.



- Verify that the correct firmware revision is in the Download Cart and click Download Now.



- After reading the Software End-User License Agreement, click I Agree.



13. Click Managed Download.

Rockwell Automation now offers two download methods from which to choose. Your download includes [2] files. You can manually download these files using the direct download method, or you can use our download manager to download the files for you

Managed Download

Direct Download

Benefits of managed download

- Secure
- Verify file integrity
- Automatically resume download file if error occurs due to lost connections, network problems, computer shutdowns, or unexpected power outages

Use your browser or third party download manager. Rockwell Automation is not responsible for the file integrity of your download.

General Information

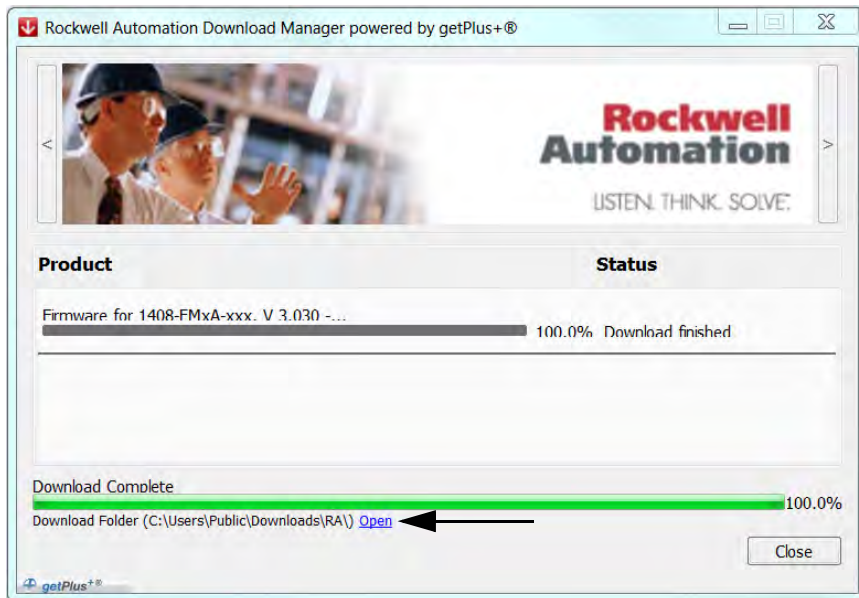
Technical Support

The Rockwell Automation electronic software delivery service uses a managed download process to ensure fast and reliable delivery of software products. This service includes:

- A global network of high-speed Internet servers
- An advanced download manager that is capable of downloading multiple items simultaneously
- A sophisticated file compression algorithm that reduces the footprint of some products by 60% or more

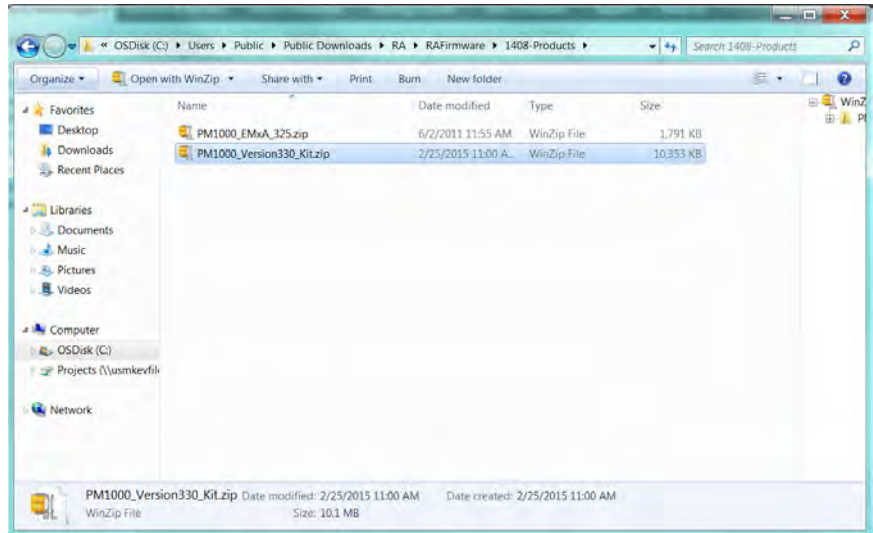
The download box opens.

14. Once the download is complete, click Open to open the Download folder.



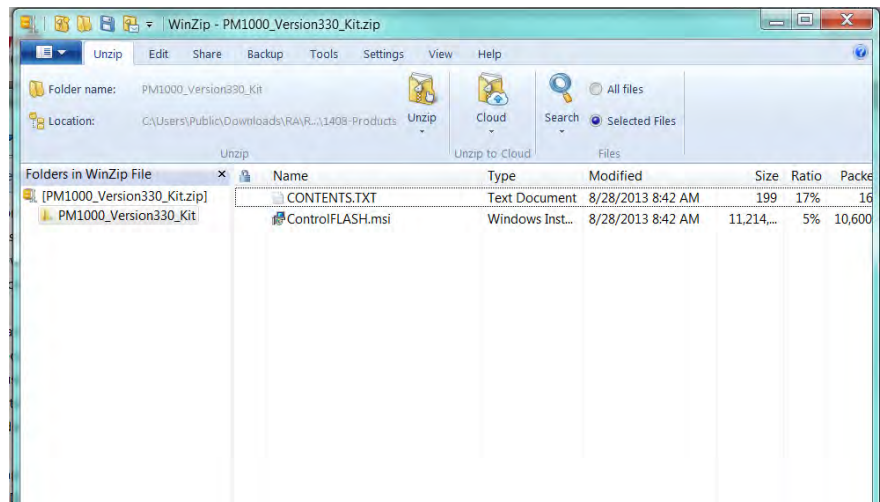
15. In the download folder, double-click the RAFirmware folder then double-click the 1408 Products folder.
16. Open the WinZip Kit file in the 1408-Products folder by double-clicking the Kit WinZip file.

This example shows the PM1000_Version330_Kit.zip file.

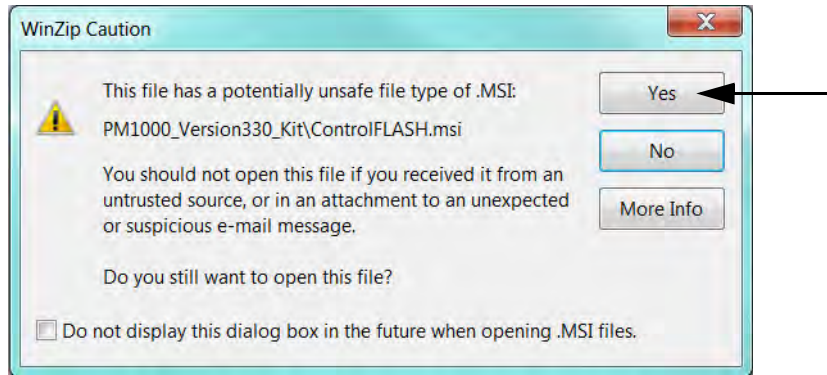


17. Open the Windows Installer Package file in the WinZip folder by double-clicking the file with the 'msi' extension.

This example shows the Windows Installer Package file ControlFLASH.msi.



18. In the WinZip Caution dialog box, click Yes.



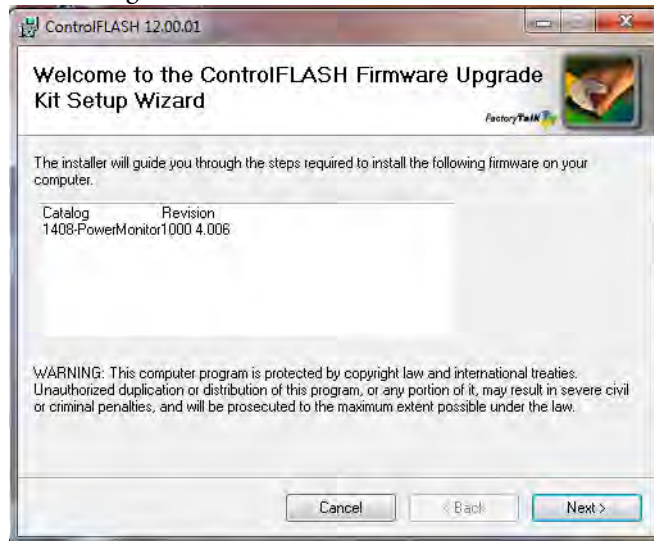
The ControlFLASH™ software utility opens.

Directions on updating the firmware revision are found in the [Update the Device Firmware Revision with the ControlFLASH Software Utility](#) section.

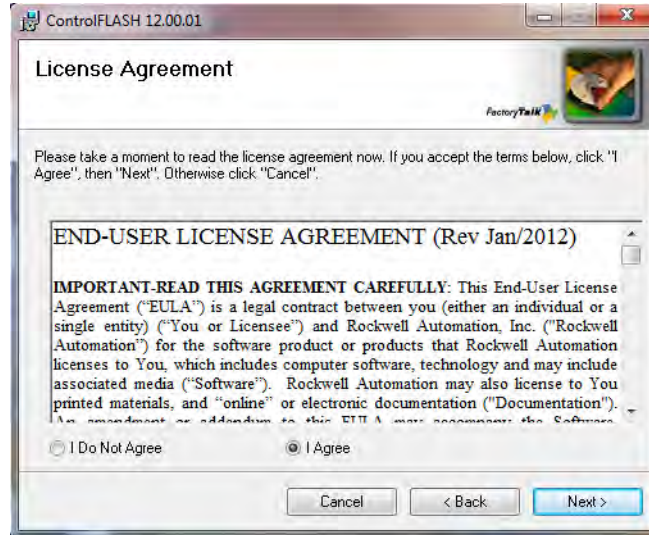
Update the Device Firmware Revision with the ControlFLASH Software Utility

When updating the firmware revision, refer to the [Access Product Firmware Revision](#) section for instructions on how to obtain the latest firmware revision from the Rockwell Automation download center.

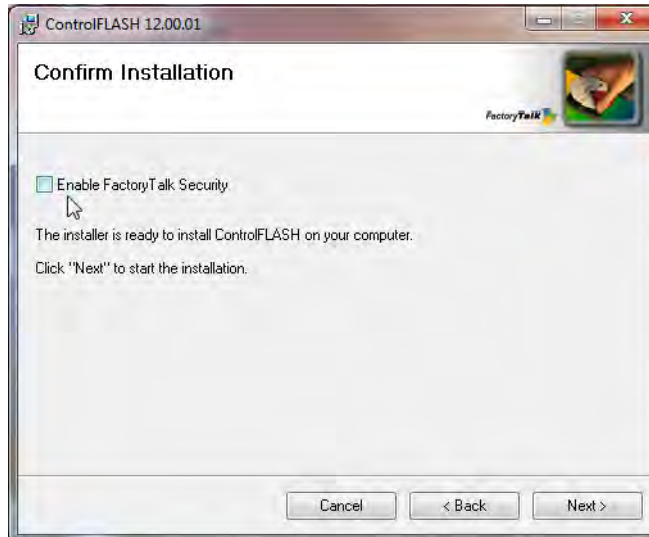
1. In the Welcome to the ControlFLASH Firmware Upgrade Kit Setup Wizard dialog box, click Next.



2. After reviewing the End-User License Agreement click I Agree and click Next.

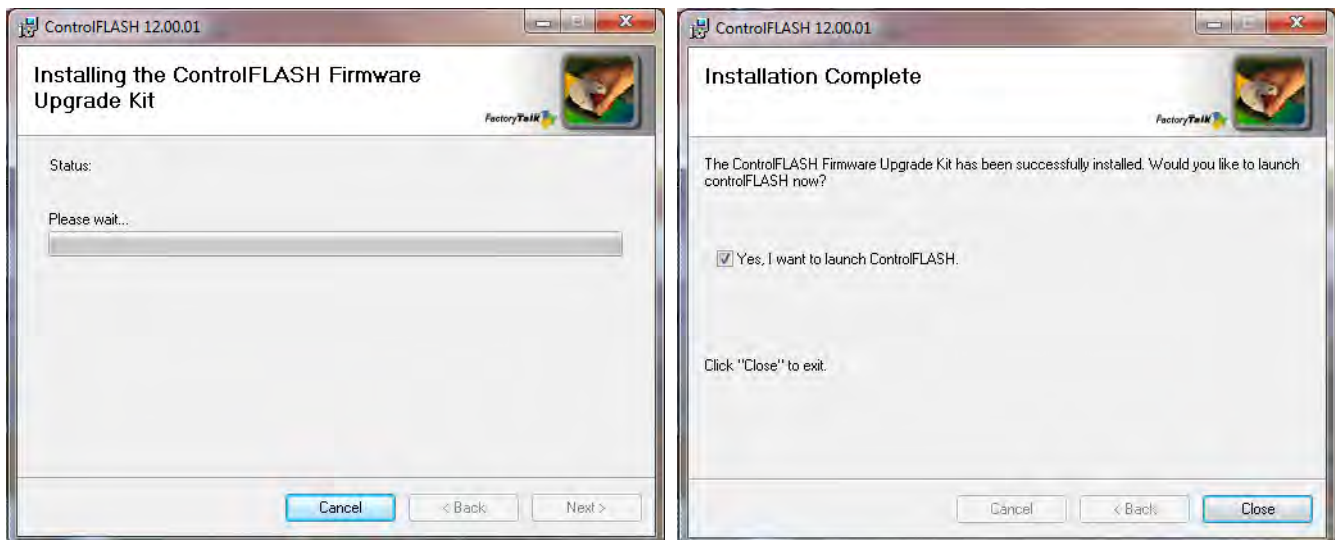


3. In the Confirm Installation dialog box, make sure the Enable FactoryTalk® Security checkbox is clear and click Next.



The ControlFLASH Firmware Upgrade Kit installs.

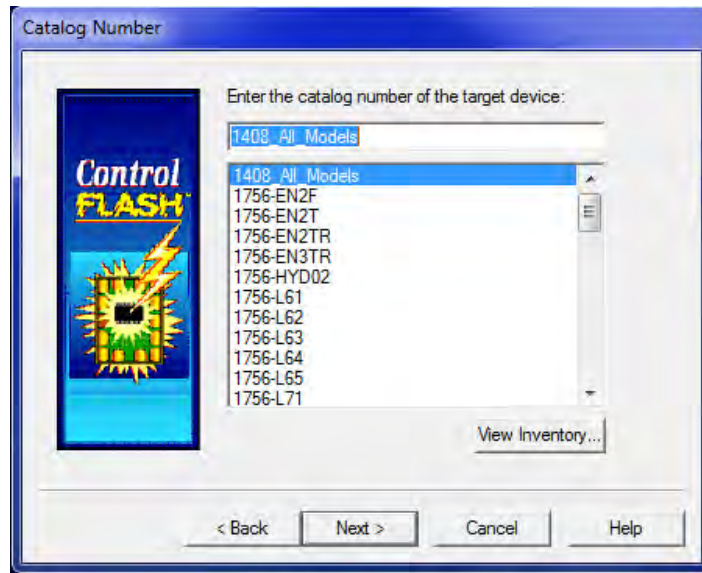
4. Once the kit is installed, check Yes, I want to launch ControlFLASH and click Close.



5. On the Welcome to ControlFLASH dialog box, click Next.

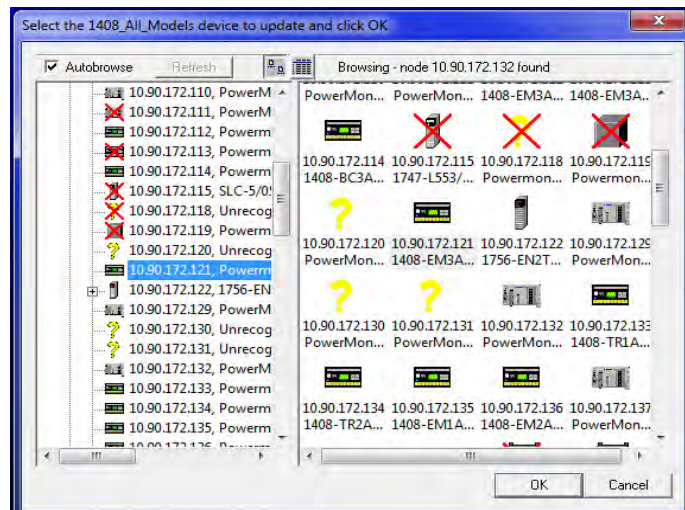


6. Select the 1408_All_Models from the menu, and click Next.

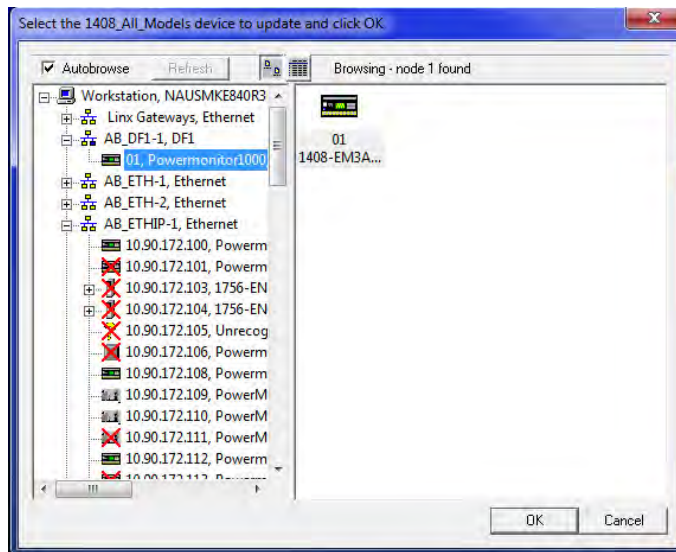


7. In RSLinx software, navigate to the IP address of the device over the Ethernet network, select the device, and click OK.

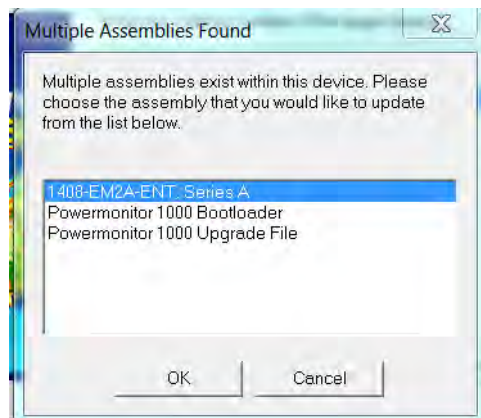
- TIP** RSLinx Classic Lite software must be installed to continue with the upgrade process.
- TIP** To access the device IP address, the IP address must be added to the Ethernet device-driver address list in RSLinx software.



A DF1 Driver can also be used to upgrade the PowerMonitor 1000 unit.



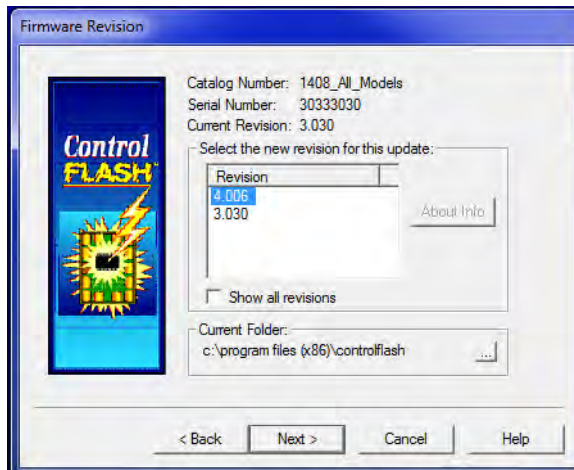
8. If prompted to select an assembly, select the 1408 catalog number for the list and click OK.



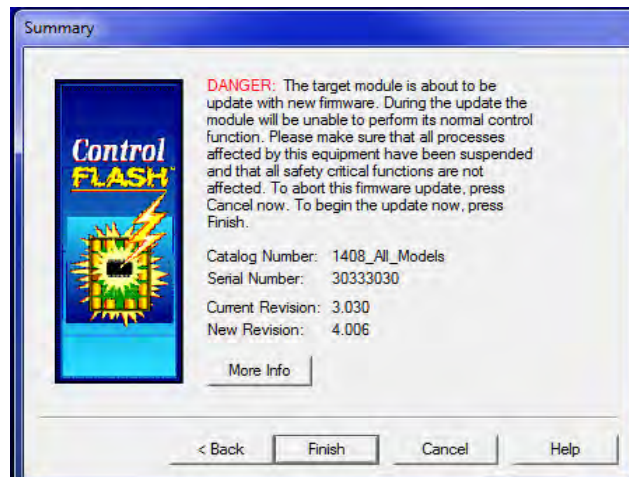
9. Select the new firmware revision number of the device and click Next.

TIP For the ControlFLASH software utility, version 12 or later, the firmware revision has the following format, 3.xxx. Therefore, firmware revision 3.30 appears as 3.030 in the ControlFLASH software utility.

TIP Any current version can be updated to revision 4.010. Once a PowerMonitor unit has been updated to firmware revision 4.010, it can no longer revert to a firmware revision before 4.010.



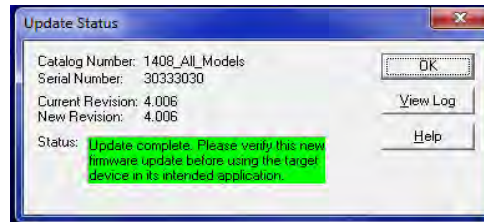
10. On the Summary dialog box, click Finish.



- On the dialog box regarding updating the target device, click Yes.



- On the Update Status dialog box, click OK to confirm that the update is complete.



- Check the device web page to confirm that the firmware revision is updated correctly.
- Exit the ControlFLASH software utility.

Additional Resources

These documents contain additional information concerning related products from Rockwell Automation.

Resource	Description
PowerMonitor 1000 Unit User Manual, publication 1408-UM002	Provides installation instructions, wiring diagrams, configuration, and specifications for PowerMonitor 1000 units.
Product Certifications website, http://www.ab.com	Provides declarations of conformity, certificates, and other certification details.

You can view or download publications at <http://www.rockwellautomation.com/literature/>. To order paper copies of technical documentation, contact your local Allen-Bradley distributor or Rockwell Automation sales representative.

Rockwell Automation maintains current product environmental information on its website at <http://www.rockwellautomation.com/rockwellautomation/about-us/sustainability-ethics/product-environmental-compliance.page>.

Allen-Bradley, Rockwell Software, Rockwell Automation, PowerMonitor, RSLinx Classic, FactoryTalk, and ControlFLASH are trademarks of Rockwell Automation, Inc. Trademarks not belonging to Rockwell Automation are property of their respective companies.

Rockwell Otomasyon Ticaret A.Ş., Kar Plaza İş Merkezi E Blok Kat:6 34752 İçerenköy, İstanbul, Tel: +90 (216) 5698400

www.rockwellautomation.com

Power, Control and Information Solutions Headquarters

Americas: Rockwell Automation, 1201 South Second Street, Milwaukee, WI 53204-2496 USA, Tel: (1) 414.382.2000, Fax: (1) 414.382.4444
 Europe/Middle East/Africa: Rockwell Automation NV, Pegasus Park, De Kleetlaan 12a, 1831 Diegem, Belgium, Tel: (32) 2 663 0600, Fax: (32) 2 663 0640
 Asia Pacific: Rockwell Automation, Level 14, Core F, Cyberport 3, 100 Cyberport Road, Hong Kong, Tel: (852) 2887 4788, Fax: (852) 2508 1846