



## 1336 PLUS II Fan Replacement Frames B & C

This publication will guide you through fan replacement on Frames B & C of the 1336 PLUS II AC Drive.

### Kit Contents

- Fan with leads
- Connector with leads
- Sealant
- Splice (2)
- Grommet

### Fan Replacement



**ATTENTION:** This drive contains ESD (Electrostatic Discharge) sensitive parts and assemblies. Static control precautions are required when installing, testing, servicing or repairing this assembly. Component damage may result if ESD control procedures are not followed. If you are not familiar with static control procedures, reference A-B publication 8000-4.5.2, “Guarding Against Electrostatic Damage” or any other applicable ESD protection handbook.

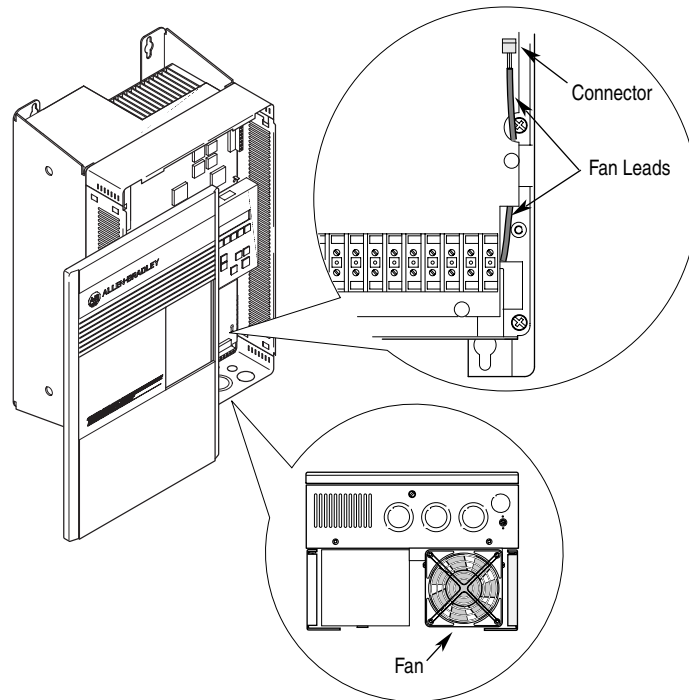


**ATTENTION:** To avoid a shock hazard, assure that all power to the drive has been removed before proceeding. In addition, verify that the DC bus has discharged by measuring across the “+DC” and “-DC” terminals of TB1 with a voltmeter. The voltage should be 0.0VDC.

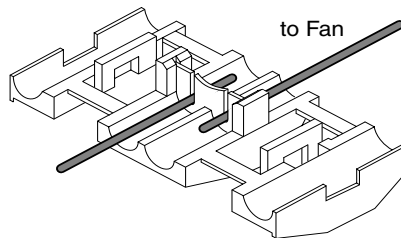
---

1. Remove and lock-out all incoming power to the drive. Remove/open the drive cover.
2. Using figure 1, locate the fan and attached wires. Note wire routing.
3. Remove the fan connector from the chassis. Cut the wire approximately 25.4 mm (1 in.) from the connector. Discard wire and connector.
4. Remove the four screws securing the fan guard to the heatsink. Set the fan guard and screws aside. Remove and discard the fan and wires.
5. Install the supplied grommet in the opening for the fan wires.
6. Locate the replacement fan. Route the fan wires as noted earlier. Using the screws previously removed, secure the fan and fan guard.

**Important:** Verify that the air flow arrow on the fan points to the top of the drive.

**Figure 1 Fan Location**

7. Using the supplied splice, join the fan leads together as follows:
  - a. Insert red wires in splice cover, overlapping ends slightly.



- b. Close cover (keeping wires in position) and squeeze with pliers until cover is locked.
  - c. Repeat for black wires.
8. Install fan connector. Apply supplied sealant to wires at the chassis hole.
9. Apply drive power and verify fan operation. Ensure that air is moving towards the top of the drive.

[www.rockwellautomation.com](http://www.rockwellautomation.com)

### Power, Control and Information Solutions Headquarters

Americas: Rockwell Automation, 1201 South Second Street, Milwaukee, WI 53204-2496 USA, Tel: (1) 414.382.2000, Fax: (1) 414.382.4444

Europe/Middle East/Africa: Rockwell Automation, Vorstlaan/Boulevard du Souverain 36, 1170 Brussels, Belgium, Tel: (32) 2 663 0600, Fax: (32) 2 663 0640

Asia Pacific: Rockwell Automation, Level 14, Core F, Cyberport 3, 100 Cyberport Road, Hong Kong, Tel: (852) 2887 4788, Fax: (852) 2508 1846