



Allen-Bradley 1333 Series D Main Control Board

Installation Instructions

ESD Precautions



ATTENTION: This board and the Bulletin 1333 contains parts and sub-assemblies that are sensitive to electrostatic discharge. Static control precautions are required when servicing the drive or handling the board. Component damage may result if you ignore electrostatic discharge control procedures. If you are not familiar with static control procedures, reference Allen-Bradley Publication 8000-4.5.2, Guarding Against Electrostatic Damage, or any other applicable ESD protection handbook.

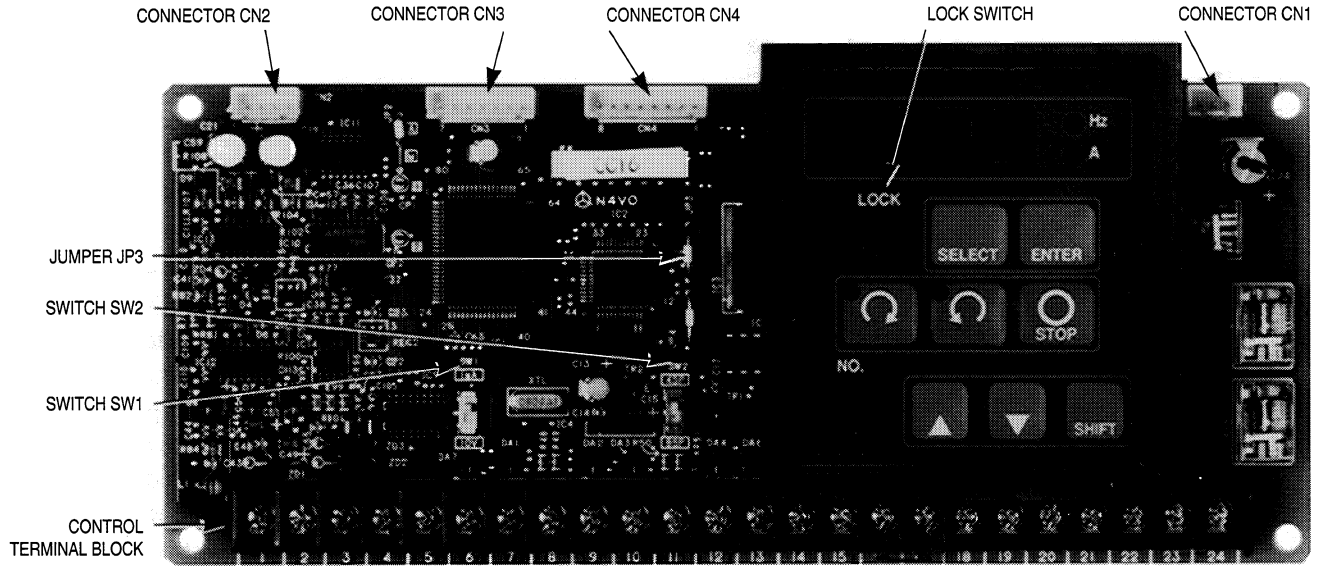
Safety Precautions



ATTENTION: Some printed circuit boards and drive components may contain hazardous voltage levels. If the DC bus neon light is lit, hazardous voltages are present in the drive. Remove and lock out power before you attempt board removal or installation. Failure to do so may result in electric shock or equipment damage. Bus voltage may be verified by using a voltmeter and measuring the voltage between the + Bus and – Bus terminals at the Power Terminal Block. Do not attempt to service the drive until the LED is extinguished and bus voltage has discharged to zero volts.

Installation Data
1333 Series D Main Control Board

Installing the 1333 Series Main Control Board



Important: Before proceeding, ensure that all field parameter settings as well as switch SW1 & SW2 settings have been recorded. Main Control Board replacement requires that field parameter settings and switch settings be re-entered.

Step 1 Remove and lockout all power to the drive.

Tag and disconnect all wires connected to the Control Terminal Block.

Tag and unplug connectors CN1-CN4.

Remove the (4) retaining screws holding the board in place.

Step 2 Unpack the new board and snip off Jumpers JP3 & JP4 as listed below.

Snip = ✂ Don't Snip = I

230V Model	JP3	JP4	460V Model	JP3	JP4
ZAA	I	I	AAB	✂	I
AAA	I	I	YAB	✂	I
YAA	I	I	BAB	✂	I
BAA	I	✂	CAB	✂	I
CAA	I	✂			
DAA	I	✂			
EAA	I	✂			
FAA	I	✂			
GAA	I	✂			

Step 3 Install the new board using the (4) retaining screws from Step 1.
Replug connectors CN1-CN4 into the board.

Calibrating the 1333 Series D Main Control Board

Before a 1333 Series D Main Control Board can be functional it must be calibrated for your drive rating. Calibration ensures that the output transistors are not turned on simultaneously causing the drive to trip.

Step 4 Short CP1 & CP2 on the Main Control Board. Reapply power and set the lock switch to enable drive programming. Access Parameter 00 and program it to a value detailed below.

230V Rating	Parameter 00 Setting	460V Rating	Parameter 00 Setting
ZAA	10	AAB	5
AAA	10	YAB	10
YAA	20	BAB	20
BAA	37	CAB	20
CAA	37		
DAA	60		
EAA	60		
FAA	100		
GAA	100		

Step 5 Remove and lockout all power to the drive. Reconnect all Control Terminal Block wires, then reset switches SW1 & SW2.

Set the lock switch to enable drive programming and reapply power. Reenter all field parameter settings. Verify drive operation as outlined in the Startup Chapter of your manual.



ALLEN-BRADLEY
A ROCKWELL INTERNATIONAL COMPANY

Allen-Bradley has been helping its customers improve productivity and quality for 90 years. We design, manufacture and support a broad range of control and automation products worldwide. They include logic processors, power and motion control devices, man-machine interfaces, sensors and a variety of software. Allen-Bradley is a subsidiary of Rockwell International, one of the world's leading technology companies.



With major offices worldwide.

Algeria • Argentina • Australia • Austria • Bahrain • Belgium • Brazil • Bulgaria • Canada • Chile • China, PRC • Colombia • Costa Rica • Croatia • Cyprus • Czech Republic • Denmark • Ecuador • Egypt • El Salvador • Finland • France • Germany • Greece • Guatemala • Honduras • Hong Kong • Hungary • Iceland • India • Indonesia • Israel • Italy • Jamaica • Japan • Jordan • Korea • Kuwait • Lebanon • Malaysia • Mexico • New Zealand • Norway • Oman • Pakistan • Peru • Philippines • Poland • Portugal • Puerto Rico • Qatar • Romania • Russia-CIS • Saudi Arabia • Singapore • Slovakia • Slovenia • South Africa, Republic • Spain • Switzerland • Taiwan • Thailand • The Netherlands • Turkey • United Arab Emirates • United Kingdom • United States • Uruguay • Venezuela • Yugoslavia

World Headquarters, Allen-Bradley, 1201 South Second Street, Milwaukee, WI 53204 USA, Tel: (1) 414 382-2000 Fax: (1) 414 382-4444