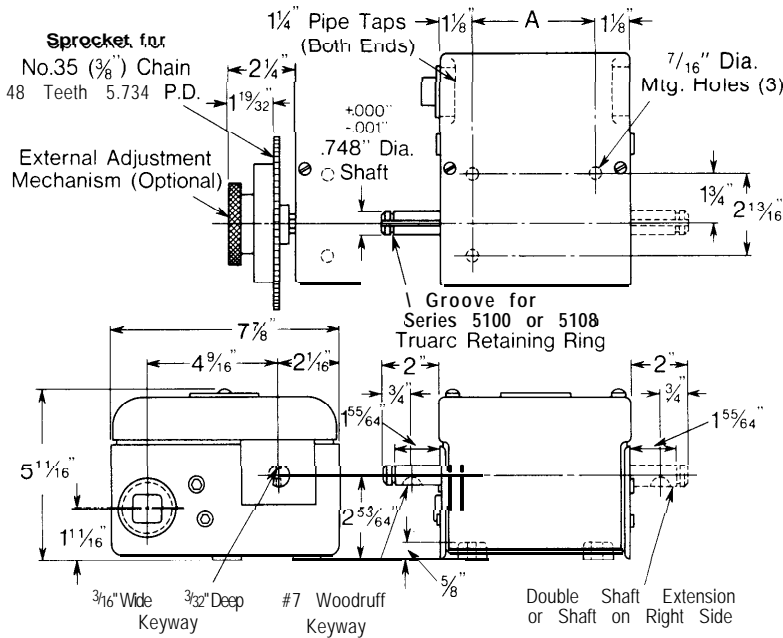


ROTATING CAM LIMIT SWITCHES

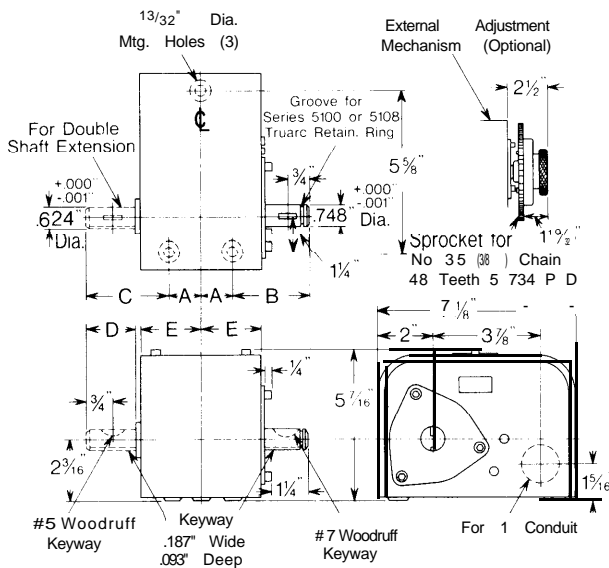
NEMA Type 1

Style A and B



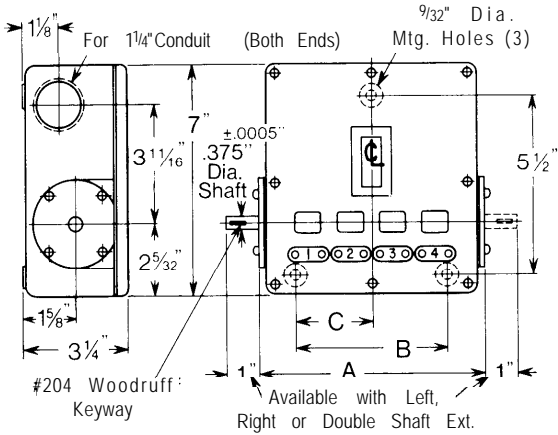
Catalog Number		No. of Circuits	Dimensions in Inches
Style A	Style B		A
803-A2	803-B2	2	4 ³ / ₈
A3	B3	3	
803-A4	803-B4	4	5 ¹ / ₁₆
803-A5	803-B5	5	8 ⁵ / ₁₆
		6	
803-A7	803-B7	7	12 ¹ / ₄
		8	
		9	
803-A10	803-B10	10	16 ³ / ₁₆
		11	
		12	

Style P



Catalog Number		Number of Circuits	Dimensions in Inches				
Style P			A	B	C	D	E
803-P2	803-PL2	2	1 ¹ / ₈	2 ³ / ₄	2 ⁷ / ₈	1 ¹ / ₂	2 ⁷ / ₃₂
803-P3	803-PL3	3	1 ³ / ₈	3 ¹³ / ₁₆	3 ¹⁵ / ₁₆	1 ¹ / ₂	3 ¹⁷ / ₃₂
		4					
803-P5	803-PL5	5	2 ¹¹ / ₁₆	3 ¹³ / ₁₆	3 ¹⁵ / ₁₆	1 ¹ / ₂	4 ²⁷ / ₃₂
		6					
803-P7	803-PL7	7	4	3 ¹³ / ₁₆	3 ¹⁵ / ₁₆	1 ¹ / ₂	6 ⁷ / ₃₂
P8	PL8	8					
803-P10	803-PL10	10	6 ⁵ / ₈	3 ¹³ / ₁₆	3 ¹⁵ / ₁₆	1 ¹ / ₂	8 ⁴⁹ / ₆₄
		P12					

NEMA Type 1 & 12 Style F

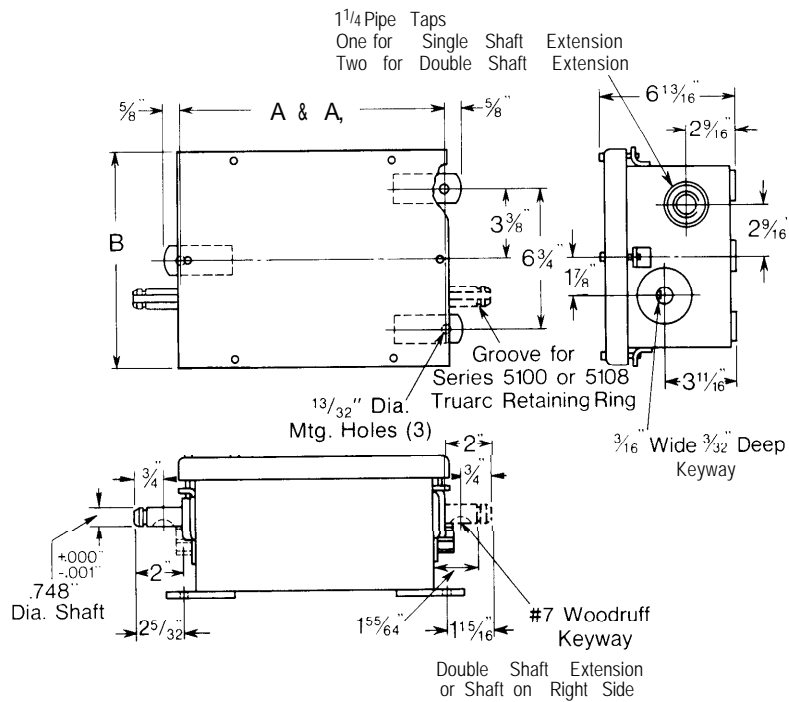


Catalog Number	Number of Circuits	Dimensions in Inches		
		A	B	C
Style F				
803-F212	2			
F312	3	7 ¹ / ₁₆	4 ¹³ / ₁₆	2 ¹³ / ₃₂
F412	4			
803-F512	5			
F612	6	12 ⁵ / ₁₆	10 ¹ / ₁₆	5 ¹ / ₃₂
F712	7			
F812	8			
803-F912	9			
F1012	10	17 ⁹ / ₁₆	15 ⁵ / ₁₆	7 ²¹ / ₃₂
F1112	11			
F1212	12			

NEMA Type 4 & 13 • NEMA Type 9 Style A and B

Catalog Number		No. of Circuits	Dimensions in Inches	
NEMA Type 4 & 13	NEMA Type 9		A	A ¹ (Double Shaft Extension)
803-A24	803-A29	2	9 ¹ / ₂	10 ⁹ / ₁₆
A34	A39	3		
803-A44	803-A49	4	10 ¹³ / ₁₆	11 ⁷ / ₈
803-A54	803-A59	5	13 ⁷ / ₁₆	14 ¹ / ₂
A64	A69	6		
803-A74	803-A79	7	17 ³ / ₈	18 ⁷ / ₁₆
A84	A89	8		
A94	A99	9		
803-A104	803-A109	10		
A114	A119	11	21 ⁵ / ₁₆	22 ³ / ₈
A124	A129	12		
Enclosure		Dimensions in Inches		
		B		
NEMA Type 4 & 13		10 ³ / ₄		
NEMA Type 9		11 ¹ / ₈		

¹ For Style B dimensions, substitute a "B" for the "A" in the listed catalog number.



Industrial Control Group
Milwaukee, Wisconsin 53204