



Endress+Hauser Process Training Unit (PTU)  
demonstrating PlantPAx distributed control system

### Customer success with EtherNet/IP

- 40% reduction in device commissioning
- 25% reduction in loop identification, device integration and process loop tuning
- Fastest update of measurement parameters needed for device control
- Immediate device recognition as a network node
- Transparency of the field devices from the production floor to the enterprise system

## Combined Strengths Deliver Real Customer Value

To meet your needs for complete process automation solutions, the Endress+Hauser and Rockwell Automation Strategic Alliance offers pre-engineered, pre-tested, supported and maintained solutions, combining best-in-class instrumentation, software and control systems.

Working with end users, process OEMs, system integrators, and engineering firms across many industries, we provide a fully functional, flexible and scalable process system with tested interoperability and value-add differentiation.

### Complimentary project expertise

- Core competencies from both companies produce scalable engineered solutions for a range of project sizes and industries
- Benefit from top-of-class measurement, automation, service and software applications

### Value-added integration

- Reduce risk, implementation time and integration costs by taking advantage of the interoperability-tested integration between Endress+Hauser instruments and the Rockwell Automation® PlantPAx® distributed control system
- Standardize on common interfaces and leverage open networking standards to help maximize your plant wide automation flexibility

### Advanced diagnostics with plant wide support

- Pre-engineered add-on instructions (AOIs) that leverage instrumentation intelligence to the control system and through the enterprise business system about the status of the process itself
- Pre-designed, configurable operator faceplates provide real-time access to instrument diagnostics and process health, resulting in faster troubleshooting and improved decision-making

### Collaborative lifecycle management

- Manage information about your instrumentation assets, optimize plant assets, and benefit from a complete life cycle management solution within the delivered system

## Reduce Risk with Proven Technologies

### Open Networking Standards

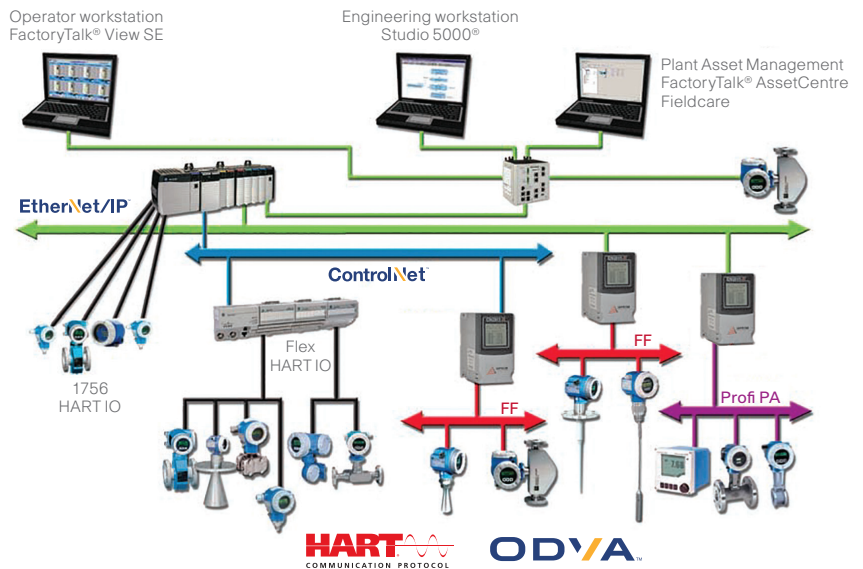
The integration between Endress+Hauser process instrumentation and the Rockwell Automation PlantPAx distributed control system focuses on open, standard technology at every level. Through recent investments in our EtherNet/IP offerings, we continue to collaborate to help you leverage actionable information from your instruments to make more informed business decisions.

## Integrate with EtherNet/IP

Using standard Ethernet for networking throughout your process automation system can help you solve critical business problems by allowing you to:

Access the data you need, providing business leaders a real-time view into your process automation system

- Capture your instrumentation data and leverage it across the production enterprise
- Facilitate critical analysis and reporting on production processes to identify potential and impending problems and improve overall performance



## Faster Time to Market

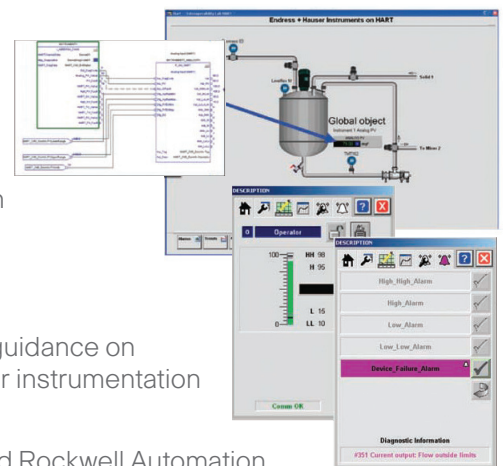
### Device Integration Tools

Leverage the power of process instrumentation with pre-engineered add-on instructions providing a two-way exchange of data between your faceplates and controller. Pre-designed, configured faceplates offer visualization of field instruments connected to the control system. Together these tools allow you timely access to actionable instrumentation diagnostics.

### Integration Documents

Our joint Integration Documents support implementation through step-by-step guidance on connectivity, configuration and commissioning for a full range of Endress+Hauser instrumentation in the PlantPAx system.

The interoperability testing is a verification that Endress+Hauser field devices and Rockwell Automation Integrated Architecture® systems perform together through completion of common test procedures by either party.



For more information, please visit:

[www.endress.com/rockwell](http://www.endress.com/rockwell)

[www.rockwellautomation.com/global/sales-partners/strategic-alliances/endress-hauser.page?](http://www.rockwellautomation.com/global/sales-partners/strategic-alliances/endress-hauser.page?)

Endress+Hauser is trusted by more than 100,000 customers to make their processes safe, efficient and environmentally friendly. We offer a range of measurement products, including level, flow, pressure, temperature, analytical and complete engineered solutions designed to help customers acquire, transmit, control and record process information needed to manage operations in a safe, reliable and profitable manner.

[www.endress.com/worldwide](http://www.endress.com/worldwide)

#### International:

Endress+Hauser  
Instruments International  
Kaegenstr. 2, CH-4153 Reinach/BL,  
Switzerland  
Tel: +41 61 715 81 00  
Fax: +41 61 715 25

#### Canada:

Endress+Hauser, Canada  
1075 Sutton Drive  
Burlington, ON L7L 5Z8  
Tel: (1) 905 681 9292  
Fax: (1) 905 681 9444

#### USA:

Endress+Hauser, Inc.  
2350 Endress Place,  
Greenwood, IN 46143  
Tel: (1) 317 535 7138  
Fax: (1) 317 535 8498

#### Mexico:

Endress+Hauser México, S.A. de C.V.  
Fernando Montes de Oca 21 Edif A Piso 3  
San Nicolás, 54030 Tlalnepantla,  
Edo de México  
Tel: +52 55 5321 2080  
Fax: +52 55 5321 2099

Rockwell Automation, Inc. (NYSE:ROK), the world's largest company dedicated to industrial automation, makes its customers more productive and the world more sustainable. Throughout the world, our flagship Allen-Bradley® and Rockwell Software® product brands are recognized for innovation and excellence.

[www.rockwellautomation.com/solutions/process](http://www.rockwellautomation.com/solutions/process)

#### Americas:

Rockwell Automation  
1201 South Second Street  
Milwaukee, WI 53204-2496 USA  
Tel: (1) 414.382.2000, Fax: (1) 414.382.4444

#### Asia Pacific:

Rockwell Automation  
Level 14, Core F, Cyberport 3  
100 Cyberport Road, Hong Kong  
Tel: (852) 2887 4788, Fax: (852) 2508 1846

#### Europe/Middle East/Africa:

Rockwell Automation  
NV, Pegasus Park, De Kleetlaan 12a  
1831 Diegem, Belgium  
Tel: (32) 2 663 0600, Fax: (32) 2 663 0640

Allen-Bradley, Integrated Architecture, PlantPAx, FactoryTalk, Rockwell Software and Studio 5000 are trademarks of Rockwell Automation, Inc.