

# PanelView™ Component



Component Level Of Human Machine Interface Solutions



LISTEN.  
THINK.  
SOLVE.™

 Allen-Bradley • Rockwell Software

**Rockwell  
Automation**

# PanelView Component

## FEATURES:

### Language Support & Switching

- Provide information in local language for operator and support personnel
- Display information in languages including Chinese, Portuguese, French, Italian, German, Spanish and Korean
- Configure numeric, date and time format for each locale
- Reduce the number of applications to support different locales

### Alarming

- Alert operators with alarm messages that include embedded variables
- Review alarm status, history and time/date of equipment events even after PanelView Component power is cycled

### Recipe

- Upload and download parameter settings with a single operation
- Save recipes in .csv format for backup or offline modification
- Allow operator to modify recipe parameter settings

### Communications

- Communicate to MicroLogix, Micro800 and SLC controllers via serial (RS232 or RS422/RS485) networks on all terminals, and Ethernet on the C400, C600 and C1000 displays
- Multi-vendor communications include Modbus, Modbus/TCP, and Siemens MPI

### New 4.3" TFT PanelView Component Terminal

- 64k Color Resolution
- Class 1 Div 2 certified
- Built-in Ethernet port



## PanelView Component

When you need an essential component, with added value, but with a reduced cost, look to the Allen-Bradley PanelView Component family of operator interfaces from Rockwell Automation. Leverage on the new features of PanelView Component, such as built-in programming software and integrated mounting clamps, to help improve productivity and maintenance, while enjoying the convenience and efficiencies of single-source buying. Preferred integration with Allen-Bradley MicroLogix™, Micro800™ and SLC™ 500 families of programmable logic controllers offers you an ideal control and visualization solution for a wide variety of applications. PanelView Component offers the fundamental features on a full line of displays ranging from 2" to 10", in a compact and easy-to-understand package.

## Connected Components

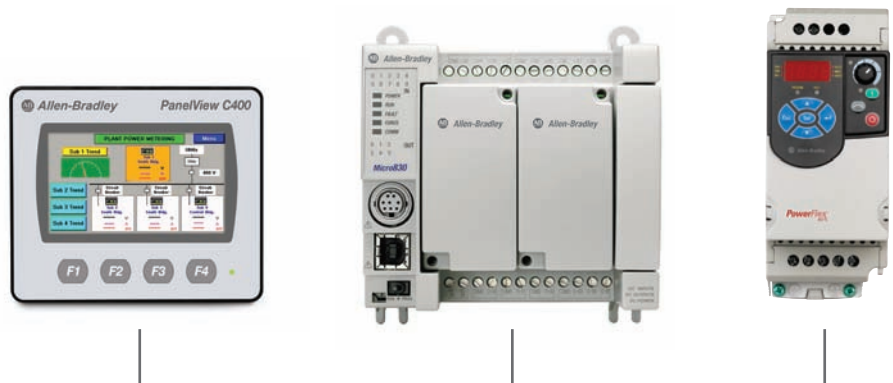
Part of the Machine Control Solutions offering from Rockwell Automation, Connected Components is a preferred control solution for machine builders who provide stand-alone machines at a low cost.

Just enough control  
Simple connectivity  
Simplified engineering  
Faster start-up  
Enhanced diagnostics  
Low cost

Unlike other control systems, Connected Components gives you "just enough" control to help meet machine and customer requirements, while improving your operating efficiencies. PanelView Component is part of the visualization suite of products from Rockwell Automation ranging from message displays to industrial computers and monitors.

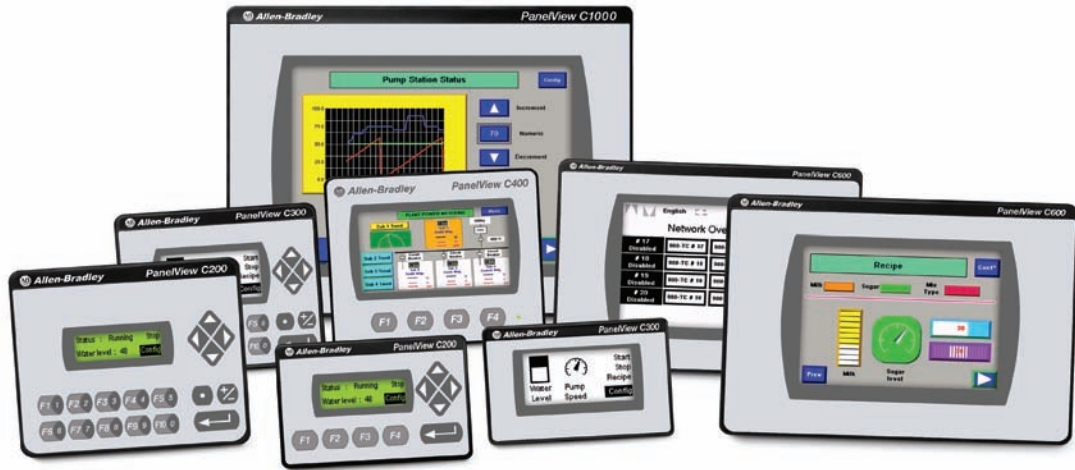
Rockwell Automation offers machine builders a full range of solutions, from cost-effective components to highly integrated systems. Each of these easily implemented solutions helps you accelerate the time to market and lower total cost to design, develop and deliver your machine.

PanelView Component is ideally suited within a MicroLogix or Micro800-based Connected Components solution:



Serial or Ethernet Network

# PanelView Component At-A-Glance



## C200

- 4 Function keys or combination of numeric/function keys
- 2" monochrome, graphic display
- Serial communication



## C300

- Touch screen or combination of numeric/function keys
- 3" monochrome, graphic display
- Serial communication



## C400

- 4 Function keys and touch screen
- 4.3" TFT color display
- Serial and Ethernet communication
- Class 1 Division 2 certified



## C600

- Touch screen
- 6" monochrome or TFT color display
- Serial and Ethernet communication



## C1000

- Touch screen
- 10" TFT color display
- Serial and Ethernet communication

# Software At-A-Glance

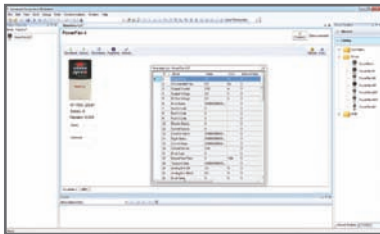
## Connected Components Workbench Software

Connected Components Workbench is a free software platform supporting Allen-Bradley HMI, component-class drives, motion products and Micro800 controllers in your small machine



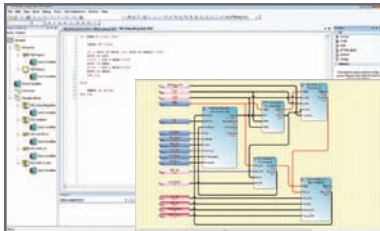
### Device Configuration

- Common environment for:
  - Micro800 controller
  - PanelView Component operator interface
  - PowerFlex 4-class drive
  - Additional connected component products forthcoming
- Simple to install
- Simple connectivity to select devices via standard USB communication
- Graphical controller configuration rather than property dialog(s)



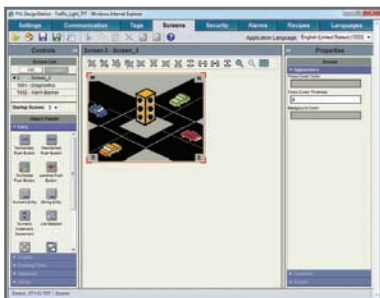
### Programming

- Extensive use of Microsoft and IEC-61131 standards
- Value add through Rockwell Automation and user defined function blocks
- Structured Text, Ladder Diagram and Function Block editors that support symbolic addressing











## DesignStation

PanelView Component software (DesignStation) is an offline programming software offering better user experience with significant DesignTime performance improvement



- Features include unicode language switching, alarm messages and history, and basic recipe capability
- User Interface remains unchanged (Web browser)
- Platform selection and Application version display on Dashboard
- Support IE7 and IE8

## PanelView Component Specifications

Type	PanelView C200		PanelView C300		PanelView C400	PanelView C600		PanelView C1000
								
Catalog Number	2711C-F2M	2711C-K2M	2711C-T3M	2711C-K3M	2711C-T4T	2711C-T6M	2711C-T6T	2711C-T10C
<b>DISPLAY</b>								
Size (mm)	2" (49 x 14)		3" (67 x 33)		4.3" (95 x 54)	5.7" (115 x 86)		10.4" (211 x 158)
Resolution (pixels)	122 x 32		128 x 64		480 x 272	320 x 240		640 x 480
Type	Monochrome Transflective STN				Color Transmissive TFT	Monochrome Transmissive FSTN	Color Transmissive TFT	
Operator Input	4 Function Keys	Combination Function/ Numeric Keys	Analog Touch	Combination Function/ Numeric Keys	4 Function Keys & Analog Touch	Analog Touch		
<b>ELECTRICAL</b>								
Communication Port	RS232 (9 pin D-Shell), RS422/RS485 (Connector)				RS232 (9 pin D-Shell), RS422/RS485 (Connector), Ethernet			
Programming Port	USB device port				USB device port, Ethernet			
Real Time Clock	No battery backup				Battery-backed			
Power Requirements	18...30V DC, C200 and C300 5W				18...30V DC, C400 3.5W, C600 10W, C1000 18W			
<b>ENVIRONMENTAL</b>								
Operating Temperature	0...50°C							
Enclosure	NEMA/UL Type 4X (indoor) 12, 13, and IEC IP54, IP65							
Certifications	cULus Listed; CE marked; C-Tick				cULus Listed; CE marked; C-Tick; Class 1 Div 2	cULus Listed; CE marked; C-Tick		
<b>MECHANICAL</b>								
Mounting Mechanism	Integrated Clamps				Quick Lever Clips	Integrated Clamps & Quick Lever Clips		Quick Lever Clips
Weight	0.2 kg	0.3 kg	0.2 kg	0.3 kg	0.35 kg	0.7 kg		1.6 kg
Dimensions Overall (H x W x D, mm)	80 x 116 x 54	119 x 139 x 55	80 x 116 x 57	119 x 139 x 55	113 x 138 x 43	154 x 209 x 57		250 x 308 x 54
Cutout Dimensions (mm)	64 x 99	99 x 119	64 x 99	99 x 119	99 x 119	135 x 189		231 x 289

Allen-Bradley and PanelView are trademarks of Rockwell Automation, Inc.  
Trademarks not belonging to Rockwell Automation are property of their respective companies.

**[www.rockwellautomation.com](http://www.rockwellautomation.com)**

---

**Power, Control and Information Solutions Headquarters**

Americas: Rockwell Automation, 1201 South Second Street, Milwaukee, WI 53204-2496 USA, Tel: (1) 414.382.2000, Fax: (1) 414.382.4444

Europe/Middle East/Africa: Rockwell Automation NV, Pegasus Park, De Kleetlaan 12a, 1831 Diegem, Belgium, Tel: (32) 2 663 0600, Fax: (32) 2 663 0640

Asia Pacific: Rockwell Automation, Level 14, Core F, Cyberport 3, 100 Cyberport Road, Hong Kong, Tel: (852) 2887 4788, Fax: (852) 2508 1846