

## >> Data Modeling Tool for Process Systems

PlantPAx™ ModelBuilder from Rockwell Automation is a data modeling tool that predicts real-time process and product conditions critical to peak performance. Using Soft Sensor models, the tool measures variables that are difficult to accurately or cost-effectively monitor by physical devices.



These online predictive models supplement complex analyzers or traditional laboratory measurements and can keep production on track by supplying feedback in minutes rather than hours. This fast time-to-value decreases off-spec production and raw material waste by identifying process errors before they occur.

The PlantPAx ModelBuilder system is suited for process industries with highly variable product or feed-stream quality. This includes processes that continuously operate against a single constraint, and produce the same product with the same feed at the same production rate.

**PlantPAx Process Automation System**  
[www.rockwellautomation.com/go/prps](http://www.rockwellautomation.com/go/prps)

## >> Weigh Feeder Control Module

Encompass™ Product Partner Hardy Process Solutions offers the HI 1769-FC weigh feeder control module. It mounts directly into an Allen-Bradley® MicroLogix™ 1500 or CompactLogix™ chassis and supports AOP setup to facilitate installation and programming.

The module can be used in new feeder control applications. It can retrofit inaccurate volumetric feeders and can replace outdated controllers in gravimetric systems. The single-scale module works with the PLC rack I/O to control many devices such as augers, vibratory and belt-based feeders and proprietary feeder designs.

This rate controller features true five-point automatic rate calibration; automatic feeder refill; and various alarms, including rate tolerance and disturbance using the PLC's rack I/O.

The module includes the company's WAVERSAVER® technology to eliminate the effects of surrounding vibration for fast, stable weight display and INTEGRATED TECHNICIAN® for system diagnostics and troubleshooting.

**Hardy Process Solutions**  
[www.rockwellautomation.com/go/p-hardy](http://www.rockwellautomation.com/go/p-hardy)



## >> Product Spotlight

### Three-Phase Power Quality Analyzers

Encompass™ Product Partner Fluke Corp. introduces the Fluke 430 Series II three-phase power quality analyzers. They are the first tools to use a patented algorithm to measure energy waste and quantify the cost of that waste.

The series II is designed to help plants reduce electrical power consumption and improve the performance of electromechanical equipment by providing the ROI justification to mitigate power quality distortion. The series will be available in January 2012.

The updated models feature three new measurement functions and hardware, software and firmware improvements. They have up to 32 GB (8 GB standard) memory and USB connectivity for longer power and energy logging and faster data download.

Both models are fully compliant with the IEC 61000-4-30 Class-A standard. They can monitor systems with up to 10 power quality parameters on one screen and can record up to 150 parameters on four phases simultaneously, in accordance with the EN50160 standard, and are safety rated 600 V CAT IV/1000 V CAT III.

The patented Unified Power function marks the first time any test tool has been able to automatically quantify the energy wasted by harmonics and unbalance. The Inverter Efficiency function simultaneously measures the input and output power of inverters in solar systems, wind turbines and uninterrupted power supplies, allowing the operator to see how much electricity the inverter itself is consuming and whether it is operating efficiently.

The 435 model includes PowerWave, a "fast-capture" system that displays waveforms and half-cycle RMS voltage and current values in detail so operators can measure the interaction during switching operations. This allows electricians, electrical contractors and generator suppliers to gather measurements with one tool for load profiling.

**Fluke Corp.**  
[www.rockwellautomation.com/go/p-fluke](http://www.rockwellautomation.com/go/p-fluke)



# PRODUCT FOCUS

## >> CAN Communicator

Encompass™ Product Partner HMS Industrial Networks offers the Anybus® Communicator CAN™, which enables communication between any industrial device with a CAN interface and a chosen industrial network.



Following the product's initial release in July, which offered connectivity to five networks, the company now offers a complete solution for 11 major fieldbus and industrial Ethernet networks, including ControlNet, DeviceNet and EtherNet/IP.

The product allows system integrators and network designers to connect CAN-enabled devices to a higher-level network. Typical devices include frequency drives, sensors, actuators, HMI's, bar code readers, RFID readers, weigh scales and more.

Any device with a CAN 2.0 A- or B-based protocol can be connected without any hardware or software changes to the CAN devices. This allows automation devices, even those with slower CAN communication, to be integrated into high-speed fieldbus/Ethernet networks without any restrictions to the upper network.

**HMS Industrial Networks Inc.**

[www.rockwellautomation.com/go/p-hms](http://www.rockwellautomation.com/go/p-hms)

## >> Data Access Port

Encompass™ Product Partner Panduit Corp. introduces the IndustrialNet Data Access Port as a safe and secure means to maintain and monitor the performance of control panels, PLCs, VFD, HMI, Stratix switch and industrial networks. It eliminates electrical hazards that can occur when opening an energized panel, promoting overall safety. Panduit's data access port offers the ability to access networked devices within the enclosure.



The modular design is compatible with RJ45 jacks, USB ports, and other modular connectors that can be interchanged and customized for design flexibility. An aluminum-cast base with clear plastic impact-resistant cover and snap-on faceplate mount meets UL type 4X NEMA 4X, IP65 rating.

The access port can also be locked with Panduit lockout/tagout products or padlocks to prevent tampering or unauthorized access to network devices.

**Panduit Corp.**

[www.rockwellautomation.com/go/p-panduit](http://www.rockwellautomation.com/go/p-panduit)

## >> Product Spotlight

### Turbomachinery Control Packages

Three new turbomachinery control (TMC) packages from Rockwell Automation incorporate standard, commercial, off-the-shelf control and visualization technology for fast installation and troubleshooting. Solutions for one- and two-valve steam turbines and single-stage compressors all are preconfigured with TMC control algorithms, and offer communication and diagnostic capabilities for improved uptime.

Alarm-management capabilities allow operators to identify specific hardware and sequencing failures to solve downtime challenges quickly. In addition, each TMC package integrates into existing control infrastructures for easier expansion with fewer control components.

The single-valve steam turbine governor currently is available and has a standard PAC and graphical interface to provide comprehensive diagnostics and trending capabilities. The recently released single-stage compressor controller is equipped with a dynamic

compressor performance map and full graphical interface with comprehensive diagnostics and trending capabilities.

The two-valve steam turbine governor solution is in development and will be released soon. This enhanced offering has all the features of the single-valve governor and adds extraction control, auxiliary PID and generator-load-control capabilities.

**Rockwell Automation  
Turbomachinery Control  
Solutions**

[www.rockwellautomation.com/go/lvprotection](http://www.rockwellautomation.com/go/lvprotection)



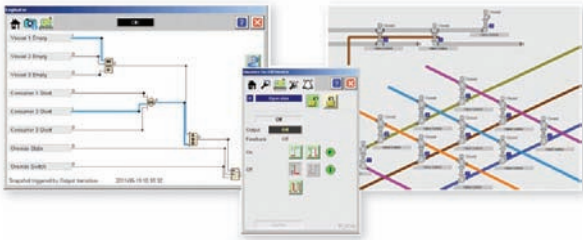
## >> PlantPAx System Engineering Tools

The PlantPAx™ Process Library 2.0 from Rockwell Automation consists of add-on instructions and faceplates for the most commonly used process devices to make configuration and visualization easier. The tools simplify engineering and make runtime diagnostic and troubleshooting capabilities more robust.

The latest additions to the PlantPAx library feature steam tables, pressure/temperature compensators and objects for Allen-Bradley® CompactLogix™ controllers, and Allen-Bradley PanelView™ Plus operator terminals.

### PlantPAx Process Automation System

[www.rockwellautomation.com/go/prps](http://www.rockwellautomation.com/go/prps)



## >> Compact Weigh Modules

The new WMC weigh modules from Encompass™ Product Partner Mettler-Toledo are designed to provide in-process control and embedded weighing for any critical instrument or system operation. These compact, 1-in.-wide weigh modules support single- or multi-sensor integration in precision weighing applications where installation space is a premium.

Its flexible integration in check-weighing and dispensing applications is ideal for laboratory and production environments. The sensor resolves 2 million divisions with highest precision and quick stabilization, according to the company.

### Mettler-Toledo, Inc.

[www.rockwellautomation.com/go/p-mettlertoledo](http://www.rockwellautomation.com/go/p-mettlertoledo)



## >> Redundant FOUNDATION Fieldbus Linking Device

The redundant FOUNDATION fieldbus linking device (EN2H1-R and CN2H1-R) from Rockwell Automation is an integrated solution for adding FOUNDATION fieldbus devices to the Logix Control Platform.

The device provides a direct link between fieldbus-enabled process instrumentation and an EtherNet/IP or ControlNet communication backbone. Engineering integration is seamless, and process variables of each field device appear without any required user logic. Additional PV status and diagnostic information is also available. FDT/DTM technology is supported, allowing direct access to the field device diagnostics and parameters using an FDT frame like FactoryTalk® AssetCentre software.

### FOUNDATION Fieldbus Linking Device

[www.rockwellautomation.com/go/tj10pr](http://www.rockwellautomation.com/go/tj10pr)

## >> Product Spotlight

### FactoryTalk VantagePoint Version 4.0 Software

Rockwell Automation has added significant enhancements to its FactoryTalk VantagePoint software to improve configuration and connectivity and expand its reporting environment. New out-of-the-box functionality, including pre-configured reporting content for vertical markets, helps reduce configuration time.

Other new features include improved Microsoft Excel add-in workflows, additional pre-built dashboards and trends, integration to FactoryTalk Metrics software, Report Expert reports, access to scheduled time-based reports, and the ability to import and export model components directly from FactoryTalk Transaction Manager software.

The FactoryTalk VantagePoint version 4.0 software includes tools that extend the application's connectivity and improve integration with Rockwell Automation data sources. It includes connectors to FactoryTalk Historian Machine Edition, FactoryTalk Metrics and Rockwell Software RSEnergyMetrix databases, and GE Proficy Historian connectors.

Operating system support also has been expanded to include Microsoft SQL server, Microsoft Windows 7, Microsoft Windows Server 2008 and VMware.

### FactoryTalk VantagePoint Version 4.0

<http://bit.ly/4RdRov>

AN ELECTRONIC SUBSCRIPTION TO  
**THE JOURNAL**  
IS 1 CLICK AWAY



It's that **easy** to get *The Journal!* We keep you up-to-date on industry trends, and help you increase productivity and profitability by getting the most from the technology and services offered by Rockwell Automation and its Encompass Partners and Solution Providers.

Get your e-subscription today!

Visit [www.ROCKWELLAUTOMATION.COM/go/tjsubscribe](http://www.ROCKWELLAUTOMATION.COM/go/tjsubscribe)

## >> Stainless Steel Gearboxes

Encompass™ Product Partner STOBBER Drives offers a stainless steel K series speed reducer (KSS) capable of withstanding harsh wash-down environments to meet stringent Food and Drug Administration (FDA) sanitation rules.

To meet FDA regulations, units are washed with steam cleaners at high pressure and with hot water. Harsh chemicals may be used to meet more extreme regulations. These severe cleaning procedures often compromise the paint on the gearbox, allowing for possible contamination of the product and gearbox.

The all-stainless steel reducer eliminates oxidation concerns that can compromise processes. Its IP69K certification means the KSS can tolerate extreme dust, contaminants, and high pressure washing and steam cleaning. It also withstands caustic solutions used for the most severe washdown applications.

**STOBBER Drives, Inc.**

[www.rockwellautomation.com/go/p-stober](http://www.rockwellautomation.com/go/p-stober)



## >> 3D Animation in Simulation Software

Rockwell Automation offers its Rockwell Software Arena simulation software v.14.0 that includes the new Visual Designer tool. It allows users to build 3D animation and dynamic business graphic dashboards in an intuitive drag-and-drop environment. The software is designed to help users better visualize simulation models and more effectively communicate the impact of process changes to operations and business management.

The Arena Visual Designer tool offers 3D animation capabilities similar to those used in personal gaming systems. Users can build realistic 3D animation quickly and easily within the application itself, or import content from popular 3D modeling programs such as Google SketchUp, AutoDesk or Blender for animated meshes. Users can use the drag-and-drop interface to create customized graphic dashboards for business presentations.

## >> Active Harmonic Filter

The Matrix PureSine active harmonic filter from Encompass™ Product Partner MTE Corp. is a filtering solution for coordinated variable load power factor correction (PFC) and harmonic mitigation. The device reduces total demand distortion to 5% while compensating up to the 51st harmonic and managing up to 12 different harmonic signatures simultaneously.

The PureSine includes programmable leading or lagging power factor correction and a full-time DSP Control system. A shunt connection helps ease maintenance. The PureSine comes standard in a wall mount configuration and supports 480V.

The modular system allows the user to right-size a system for present needs, while still having the option to increase capacity as current load increases. PureSine can supply a maximum of 960A correcting current. All modules are UL/cUL listed.

**MTE Corp.**

[www.rockwellautomation.com/go/p-mte](http://www.rockwellautomation.com/go/p-mte)



Arena simulation software v.14.0 can be purchased as a stand-alone software application of varying capability; a custom turnkey solution delivered by a team of Arena consultants; or as a package of software, training and consulting to support a breadth of applications.

**Arena Simulation Software**

[www.arenasimulation.com](http://www.arenasimulation.com)

# PRODUCT FOCUS

## >> Electromagnetic Flowmeter With EtherNet/IP Connectivity

Endress+Hauser introduces the Promag 53 electromagnetic flowmeter with EtherNet/IP connectivity for easy integration with the Rockwell Automation PlantPAx™ process automation system. The device measures electrically conductive liquids (> 5 μS/cm) and is ideal for applications in food and beverage, water and wastewater, and other process industries.

The flowmeter has an integrated Web server that allows users to remotely view flow data, conduct diagnostics, configure the flowmeter or perform process optimization. Data can be securely accessed by higher-level software such as ERP systems, process historians, control loop tuning programs and asset management systems. By using EtherNet/IP, up to 10 variables can be configured, including volume flow, calculated mass flow and totalized flow for remote access.

**Endress+Hauser and Rockwell Automation Strategic Alliance**  
[www.rockwellautomation.com/go/p-eh](http://www.rockwellautomation.com/go/p-eh)



## >> PowerFlex 755 AC Drives

Rockwell Automation has extended the power range of its Allen-Bradley® PowerFlex® 755 AC drives to 900 kW/1350 hp and added 600/690V ratings. The new drives are suited for heavy industrial applications, providing increased application flexibility and advanced diagnostics.

A common DC bus option allows users to connect the AC drive to a common DC-bus configuration, which takes advantage of different drive cycles to share energy. Managing energy from a shared source increases overall system performance and reduces losses.

This latest frame size includes an embedded Ethernet port and five option slots so users can tailor it to their application. Option modules include I/O, feedback, safety, additional communications and an auxiliary power supply. A roll-out design allows easy access to the drive for fast installation and maintenance.

**PowerFlex 755 AC Drives**  
[www.rockwellautomation.com/go/tjpf755](http://www.rockwellautomation.com/go/tjpf755)



## ADVERTISERS INDEX

Company	Web Address	Page
Advanced Micro Controls Inc. (AMCI)	<a href="http://www.rockwellautomation.com/go/p-amci">www.rockwellautomation.com/go/p-amci</a>	43
Ametek Automation & Process Technologies	<a href="http://www.rockwellautomation.com/go/p-ametek">www.rockwellautomation.com/go/p-ametek</a>	16
Apex Dynamics	<a href="http://www.rockwellautomation.com/go/p-apex">www.rockwellautomation.com/go/p-apex</a>	9
Applied Control Technology Inc.	<a href="http://www.rockwellautomation.com/go/p-act">www.rockwellautomation.com/go/p-act</a>	44
Control Station, Inc.	<a href="http://www.rockwellautomation.com/go/p-controlstation">www.rockwellautomation.com/go/p-controlstation</a>	44
Datalogic	<a href="http://www.rockwellautomation.com/go/p-datalogic">www.rockwellautomation.com/go/p-datalogic</a>	44
EPLAN Software & Service	<a href="http://www.rockwellautomation.com/go/p-eplan">www.rockwellautomation.com/go/p-eplan</a>	44
Grace Engineered Products	<a href="http://www.rockwellautomation.com/go/p-grace">www.rockwellautomation.com/go/p-grace</a>	3
Helm Instrument Co. Inc.	<a href="http://www.rockwellautomation.com/go/p-helm">www.rockwellautomation.com/go/p-helm</a>	43
HMS Industrial Networks Inc.	<a href="http://www.rockwellautomation.com/go/p-hms">www.rockwellautomation.com/go/p-hms</a>	26, 43
Hubbell Electrical System	<a href="http://www.rockwellautomation.com/go/p-hubbell">www.rockwellautomation.com/go/p-hubbell</a>	44
item North America	<a href="http://www.rockwellautomation.com/go/p-itemna">www.rockwellautomation.com/go/p-itemna</a>	37
Molex-Woodhead Software & Electronics	<a href="http://www.rockwellautomation.com/go/p-molex">www.rockwellautomation.com/go/p-molex</a>	12, 43
MTE Corp.	<a href="http://www.rockwellautomation.com/go/p-mte">www.rockwellautomation.com/go/p-mte</a>	33
Online Development Inc.	<a href="http://www.rockwellautomation.com/go/p-odi">www.rockwellautomation.com/go/p-odi</a>	11
Phoenix Digital Corp.	<a href="http://www.rockwellautomation.com/go/p-phoenixdigital">www.rockwellautomation.com/go/p-phoenixdigital</a>	28
ProSoft Technology, Inc.	<a href="http://www.rockwellautomation.com/go/p-prosoft">www.rockwellautomation.com/go/p-prosoft</a>	52
Rockwell Automation Solution Partner Program	<a href="http://www.rockwellautomation.com/go/sitj">www.rockwellautomation.com/go/sitj</a>	13
Rockwell Automation Machine Builders Partner Program	<a href="http://www.rockwellautomation.com/go/tjpartnersoem">www.rockwellautomation.com/go/tjpartnersoem</a>	38
Rockwell Automation Process Solutions	<a href="http://www.rockwellautomation.com/go/tj10pr">www.rockwellautomation.com/go/tj10pr</a>	51
Roxtec Inc.	<a href="http://www.rockwellautomation.com/go/p-roxtec">www.rockwellautomation.com/go/p-roxtec</a>	17
Spectrum Controls	<a href="http://www.rockwellautomation.com/go/p-spectrumcontrols">www.rockwellautomation.com/go/p-spectrumcontrols</a>	6
SyTech Inc.	<a href="http://www.rockwellautomation.com/go/p-sytech">www.rockwellautomation.com/go/p-sytech</a>	43
Thomas & Betts Corp.	<a href="http://www.rockwellautomation.com/go/p-thomasbetts">www.rockwellautomation.com/go/p-thomasbetts</a>	43
WITTENSTEIN	<a href="http://www.rockwellautomation.com/go/p-wittenstein">www.rockwellautomation.com/go/p-wittenstein</a>	2