



## >> Gearbox with Hollow Shaft Option

Rockwell Automation Encompass™ Product Partner Wittenstein recently added the modularity concept to the alpha LP+ gearbox by creating a gear reducer with a hollow shaft option. The alpha LPH -, Wittenstein's hollow-shaft gearbox, is specially designed and tested for belt actuators. This product modification carries similar technical specifications to the regular alpha LP+ product line.

Wittenstein, Inc.

[www.rockwellautomation.com/go/p-wittenstein](http://www.rockwellautomation.com/go/p-wittenstein)

## >> Product Database Added to Integrated Architecture Builder

Encompass™ Product Partner HMS Industrial Networks' product database has recently been added to Integrated Architecture Builder (IAB) from Rockwell Automation. IAB is a software tool for configuring Logix-based control systems with NetLinx-based networks such as DeviceNet, ControlNet and EtherNet/IP. It helps select equipment and generate bills of materials and documentation for automation projects.

HMS offers a family of gateway products designed for use in industrial plants where many different networks are used. HMS now can be selected and added to an IAB system configuration, listed on the Bill of Materials, and included in the project report.

HMS Industrial Networks Inc.

[www.rockwellautomation.com/go/p-hms](http://www.rockwellautomation.com/go/p-hms)

## >> Product Spotlight

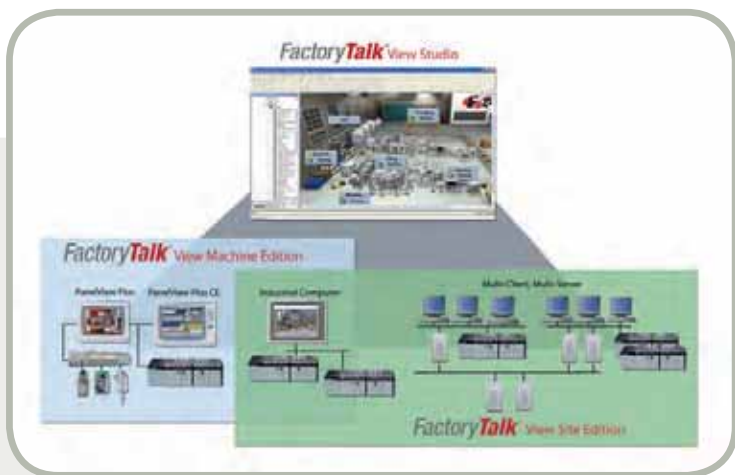
### Visualization Software

Rockwell Automation has released the latest version of its FactoryTalk® View visualization software for machine-level and site-level HMI solutions. The FactoryTalk View Machine Edition (ME) and FactoryTalk View Site Edition (SE) version 5.1 software, along with FactoryTalk ViewPoint software, are designed to provide easy, remote monitoring of manufacturing processes from an Internet browser. They include several enhancements that help reduce visualization solution implementation time for engineers.

Users can maximize the benefits of the software by implementing it with the Rockwell Automation Logix Control Platform and Allen-Bradley® PanelView™ Plus visualization solutions.

Both FactoryTalk View ME and FactoryTalk View SE visualization software now include updated operating system support for Windows XP Service Pack 3, Windows Vista Business Edition and Windows Server 2008. The updated version of FactoryTalk View ME software also adds support for Windows Vista Home Basic.

A new application documenter, installed with both the FactoryTalk View ME and FactoryTalk View SE software, provides comprehensive documentation of HMI applications. This helps



reduce the time necessary to manually create documentation. The documenter also shows where HMI tags and direct tag references are used throughout the application, and provides the ability to export the application documentation to an HTML format.

The updated software includes faceplates for the new Advanced Process Control (APC) instructions introduced in v.17 of the Rockwell Software® RSLogix™ 5000 software. These new function blocks provide a solution for long dead-time processes and multivariable control with built-in automatic tuning. The faceplates also provide pre-built visualization and operator interaction, saving development time and making it easier to implement APC with the Rockwell Automation Integrated Architecture™ system.

Rockwell Automation FactoryTalk View

[www.rockwellautomation.com/go/tjviewse](http://www.rockwellautomation.com/go/tjviewse)



## >> Product Spotlight

### AC Drive for Motor Control

The new Allen-Bradley® PowerFlex® 753 AC drive from Rockwell Automation provides machine builders and manufacturers with versatile motor control for general-purpose applications. The drive supports multiple languages and complies with global standards and certifications. The second release in the PowerFlex 750 series, the PowerFlex 753 drive is suited for many industries and applications, including fans, pumps and conveyors.

The drive has embedded I/O and Allen-Bradley DeviceLogix™ control technology. It is available in power ranges from 0.75 to 250 kW or 1 to 350 hp at 400/480V AC and 540/650V DC input.

The PowerFlex 753 AC drive offers many control hardware options. The DeviceLogix control technology helps meet requirements for stand-alone applications by giving users control flexibility to combine inputs and/or outputs, as well as local logic functions, to determine the drive's behavior.

Users can configure the drive to provide advanced notification of operating data on cooling fans, I/O relay cycles, motor run-time hours and potential fault warnings. Additionally, Embedded Safe Torque-Off and Safe-Speed Monitoring options help customers reduce overall system costs while helping to protect personnel and equipment.

**Allen-Bradley PowerFlex 755 AC Drive**

[www.rockwellautomation.com/go/tjpf755](http://www.rockwellautomation.com/go/tjpf755)

## >> Intelligent Cellular Gateways

Rockwell Automation Encompass™ Product Partner ProSoft Technology recently released RadioLinx® Intelligent Cellular solutions, designed to provide wide area and even global wireless connectivity for industrial devices. Intelligent Cellular Gateways use existing cellular infrastructure to connect devices across geographically diverse locations. The gateways also can be used to connect devices through the Internet to one or more locations.

Intelligent Cellular solutions combine robust industrial cellular technology, industrial protocol templates, and ALEOST™ persistent-connection management. ALEOS enables real-time device status and health including network connectivity, throughput and signal strength. The ACEmanager™ utility enables local or over-the-air device configuration and diagnostics. Integration is made easy with downloadable configuration templates that support various industrial protocols such as DF1, and can be customized to support others.

The Intelligent Cellular solutions offer a compact form factor, low power consumption, DIN-rail mount and a rugged design that supports industrial operating temperatures and Class I Div 2 hazardous location certification.

**ProSoft Technology**

[www.rockwellautomation.com/go/p-prosoft](http://www.rockwellautomation.com/go/p-prosoft)



## >> Weight Controller With Network Interface

Only three inches deep, the HI 4050 general-purpose weight controller from Rockwell Automation Encompass™ Product Partner Hardy Instruments is now available with a ControlNet network interface. ControlNet allows fast transfer of time-critical application information at 5 Mbit/sec in a redundant, deterministic and predictable manner. Information can be transmitted to up to 98 additional nodes at distances of 250 meters to 5,000 meters. The interface comes with two BNC converters for cable redundancy.

The controller includes WAVERSAVER® to eliminate the effects of surrounding vibration for fast, stable weight display, C2® electronic calibration without test weights, a Secure Digital (SD) based Secure Memory Module card for fast transfer of configuration data, and INTEGRATED TECHNICIAN (IT®) for system diagnostics and troubleshooting.

It comes standard with Ethernet, and optional DeviceNet, ControlNet, EtherNet/IP, Allen-Bradley® Remote I/O, or Analog and other networks.

**Hardy Instruments**

[www.rockwellautomation.com/go/p-hardy](http://www.rockwellautomation.com/go/p-hardy)



## ADVERTISERS INDEX

Company	Web Address	Product	Page
Advanced Micro Controls	<a href="http://www.amci.com">www.amci.com</a>	Industrial Controls	25, 43
Apex Dynamics	<a href="http://www.apexdynamics.com">www.apexdynamics.com</a>	Gear Boxes	9, 43
FLIR Systems	<a href="http://www.flir.com">www.flir.com</a>	Infrared Vision Systems	13, 43
Grace Engineered Products	<a href="http://www.grace-eng.com">www.grace-eng.com</a>	GradePort R Series	3, 44
EPLAN Software & Services LLC	<a href="http://www.eplan.us">www.eplan.us</a>	Electrical Design CAD Software	44
item North America	<a href="http://www.itemamerica.com">www.itemamerica.com</a>	Structures	32
Matrikon Inc.	<a href="http://www.matrikon.com">www.matrikon.com</a>	Software – Remote Alarm Notification	19
Online Development Inc.	<a href="http://www.oldi.com">www.oldi.com</a>	Enterprise Transaction Modules	15
Phoenix Digital Corp.	<a href="http://www.phoenixdigital.com">www.phoenixdigital.com</a>	Optical Communications Modules	10
ProSoft Technology, Inc.	<a href="http://www.prosoft-technology.com">www.prosoft-technology.com</a>	Communication Modules	52, 44
Rockwell Automation	<a href="http://www.rockwellautomation.com/go/sitj">www.rockwellautomation.com/go/sitj</a>	Solution Provider Program	18
Rockwell Automation	<a href="http://www.rockwellautomation.com/go/tjguardlogix">www.rockwellautomation.com/go/tjguardlogix</a>	GuardLogix Controllers	51
Rockwell Automation	<a href="http://www.rockwellautomation.com/go/tjenergy">www.rockwellautomation.com/go/tjenergy</a>	Sustainable Energy Program	23
Roxtec Inc.	<a href="http://www.roxtec.com">www.roxtec.com</a>	Cable Entry Seals	43
Salem Automation Inc.	<a href="http://www.salemautomation.com">www.salemautomation.com</a>	Software – Drivers	43
SchenckAccuRate	<a href="http://www.accuratefeeders.com">www.accuratefeeders.com</a>	Bulk Solids Metering	47, 43
Secure Crossing	<a href="http://www.securecrossing.com">www.securecrossing.com</a>	Network Security	11
Service Wire	<a href="http://www.servicewire.com">www.servicewire.com</a>	Specialty Cables	32
Spectrum Controls	<a href="http://www.spectrumcontrols">www.spectrumcontrols</a>	I/O Hart Modules	6
SyTech Inc	<a href="http://www.sytech.com">www.sytech.com</a>	XLReporter	44
Wittenstein	<a href="http://www.wittenstein.com">www.wittenstein.com</a>	Gearheads	2, 44