

# ENCOMPASS SHOWCASE

## Burkert Mass Flow Controllers for Gases



Burkert's comprehensive line of Mass Flow Controllers (MFC) for gases includes the Type 8712, employing CMOSens® technology for responses four times faster than conventional MFCs, with an optional low-flow rate as low as 0.04 cm<sup>3</sup>N/min. Other Burkert MFCs include the Type 8626, with a low flow rate ranging from 25-1500 l N/min. This permits a constant gas flow or flow following a pre-defined set-point profile; compatible with ammonia gas.

For more information, call (949) 223-3100 or visit [www.burkert-usa.com](http://www.burkert-usa.com).

**BURKERT FLUID CONTROL SYSTEMS**

## Harmonic Mitigation Filters

Your goal is to have an efficient application that you don't have to worry about every day. TCI offers the products that will help you achieve your goal. The HG7 HarmonicGuard® Series Filter limits current distortion to less than 7 percent TDD and improves true power factor. This helps ensure an efficient system and a happy customer. To learn more, visit [www.transcoil.com](http://www.transcoil.com).



**TCI LLC**

## Excel Reporting for Production and Management

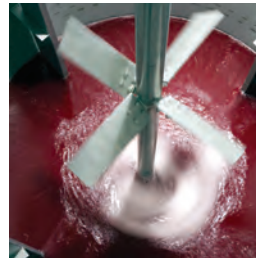


Finally, a reporting solution that gives the information you need, in the form you want, with absolutely no programming. XLReporter turns raw process data into a polished report in worksheets, Web pages or e-mail. If you are looking to combine the best of Microsoft Excel with a product that has industrial robustness, fast data access, integrated tag browsing and first-class support, then this product is for you!

The product is compatible with RSLinx®, RSView®, OPC Servers, OPC-HDA Servers, ODBC-compliant databases and much more. For more information, call us at (508) 520-9957 or download your free evaluation copy from our Web site at [www.TheReportCompany.com](http://www.TheReportCompany.com).

**SYTECH**

## Free Weighing System White Paper



Five main factors can affect your weighing system's accuracy and performance, including load cell accuracy, load factors, environmental forces, interference with signal transmission, and system components suited to your specific weighing application. In this paper, Hardy Instruments, the leading expert in process weighing

technology, provides advice on selecting, installing and operating your weighing system for maximum efficiency. Download your FREE white paper at [www.hardyinstruments.com/accuracy](http://www.hardyinstruments.com/accuracy), or call (800) 821-5831/ (858) 278-2900, x2040 for more information.

**HARDY INSTRUMENTS**

## Video Historian



The Longwatch Video Historian enables users to acquire and store video clips linked with process and manufacturing variables such as time of day, camera number, batch step, machine ID and other

control-system tags. Much like a process historian that stores information about processes, the Video Historian archives video that documents procedures in batch applications, provides visual proof of regulatory compliance, monitors machinery, observes operator actions, and helps improve quality, reduce downtime and avoid costly losses. For more information, call (877) LONGWATCH or visit [www.longwatch.com](http://www.longwatch.com).

**LONGWATCH**

## Gear Motor Systems Solutions



Wittenstein's TPM+ is the successor to the gear motor by Rockwell Automation. With more ratios, improved dynamic performance and factory programmed with Kinetix® motion control data files, this product is a mechanical drop-in replacement for the Rockwell Automation MPG. Compact and

powerful, this product packs a real punch. Call (888) 534-1222 or visit [www.wittenstein-us.com](http://www.wittenstein-us.com).

**WITTENSTEIN INC.**

# ENCOMPASS SHOWCASE

## Communications Software

The ABNet interface software from Salem Automation Inc. offers connectivity from VAX VMS, Alpha Open VMS and Integrity Open VMS servers to supported Allen-Bradley® PLCs including PLC 5/20E, 40E, 80E, SLC 5/05, ControlLogix® and CompactLogix™. ABNet also supports ControlLogix DHRIO gateway to SLC 5/04 and PLC 5 on Data Highway PLUS. ABNet offers support for the Integrity Itanium platform, latest versions of OpenVMS and for tag-based addressing of the CompactLogix/ControlLogix processors. For more information, call (336) 661-0890 or visit [www.SalemAutomation.com/ABNet.htm](http://www.SalemAutomation.com/ABNet.htm).



**SALEM AUTOMATION INC.**

## Single-Channel Weigh Scale Module

This single-channel weigh scale module features strain gage signal conditioning, built-in tare, and programmable gain and calibration functions. It is available in 16 bit 1 millisecond update (10,000 count full-scale), and 20 bit 200 millisecond update (100,000 count full-scale) versions. Applications for the HM-1734 module include batching, filling, process/ bulk weighing and level control. Helm also manufactures strain gage modules for the 1746, 1756 and 1769 I/O platforms. For more information, call (419) 893-4356 or visit [www.helminstrument.com](http://www.helminstrument.com).



**HELM INSTRUMENT CO, INC.**

## SlotServer – ControlLogix Interface to Fire Alarm Control Panels



Process systems often need to interface the plant's building automation systems and fire alarm control panels (FACP) via the ControlLogix® platform. Fire alarm panels tend to utilize proprietary protocols. FieldServer has the complete library of fire alarm panel protocols enabling ControlLogix interface to fire alarm panel systems. For more information, call (408) 262-2299 or (888) 509-1970, e-mail [sales@fieldserver.com](mailto:sales@fieldserver.com), or visit [www.fieldserver.com/rockwell](http://www.fieldserver.com/rockwell).

**FIELDSEVER TECHNOLOGIES**

## Replacement Motors

Elwood High Performance Motors announces the release of the Elwood H-Series motors as drop-in replacements for Rockwell Automation H, S, W and 1326AS motors featuring original equipment components and connectivity. Elwood's H-Series motors accept original data files, tuning, cables, couplers and adapters. Additionally, Elwood continues to supply explosion proof servomotors; look for them in Motion Analyzer release 4.7. As with all Elwood products, rebuilds and replacement parts are available. For more information visit [www.elwood.com/gettys\\_rockwell.shtml](http://www.elwood.com/gettys_rockwell.shtml) or call (262) 637-6591.



**ELWOOD HIGH PERFORMANCE MOTORS**

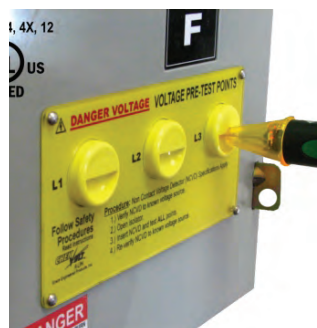
## Helical Planetary Gearbox

The in-line and right-angle Apex Compact AD/ADR series product provides the ultimate solution where positioning under load is necessary and space is tight. The Ultra Stiff patented design is available in multiple ratios (4, 5, 7 and 10:1) and also includes many double-stage reductions (including the odd ratios of 21, 31, 61 and 91:1). It's available in seven sizes, ranging from the exclusive 47 mm through the larger 255 mm that will plug-and-play for comparable designs on the market today — save up to 30%. The precision helical design has an efficiency of 97%+ and is available in three precision classes (as low as 1 arc-minute), with a five-year warranty and 100% on-time delivery. Call (631) 244-9040 or visit [www.apexdyna.com](http://www.apexdyna.com).



**APEX DYNAMICS USA**

## Noncontact Voltage Portal



Reduce arc flash risk! How? Grace Engineered Products, maker of GracePorts, is introducing ChekVolt, the company's newest innovation. ChekVolt is a noncontact voltage portal that allows electrical isolation to be preverified through the door with any voltage-detector pen. Find voltage before it finds you! Visit [www.graceport.com](http://www.graceport.com) to learn more!

**GRACE ENGINEERED PRODUCTS**