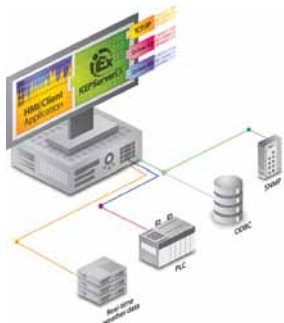


ENCOMPASS SHOWCASE

OPC Communication Solution



KEPServerEX is the world's leading OPC communication solution and allows you to truly maximize the promise of OPC. An architecture supporting protocol "plug-ins" in a single OPC server delivers performance, quality and reliability unmatched in the industry. The list of drivers includes PLC and device drivers, database- and application-specific drivers, and a user-configurable driver. Kepware's OPC server technology has been used with Rockwell Software® products since 1998, and Kepware has a stellar record of supporting the Rockwell Automation channel. For more information call (207) 775-1660 or visit www.kepware.com/Products/Encompass.html.

For more information call (207) 775-1660 or visit www.kepware.com/Products/Encompass.html.

KEPWARE TECHNOLOGIES

Video Historian



The Longwatch Video Historian enables users to acquire and store video clips linked with process and manufacturing variables such as time of day, camera number, batch step, machine ID and other

control-system tags. Much like a process historian that stores information about processes, the Video Historian archives video that documents procedures in batch applications, provides visual proof of regulatory compliance, monitors machinery, observes operator actions, and helps improve quality, reduce downtime and avoid costly losses. For more information, call (877) LONGWATCH or visit www.longwatch.com.

LONGWATCH

Single-Channel Weigh Scale Module

This single-channel weigh scale module features strain gage signal conditioning, built-in tare, and programmable gain and calibration functions.

It is available in 16 bit 1 millisecond update (10,000 count full-scale), and 20 bit 200 millisecond update (100,000 count full-scale) versions. Applications for the HM-1734 module include batching, filling, process/ bulk weighing and level control. Helm also manufactures strain gage modules for the 1746, 1756 and 1769 I/O platforms. For more information, call (419) 893-4356 or visit www.helminstrument.com.



HELM INSTRUMENT CO, INC.

Remote Process Actuation and Control System

Burkert's AirLINE Type 8644 remote process actuation and control system now is compatible with the Rockwell Automation POINT I/O™ system. Offering on/off and continuous valve functionality, AirLINE incorporates up to 13 modules (maximum 64 valves). DeviceNet™-supported Fieldbus interface is included in the packaged solution. The system's high-performance solenoid pilot valves allow a 300 l/min flow rate. The valves employ Burkert's rocker technology (enables fast response, high cycle life, high pressure capability, low power consumption). Call (800) 325-1405 or visit www.burkert-usa.com.



BURKERT FLUID CONTROL SYSTEMS

Attention Rockwell Automation Encompass Product Partners!



You enjoy exclusive advertising opportunities in The Journal to promote your products. Take advantage of this opportunity to showcase your products that complement Rockwell Automation solutions. Encompass Product Partner Showcase ads are cost-effective, 1/6-page, four-color ads — produced for you at no additional charge. For more information, contact Scott Walters at

(440) 835-2545, swalters@putman.net or Skype [s_m_walters](https://www.skype.com/user/s_m_walters).

THE JOURNAL

Noncontact Voltage Portal



Reduce arc flash risk! How? Grace Engineered Products, maker of GracePorts, is introducing ChekVolt, the company's newest innovation. ChekVolt is a noncontact voltage portal that allows electrical isolation to be preverified through the door with any voltage-detector pen. Find voltage before it finds you! Visit www.graceport.com to learn more!

GRACE ENGINEERED PRODUCTS

ENCOMPASS SHOWCASE

Excel Reporting for Production and Management



Finally, a reporting solution that gives the information you need, in the form you want, with absolutely no programming. XLReporter turns raw process data into a polished report in worksheets, Web pages or e-mail. If you are looking to combine the best of Microsoft Excel with a product that has industrial robustness, fast data access, integrated tag browsing and first-class support, then this product is for you!

The product is compatible with RSLinx®, RSView®, OPC Servers, OPC-HDA Servers, ODBC-compliant databases and much more. For more information, call us at (508) 520-9957 or download your free evaluation copy from our Web site at www.TheReportCompany.com.

SYTECH

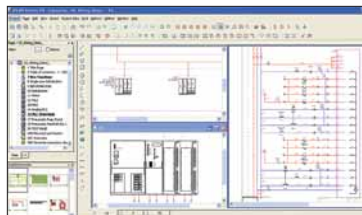
Helical Planetary Gearbox

The in-line and right-angle Apex Compact AD/ADR series product provides the ultimate solution where positioning under load is necessary and space is tight. The Ultra Stiff patented design is available in multiple ratios (4, 5, 7 and 10:1) and also includes many double-stage reductions (including the odd ratios of 21, 31, 61 and 91:1). It's available in seven sizes, ranging from the exclusive 47 mm through the larger 255 mm that will plug-and-play for comparable designs on the market today — save up to 30%. The precision helical design has an efficiency of 97%+ and is available in three precision classes (as low as 1 arc-minute), with a five-year warranty and 100% on-time delivery. Call (631) 244-9040 or visit www.apexdyna.com.



APEX DYNAMICS USA

Electrical CAD/CAE Software



Design and document your controls hardware systems efficiently and accurately with EPLAN Electric P8. Automatic functions such as online cross-referencing, device tagging, wire numbering, and project reports that match

schematics 1:1 significantly reduce design time and eliminate errors associated with manual tasks. Advanced capabilities such as EPLAN macros with variants, project options and automatic JIC/IEC standards conversion provide further productivity gains. For more information and to try EPLAN free for 30 days, visit www.eplanusa.com.

EPLAN SOFTWARE & SERVICES

ControlLogix™ Weigh Scale Modules

Hardy's single-scale and dual-scale HI 1756 weigh scale modules read weight and diagnostic data from one or two scales and communicate it over the backplane to your ControlLogix™ controller. Both modules reduce installation time and system costs since no external wire to the PLC is needed. These modules include WAWERSAVER® to eliminate the effects of surrounding vibration for a fast, stable weight display, C2® electronic calibration without test weights, and INTEGRATED TECHNICIAN® (IT) for system diagnostics and troubleshooting. For more information, visit www.hardyinstruments.com/1756, or call (800) 821-5831 or (858) 278-2900.



HARDY INSTRUMENTS

SlotServer – ControlLogix Interface to Fire Alarm Control Panels

Process systems often need to interface the plant's building automation systems and fire alarm control panels (FACP) via the ControlLogix® platform. Fire alarm panels tend to utilize proprietary protocols. FieldServer has the complete library of fire alarm panel protocols enabling ControlLogix interface to fire alarm panel systems. For more information, call (408) 262-2299 or (888) 509-1970, e-mail sales@fieldserver.com, or visit www.fieldserver.com/rockwell.



FIELDSEVER TECHNOLOGIES

Gear Motor Systems Solutions



Wittenstein's TPM+ is the successor to the gear motor by Rockwell Automation. With more ratios, improved dynamic performance and factory programmed with Kinetix® motion control data files, this product is a mechanical drop-in replacement for the Rockwell Automation MPG. Compact and powerful, this product packs a real punch. Call (888) 534-1222 or visit www.wittenstein-us.com.

WITTENSTEIN INC.