

SOLUTION PROFILE

RS PMX™ MES 4.2

NEW CAPABILITIES

- ENHANCED IN-PROCESS CONTROL PROCEDURES
- TIGHTLY INTEGRATED WEIGH AND DISPENSE WITH ELECTRONIC WORK INSTRUCTIONS
- NEW EXTRACT, TRANSFER AND LOAD CAPABILITIES TO ARCHIVE AND EXCHANGE RS PMX DATA
- COMPLETE EQUIPMENT CONTROL WITHIN WORK INSTRUCTIONS
- ENHANCED BATCH REVIEW FUNCTIONALITY

STRONGER INTEGRATION,
GREATER VISIBILITY,
BETTER FLEXIBILITY

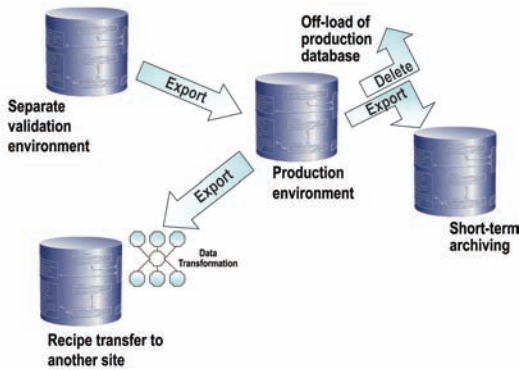


NEW MES SOLUTION LOWERS COST, ENHANCES CAPABILITIES

Looking for higher profit margins? Leaders in today's life sciences industry are looking long and hard at the next frontier of cost savings – internal production processes. They are aggressively squeezing costs from inefficient operations, by developing leaner, faster, better manufacturing systems. Manufacturing systems designed with regulatory compliance in mind. The key is integrated information and production visibility, and Rockwell Automation's RS PMX™ MES 4.2 provides the tools to accomplish it.

RS PMX™ MES 4.2

The RS PMX™ MES 4.2 package simplifies integration of information across your enterprise, helping you improve your operations for greater competitive advantage. Stronger process control can reduce waste – while increasing manufacturing flexibility. RS PMX™ MES 4.2 tightly integrates weigh and dispense operations with electronic work instructions, delivering more functionality in an easy-to-use environment. Electronic batch records directly integrate with machinery, for real-time equipment status, selection and tracking capabilities, so you can review batches faster – by work instruction or by exception. Of course, like past versions, RS PMX™ MES 4.2 seamlessly shares information across your enterprise, helping you respond faster to market changes and customer demand.



NEW EXTRACT, TRANSFER AND LOAD CAPABILITIES TO ARCHIVE AND EXCHANGE RS PMX™ DATA

Speed up the recipe implementation time and lower the risks during the new recipe test phases

- Provides users with selective, configurable data transfers utilizing XML between different environments e.g. validation and production, even between different locations
- XML import/export of recipe structure and content
- Allows selection and management without any programming knowledge, directly from the graphical user interface

ENHANCED IN-PROCESS CONTROL PROCEDURES

Effective production control by complete integration of in-process control steps to work instructions

- Now supports calculations and product-specific parameter definitions for increased recipe flexibility
- Calculation abilities between IPC and electronic work instructions

TIGHTLY INTEGRATED WEIGH AND DISPENSE WITH ELECTRONIC WORK INSTRUCTIONS

Automated transfer of line dispensing information to the batch record

- Allows seamless line dispensing from electronic batch record
- Weigh report automatically inserted into electronic batch record annex
- Bind accounting and summary level information directly displayed in electronic batch record

COMPLETE EQUIPMENT CONTROL WITHIN WORK INSTRUCTIONS

Forced GMP compliance in regards to equipment handling

- Detailed equipment binding and status information captured in bill of equipment
- Select and bind equipment directly from electronic work instructions using real time equipment status

ENHANCED BATCH REVIEW FUNCTIONALITY

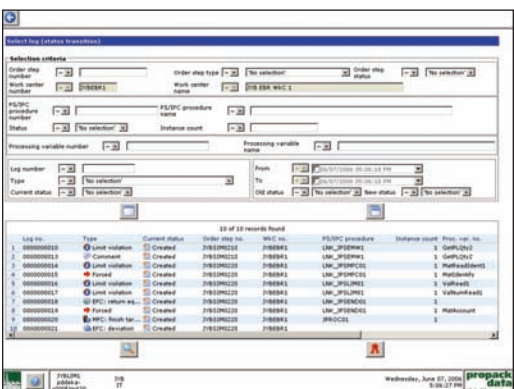
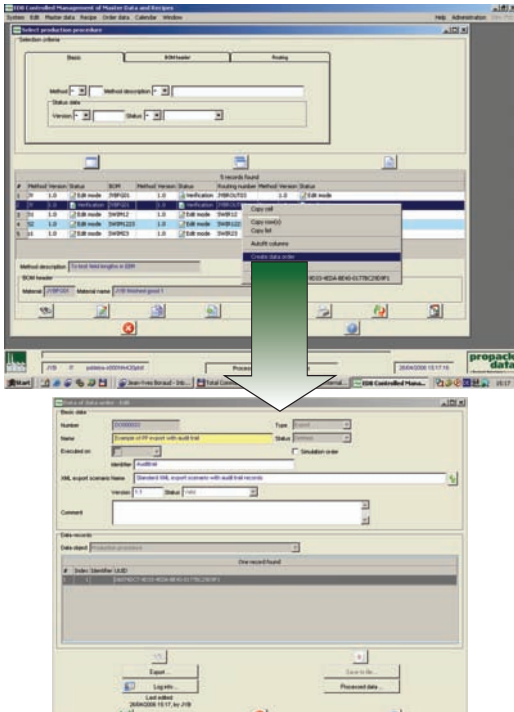
Review by exception could accelerate the review process by 80%

- New menu buttons allow for easy navigation from one work instruction to another
- Search criteria to filter deviations
- Review and manage all deviations from a list
- Ability to perform deviation review on-line

WHAT ELSE IS NEW IN RS PMX™ MES 4.2

Lower integration costs

- Allows smoother migration into future releases
- Supports Oracle Database Server 10G
- Supports MS Office 2003



www.rockwellautomation.com

Power, Control and Information Solutions Headquarters

Americas: Rockwell Automation, 1201 South Second Street, Milwaukee, WI 53204-2496 USA, Tel: (1) 414.382.2000, Fax: (1) 414.382.4444

Europe/Middle East/Africa: Rockwell Automation, Vorstlaan/Boulevard du Souverain 36, 1170 Brussels, Belgium, Tel: (32) 2 663 0600, Fax: (32) 2 663 0640

Asia Pacific: Rockwell Automation, Level 14, Core F, Cyberport 3, 100 Cyberport Road, Hong Kong, Tel: (852) 2887 4788, Fax: (852) 2508 1846